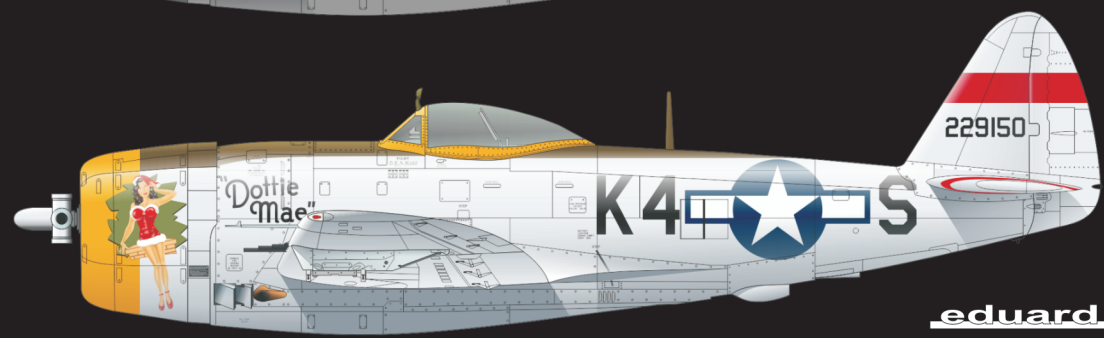
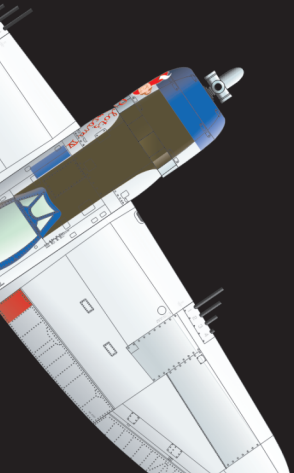
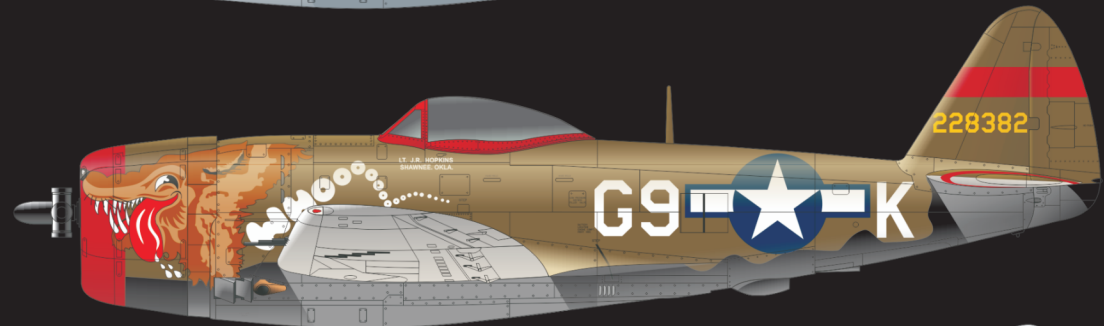
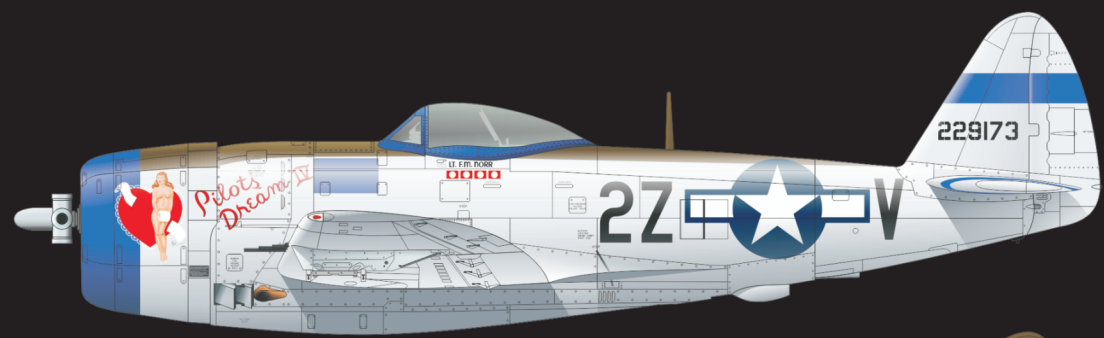




INSTRUCTION SHEET

**DOTTIE MAE P-47D**





Carefully read instruction sheet before assembling. When you use glue or paint, do not use near open flame and use in well ventilated room. Keep out of reach of small children. Children must not be allowed to suck any part, or pull vinyl bag over the head.



Před započítím stavby si pečlivě prostudujte stavební návod. Při používání barev a lepidla pracujte v dobře větrané místnosti. Lepidla ani barvy nepoužívejte v blízkosti otevřeného ohně. Model není určen malým dětem, mohlo by dojít k požití drobných dílů.

## INSTRUCTION SIGNS \* INSTR. SYMBOLS \* INSTRUKTION SINNBILDEN \* SYMBOLES \* 記号の説明



OPTIONAL  
VOLBA



BEND  
OHNOUT



OPEN HOLE  
VYVRTAT OTVOR



SYMMETRICAL ASSEMBLY  
SYMETRICKÁ MONTÁŽ



REMOVE  
ODŘÍZNOUT



REVERSE SIDE  
OTOČIT



APPLY EDUARD MASK  
AND PAINT  
POUŽÍT EDUARD MASK  
NABARVIT

## PARTS



## DÍLY



## TEILE

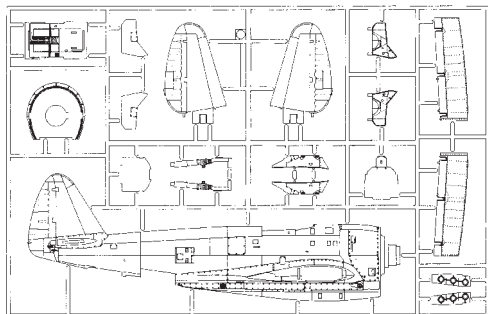


## PIÈCES



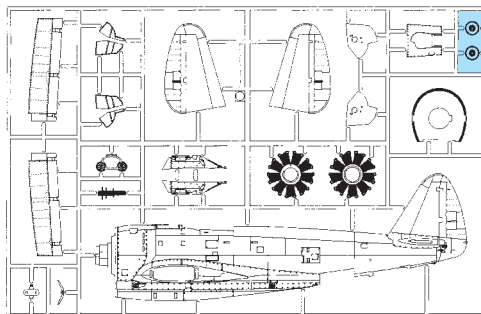
## 部品

A&gt;

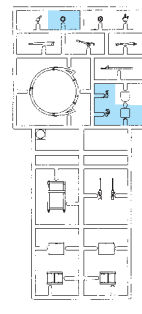


B&gt;

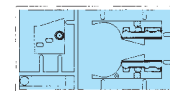
## PLASTIC PARTS



E&gt;



F&gt;



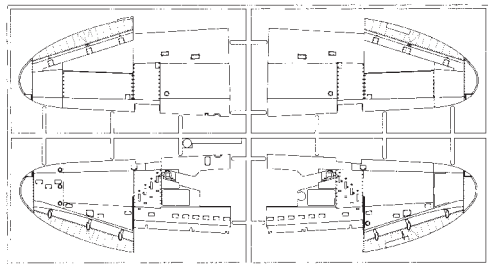
G&gt;



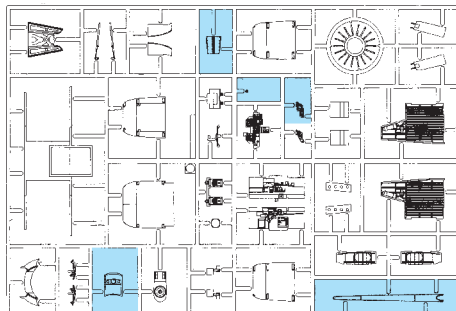
J&gt;



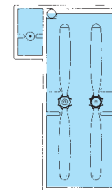
C&gt;



D&gt;



L&gt;



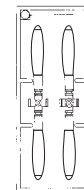
M&gt;



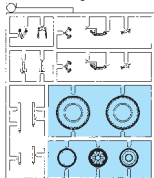
N&gt;



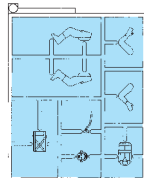
Q&gt;



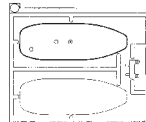
R&gt; 2 pcs.



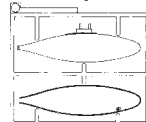
S&gt;



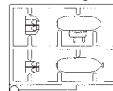
T&gt;



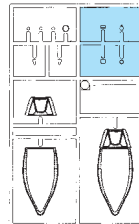
U&gt; 2 pcs.



V&gt; 2 pcs.



X&gt;



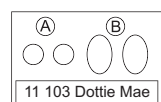
P-1&gt;



P-2&gt; 2 pcs.

eduard  
MASK

FILM



RP - RESIN PARTS

eduard  
BRASSIN

R1 2 pcs.

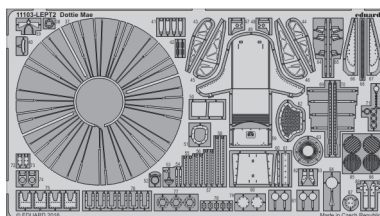
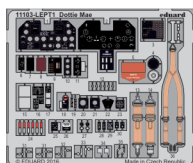


R2 2 pcs.



R3

PE - PHOTO ETCHED DETAIL PARTS



-Parts not for use. -Teile werden nicht verwendet. -Pièces à ne pas utiliser. -Tyto díly nepoužívejte při stavbě. - 使用しない部品

## COLOURS



## BARVY



## FARBEN



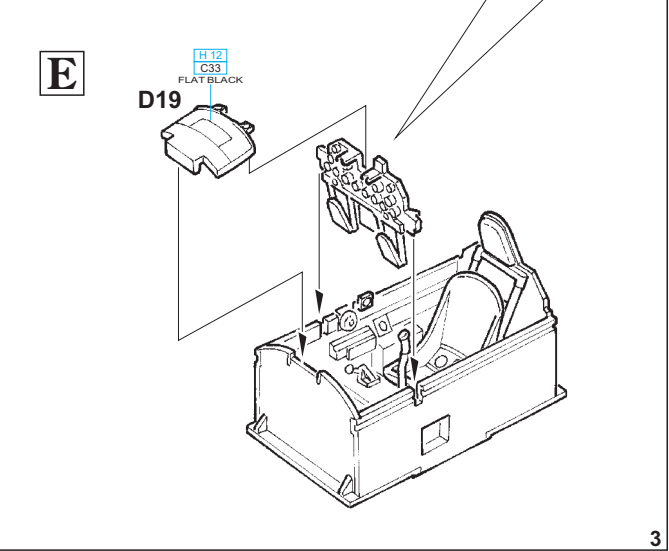
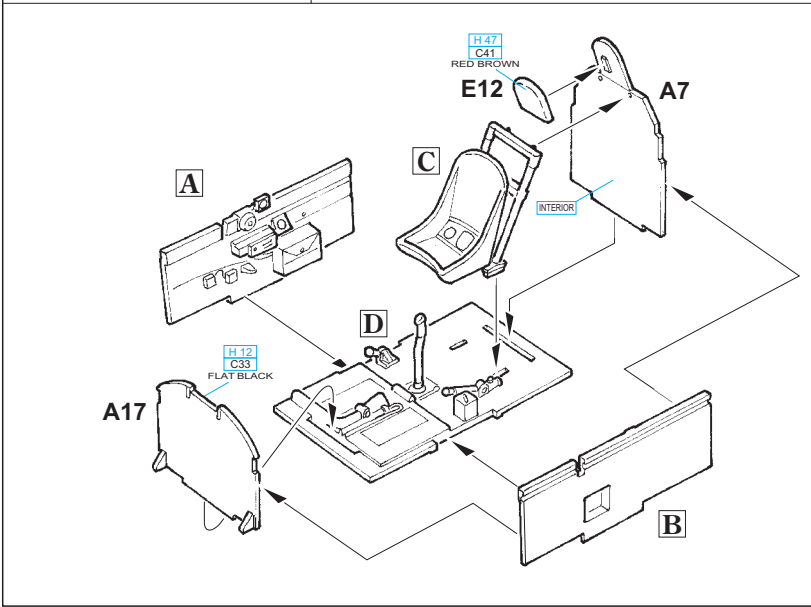
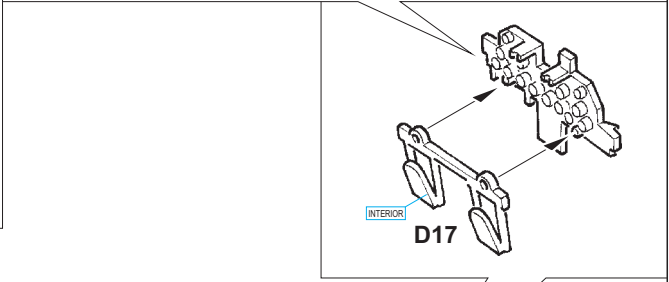
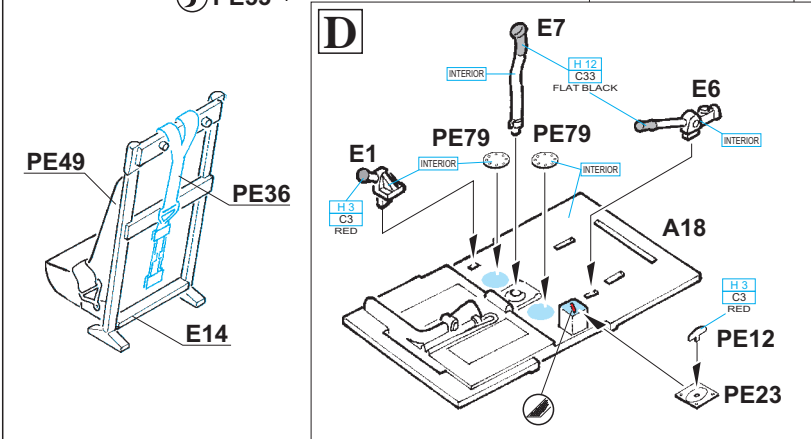
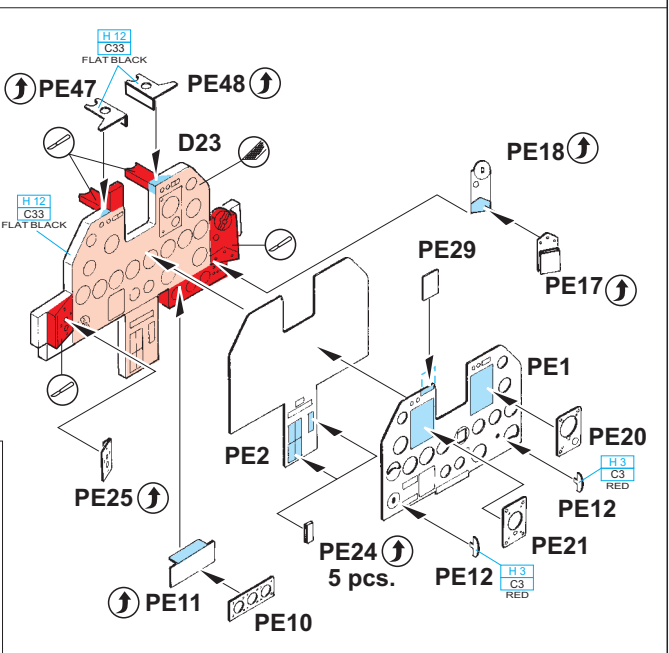
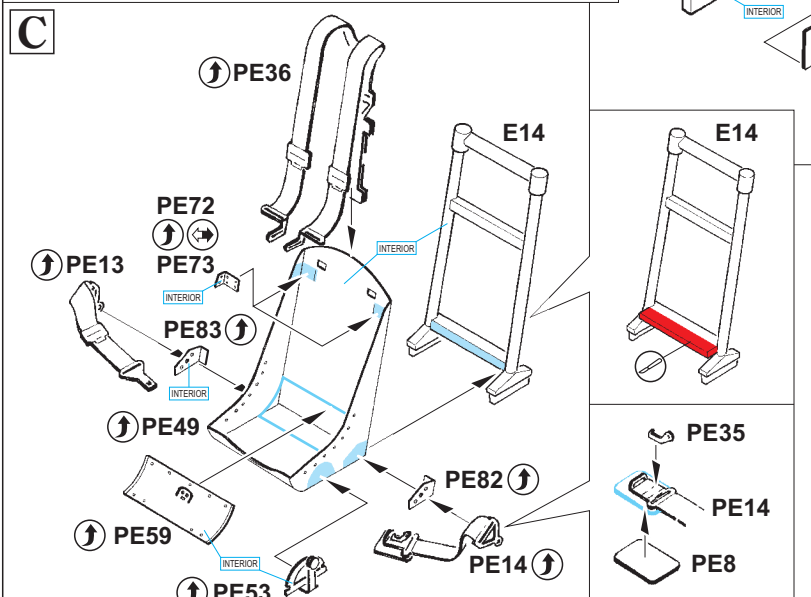
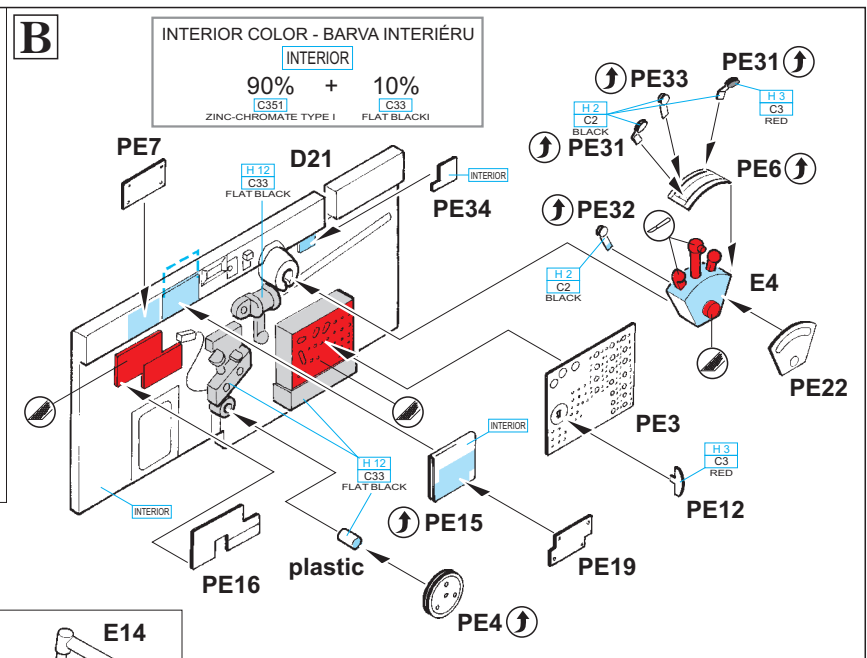
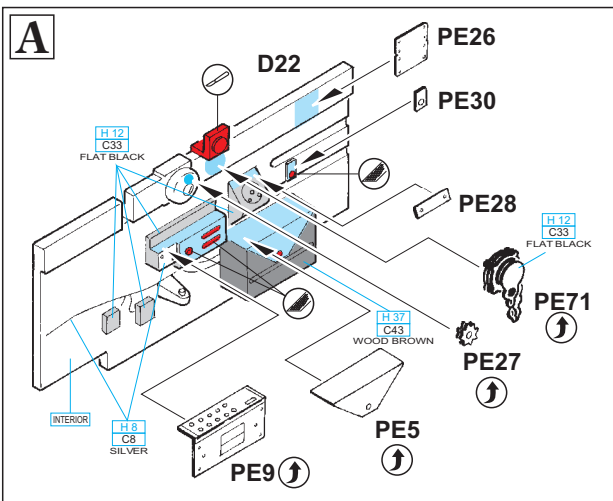
## PEINTURE

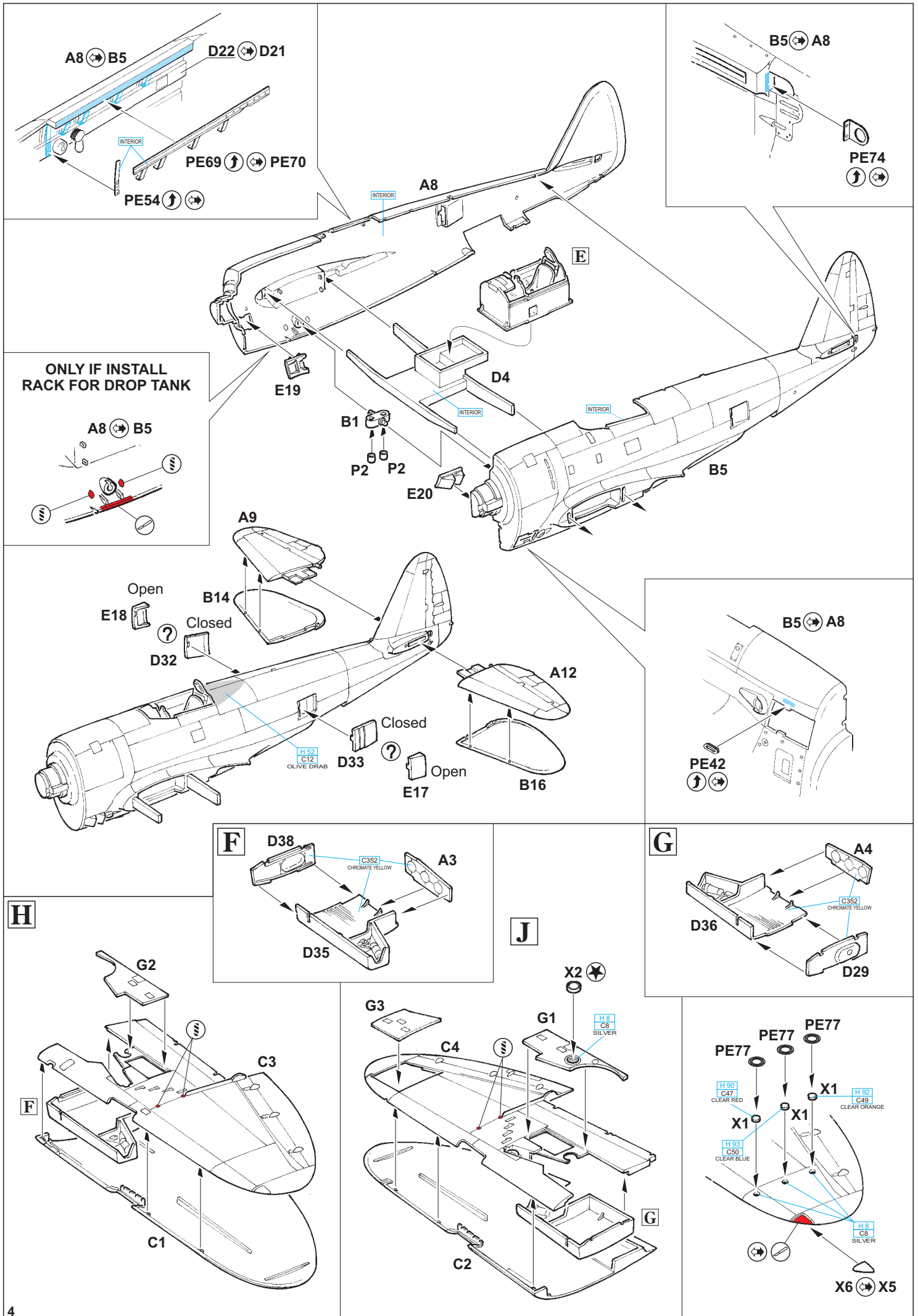


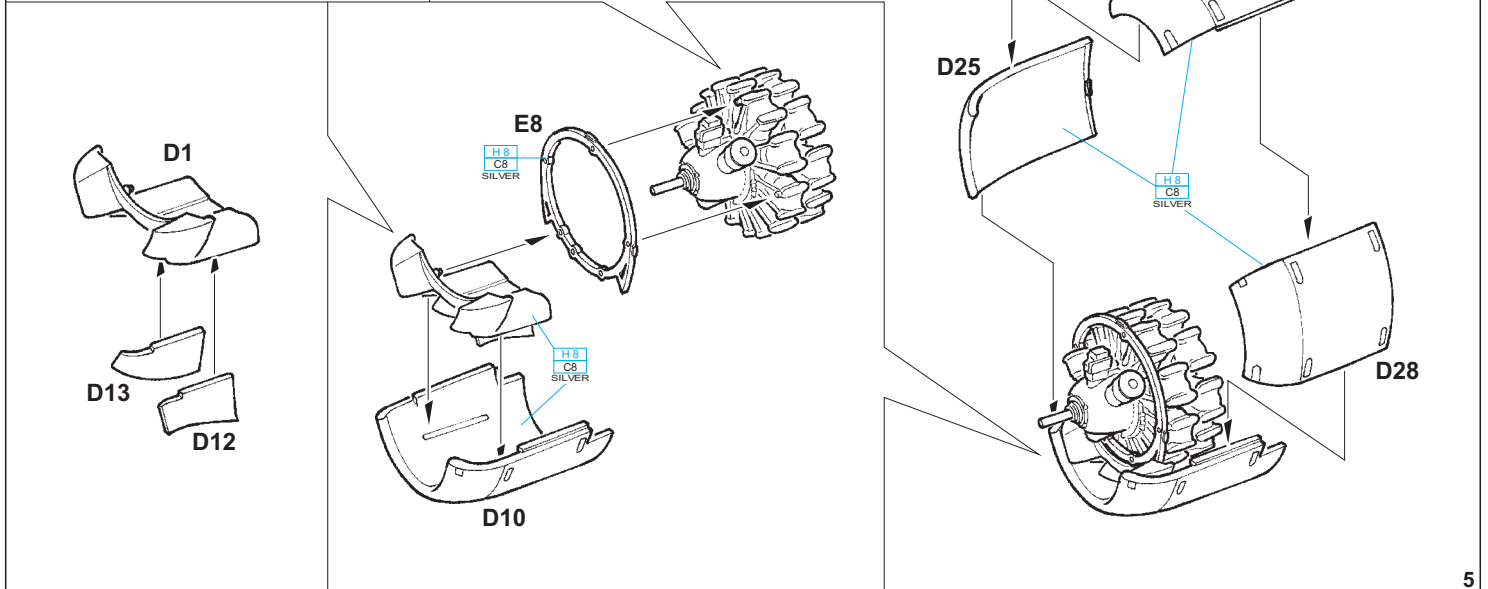
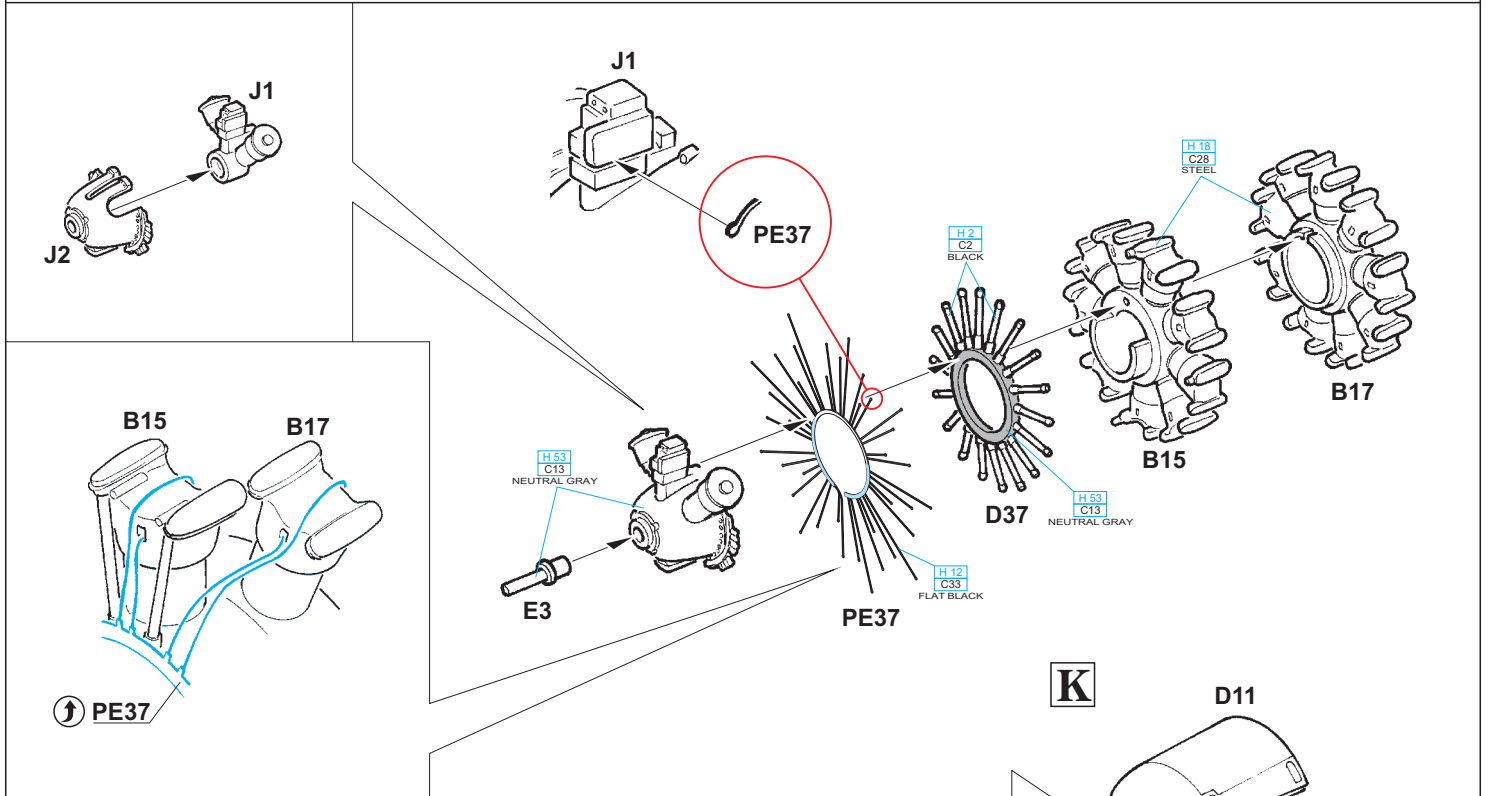
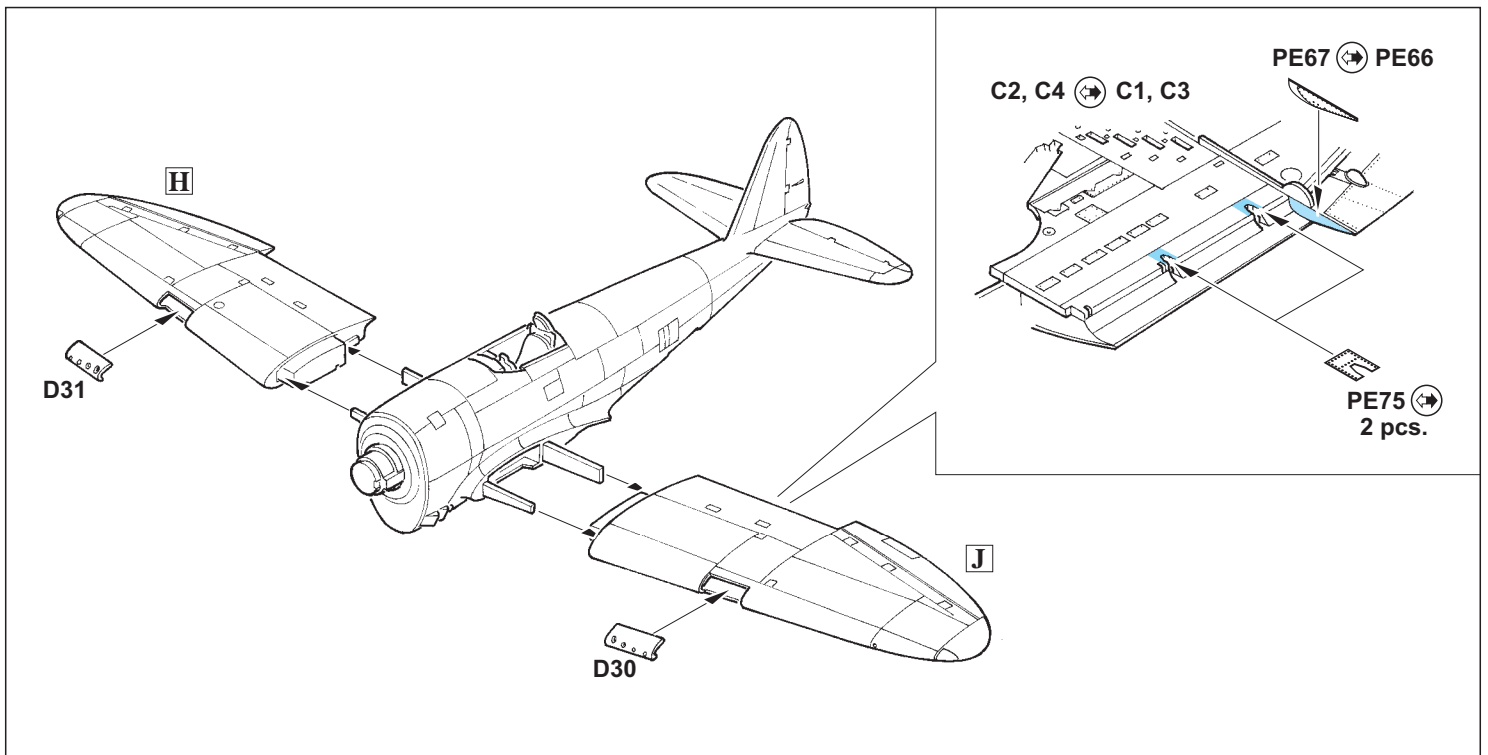
## 色

GSI Creos (GUNZE)		
AQUEOUS	Mr.COLOR	
H 2	C2	BLACK
H 3	C3	RED
H 5	C5	BLUE
H 8	C8	SILVER
H 12	C33	FLAT BLACK
H 18	C28	STEEL
H 37	C43	WOOD BROWN
H 47	C41	RED BROWN
H 52	C12	OLIVE DRAB
H 53	C13	NEUTRAL GRAY
H 76	C61	BURNT IRON

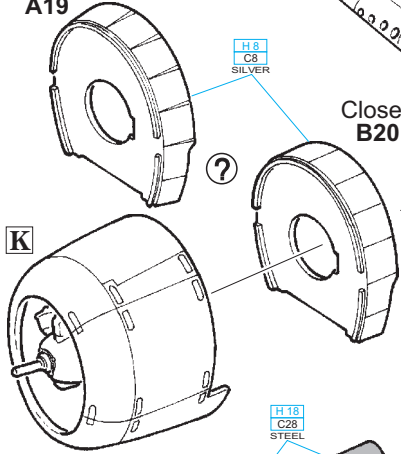
AQUEOUS	Mr.COLOR	
H 77	C137	TIRE BLACK
H 90	C47	CLEAR RED
H 92	C49	CLEAR ORANGE
H 93	C50	CLEAR BLUE
H 316	C316	WHITE
H 327	C327	RED
H 329	C329	YELLOW
	C361	ZINC-CHROMATE
	C352	CHROMATE YELLOW
Mr.COLOR SUPER METALLIC		
SM01		SUPER FINE SILVER







Open  
A19



Closed  
B20

PE85

H 8  
C8  
SILVER

PE62

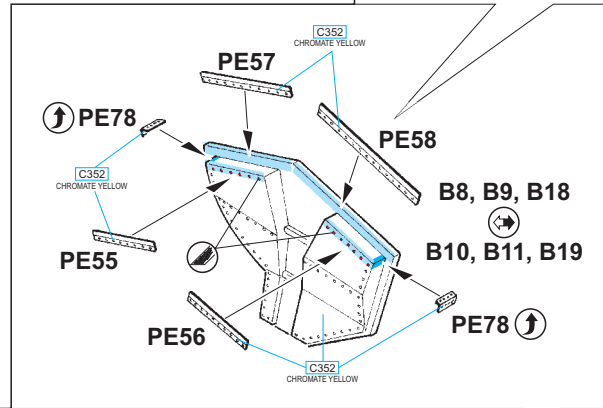
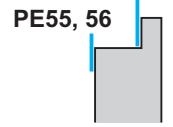
H 18  
C28  
STEEL

PE86

H 18  
C28  
STEEL

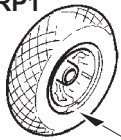
B7

PE57, 58

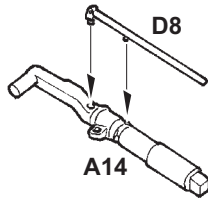


**L** **eduard**  
**BRASSIN** 2 pcs.

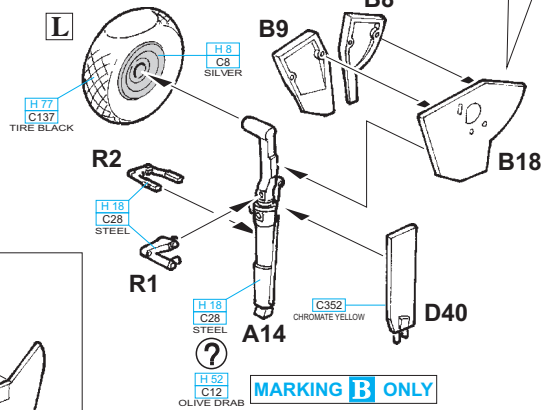
RP1



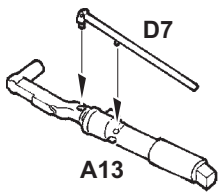
RP2



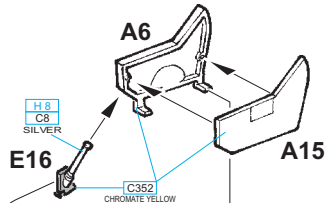
A14



MARKING B ONLY



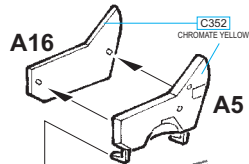
A13



E16

A6

A15



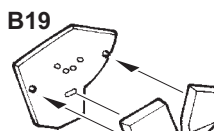
A16

A5

H 8  
C8  
SILVER

E15

C352  
CHROMATE YELLOW



B10

H 77  
C137  
TIRE BLACK

L

R1

H 18  
C28  
STEEL

A13

H 18  
C28  
STEEL

H 8  
C8  
SILVER

R2

D39

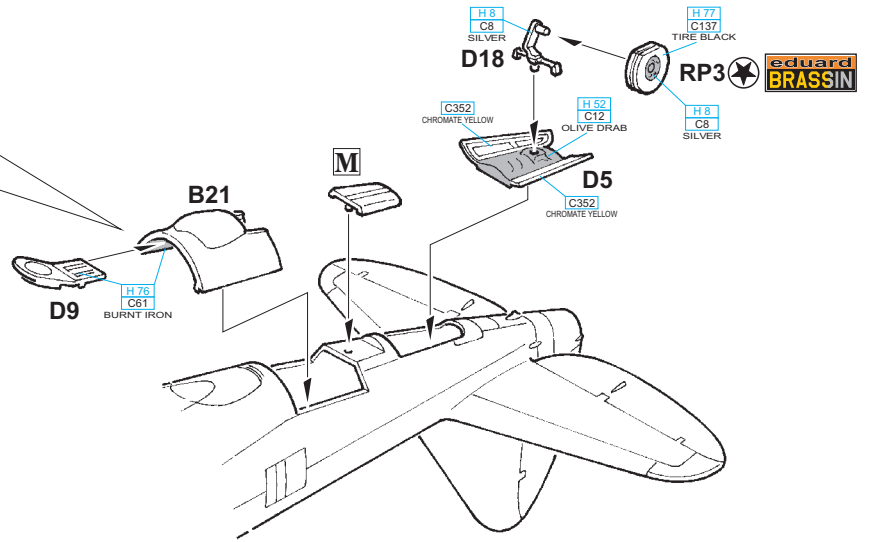
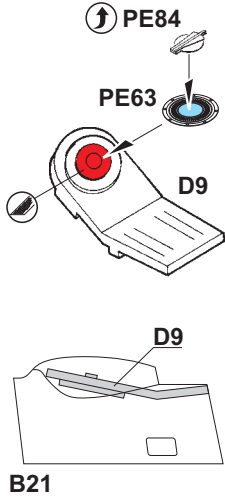
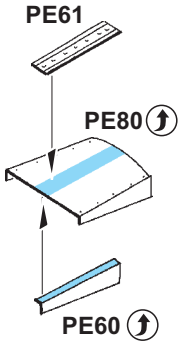
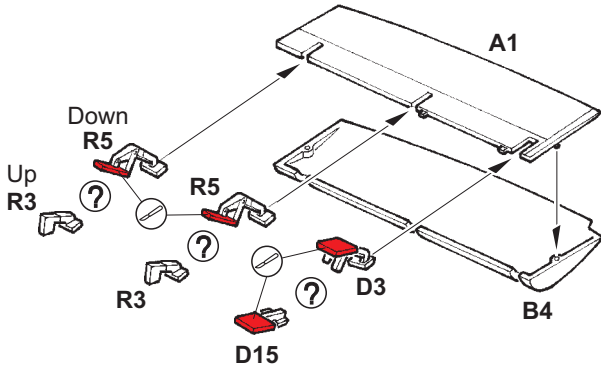
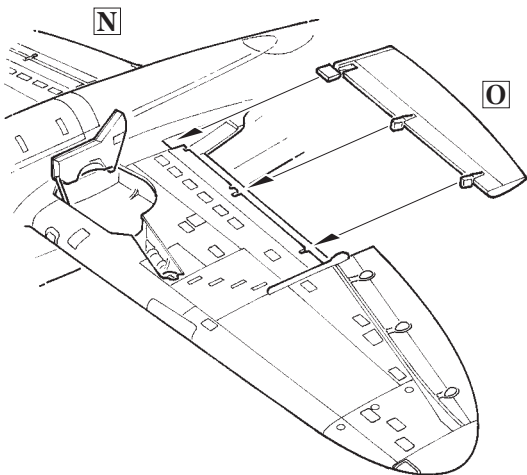
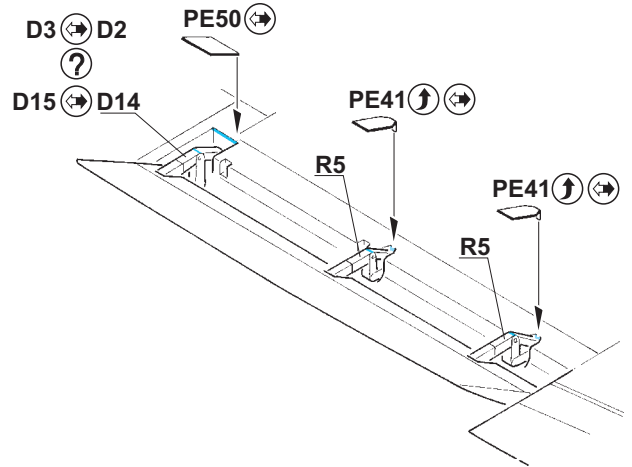
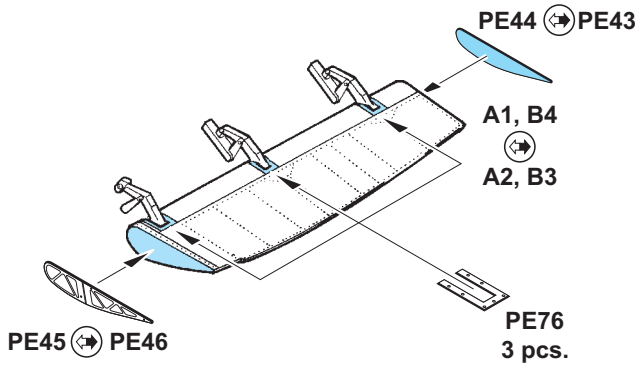
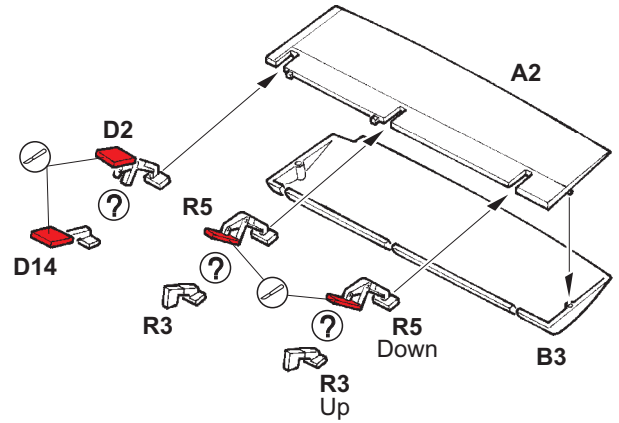
C352  
CHROMATE YELLOW

H 18  
C28  
STEEL

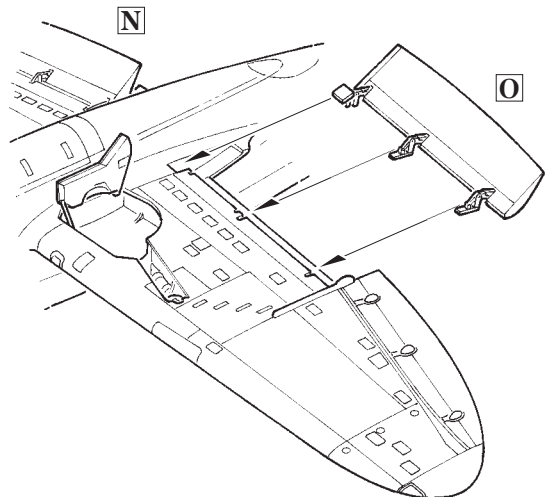
H 52  
C12  
OLIVE DRAB

MARKING B ONLY

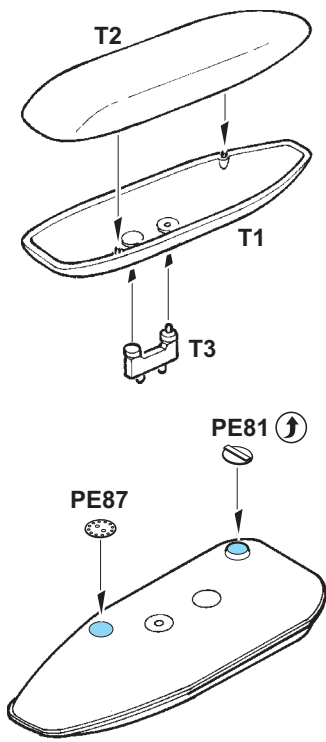
H 52  
C12  
OLIVE DRAB

**M****N****O**

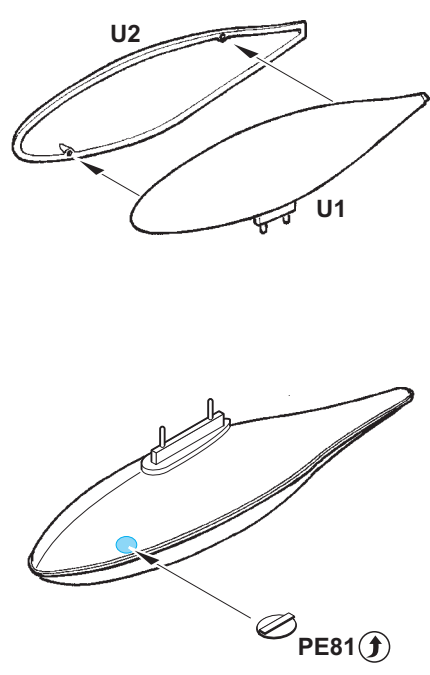
?



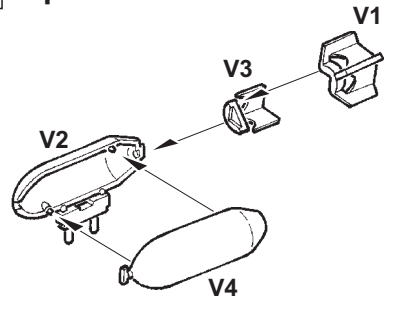
**P**



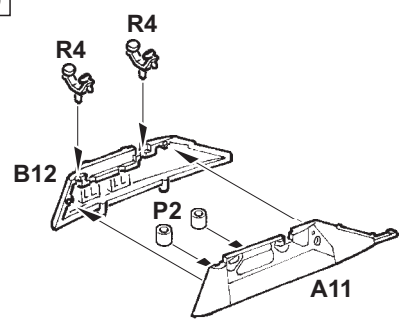
**Q** 2 pcs.



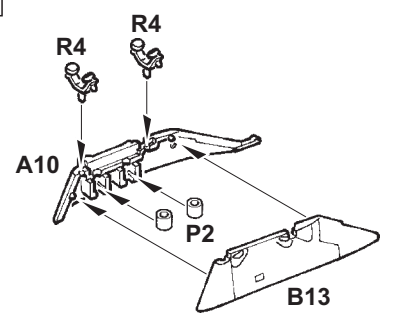
**R** 2 pcs.



**S**



**T**



**MARKING B ONLY**

H 53 C13 NEUTRAL GRAY  
H 8 C8 SILVER

H 52 C12 OLIVE DRAB

H 52 C12 OLIVE DRAB

H 8 C8 SILVER

H 53 C13 NEUTRAL GRAY

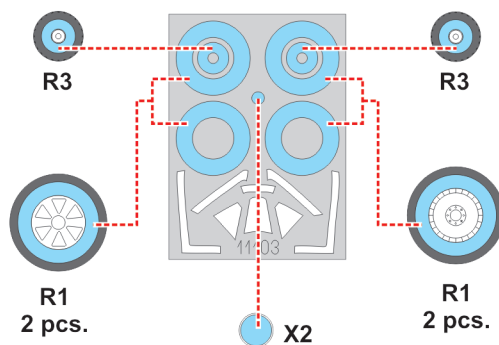
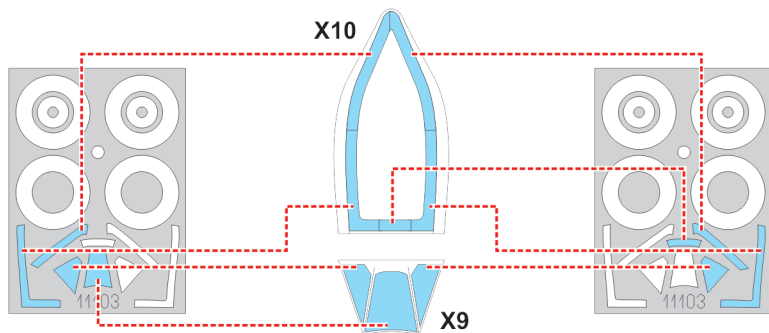
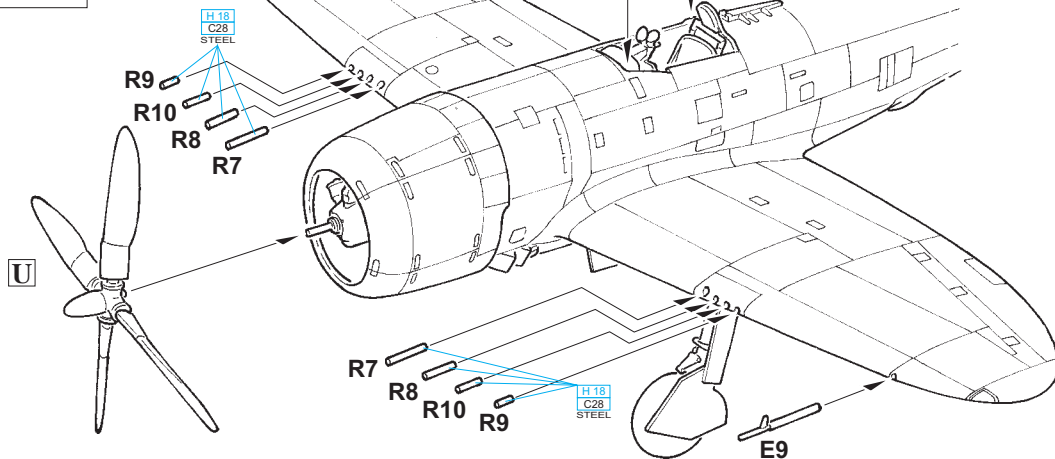
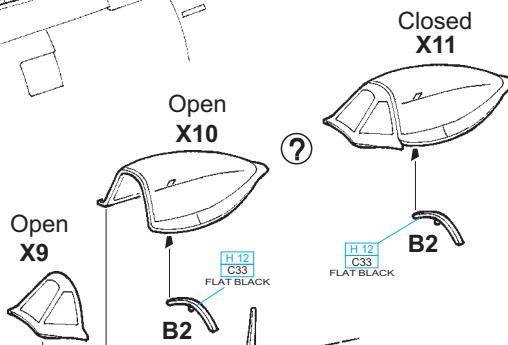
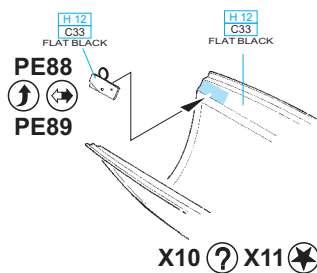
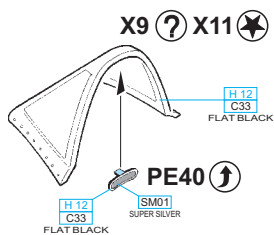
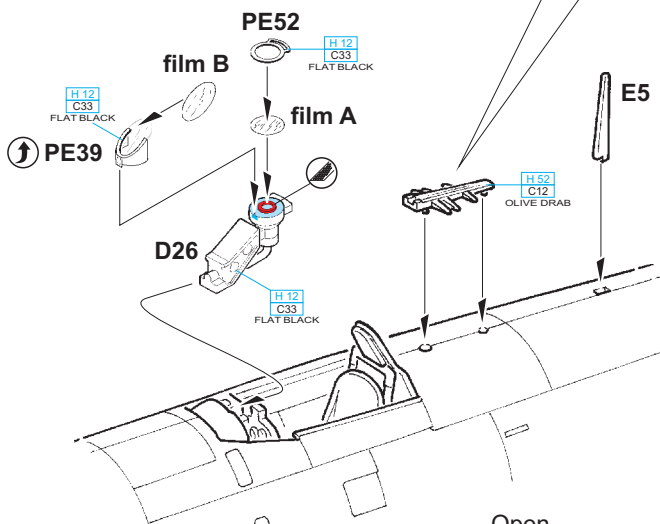
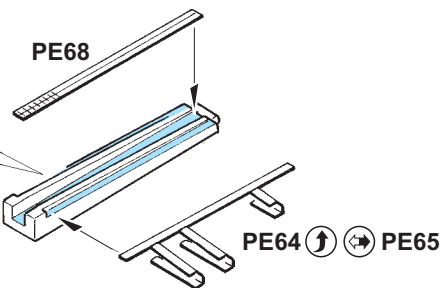
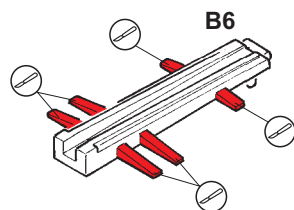
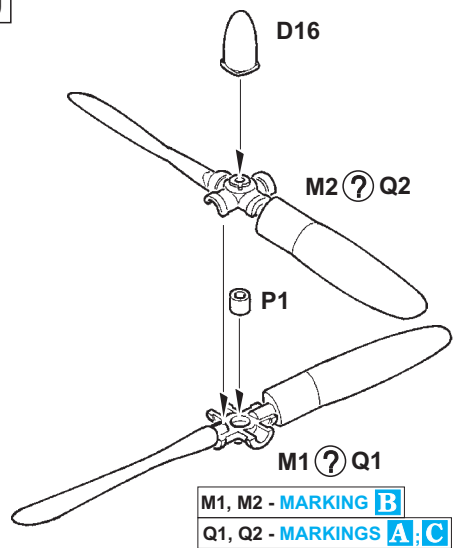
**MARKING B ONLY**

↻ PE51

↻ PE38

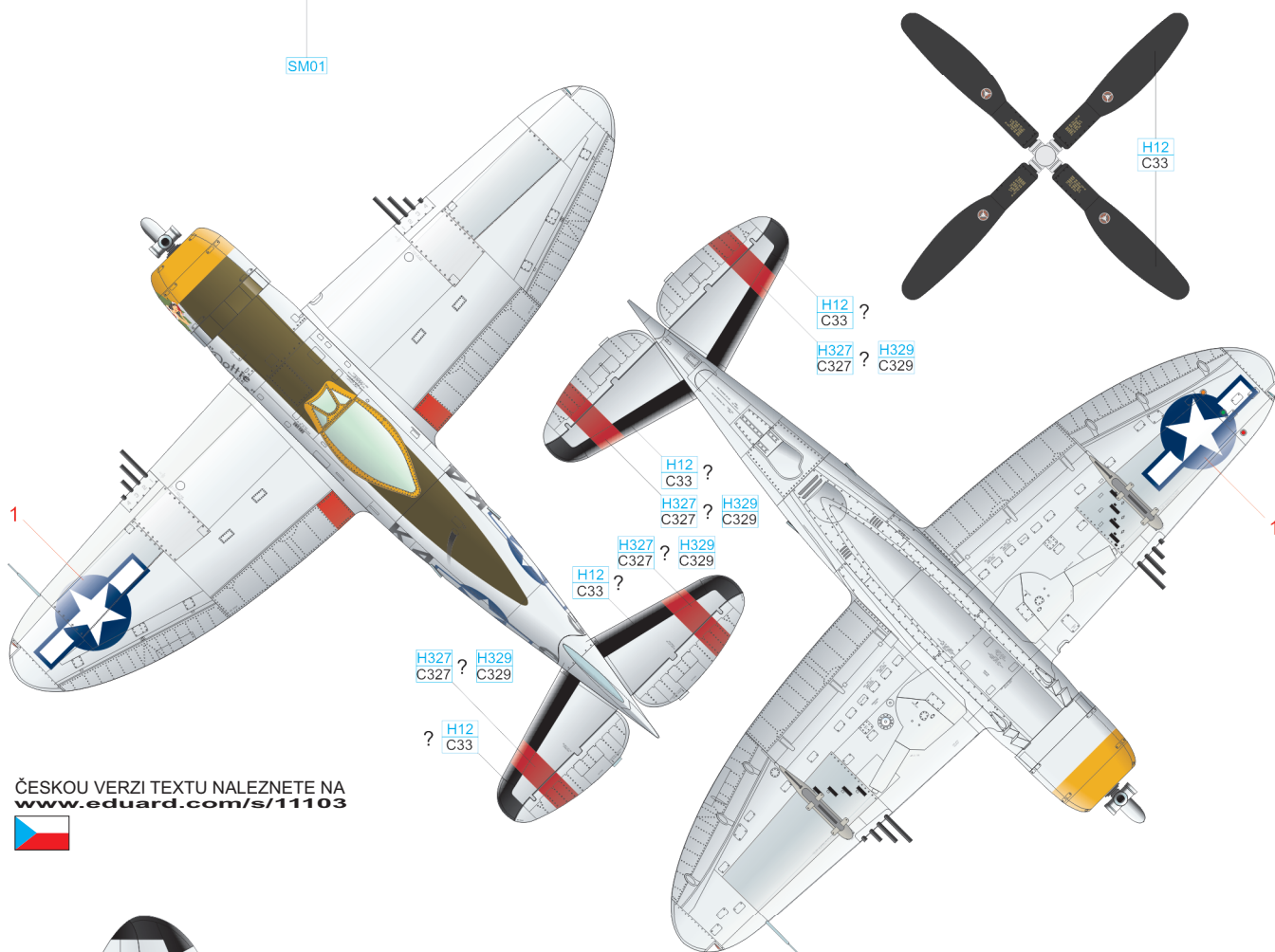
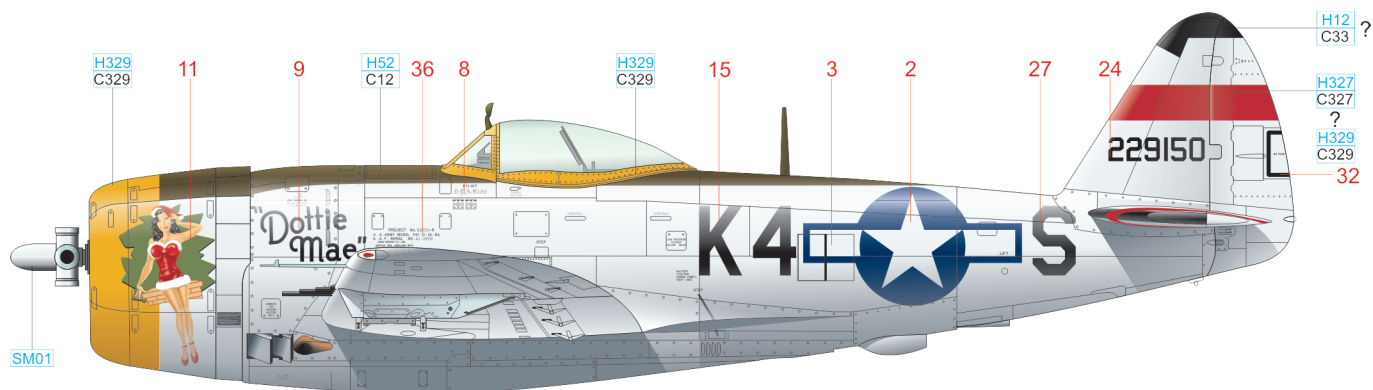


U

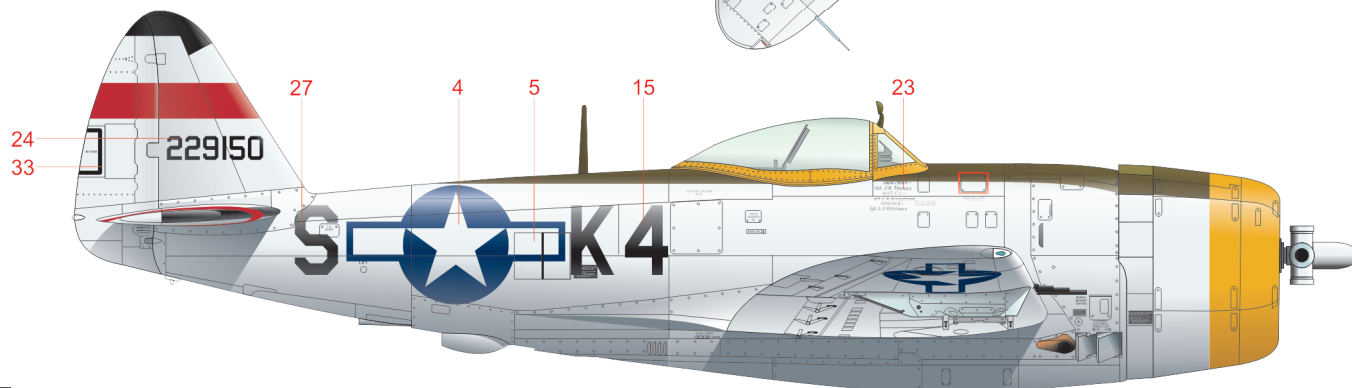


# A P-47D-28-RA, Lt. Larry A. Kuhl, 511th FS, 405th FG, 9th AF, Saint Dizier, December 1944

This P-47D Thunderbolt was delivered to the 511th Fighter Squadron towards the end of 1944 and was assigned to Lt. Larry A. Kuhl. The aircraft was named after his wife, Dottie Mae. The Vargas inspired artwork depicting an attractive woman was courtesy of S/Sgt. Samuel L. Kirschenbaum. The aircraft's career ended on May 8th, 1945 when Lt. Mohr flew in very low over the Austrian lake Traunsee, and the prop clipped the surface of the water. The aircraft crashed, but the pilot was fortunately saved. The aircraft lay on the bottom of the lake for decades until it was brought to the surface on June 13, 2005, and transferred to the United States where it is currently undergoing restoration. The aircraft flew in natural metal, except for the spine, which was sprayed in an Olive Green that served as an anti-glare device. For service with the 511th Fighter Squadron, the aircraft received yellow stripes on the tail surfaces and the engine cowl, and also had a yellow framework around the canopy. While in service, the aircraft had the tail stripes painted over in red and leading edges on ruder was painted black.



ČESKOU VERZI TEXTU NALEZNETE NA  
[www.eduard.com/s/11103](http://www.eduard.com/s/11103)



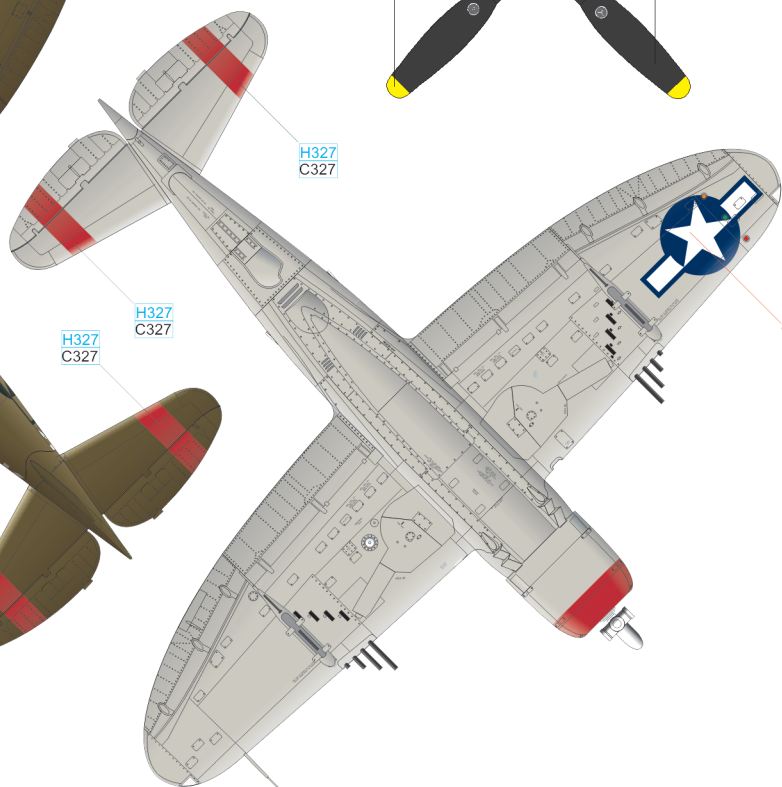
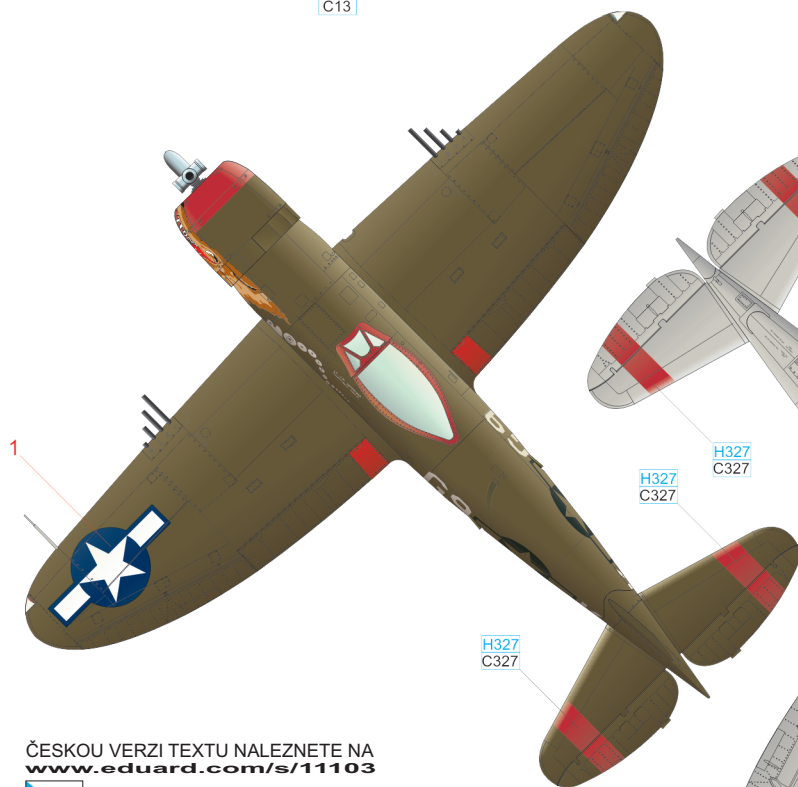
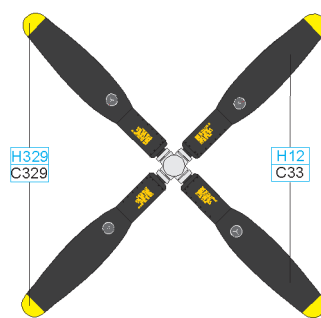
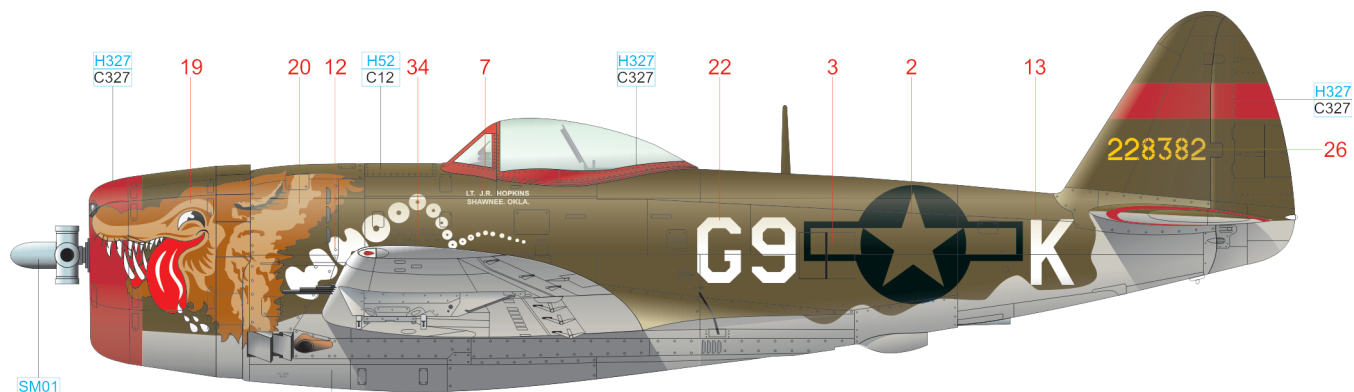
BLACK	H12	C33
OLIVE DRAB	H52	C12
YELLOW	H329	C329
RED	H327	C327
SILVER	SM01	

FOR STENCILING POSITION GO TO:  
[www.eduard.com/s/11103](http://www.eduard.com/s/11103)

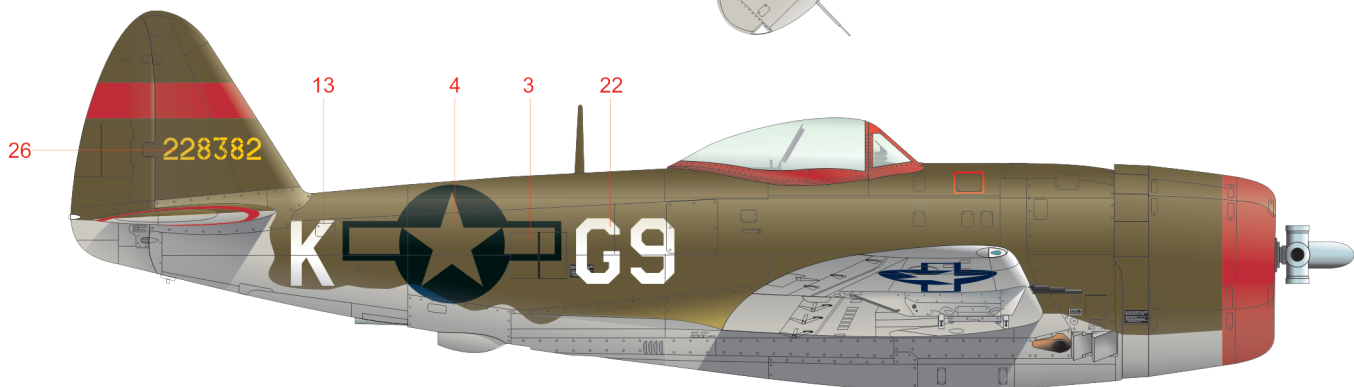
**eduard**

# B P-47D-26-RA, Lt. James R. Hopkins, 509th FS, 405th FG, 9th AF, Ophoven, Belgium, March 1945

Dash 26 Thunderbolts were the first machines to be built at Evansville with a bubble canopy and equipped with a Curtiss Electric 13'-1" asymmetrical propeller. The wolf head was painted on this aircraft by Sgt. Eli Gutierrez. It was inspired by a college American football team of which the pilot of this plane, James R. Hopkins, was a former member. This Thunderbolt carried a less common camouflage scheme seen on bubbletops, that saw the upper surfaces painted Olive Green and the lowers Neutral Gray. As was standard practice for 405th Fighter Group aircraft, red stripes were placed on the tail surfaces and on the engine cowl. Red canopy framing was carried by aircraft of the 509th Fighter Squadron.



ČESKOU VERZI TEXTU NALEZNETE NA  
[www.eduard.com/s/11103](http://www.eduard.com/s/11103)



BLACK	H12 C33	YELLOW	H329 C329
OLIVE DRAB	H52 C12	GRAY	H53 C13
RED	H327 C327	SILVER	SM01

FOR STENCILING POSITION GO TO:  
[www.eduard.com/s/11103](http://www.eduard.com/s/11103)

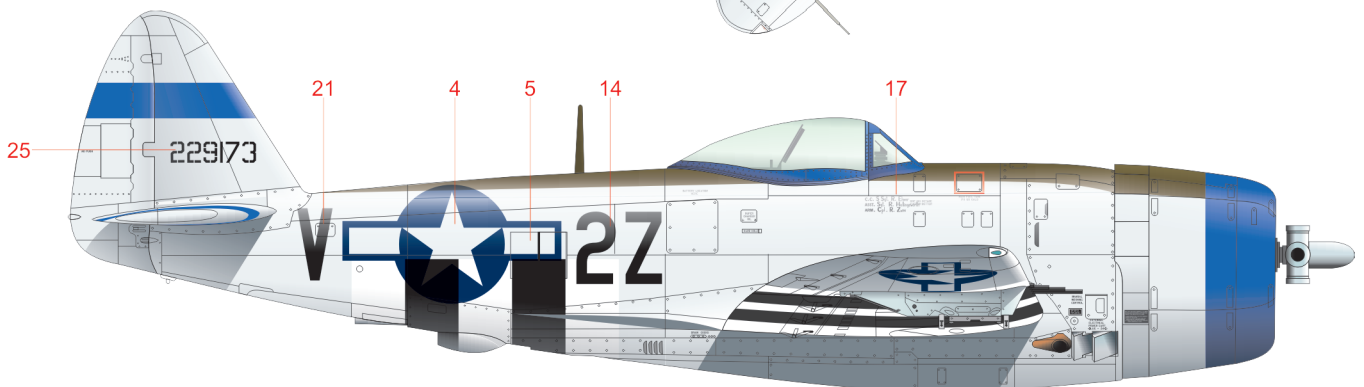
eduard

# C P-47D-28-RA, Lt. Francis Norr, 510th FS, 405th FG, 9th AF, Saint Dizier, France, January 1945

The aircraft named 'Pilot's Dream IV', that with the 405th Fighter Group flew in a natural metal finish (save for the anti-glare olive drab areas), was flown by Lt. Francis 'Buzz' Norr. During the battle for the Ardennes, he shot down four Focke-Wulf Fw 190s. The aircraft carried blue stripes on its tail surfaces, on the engine cowl, and had the canopy framing painted blue as well. These were the colours used on the aircraft of the 510th Fighter Squadron. The bottom of the fuselage and the bottom of the wings sported remnants of the D-Day invasion stripes that were placed there as quick recognition aids.



ČESKOU VERZI TEXTU NALEZNETE NA  
[www.eduard.com/s/11103](http://www.eduard.com/s/11103)



BLACK	H12 C33	WHITE	H316 C316
OLIVE DRAB	H52 C12	BLUE	H5 C5
		SILVER	SM01

FOR STENCILING POSITION GO TO:  
[www.eduard.com/s/11103](http://www.eduard.com/s/11103)

