

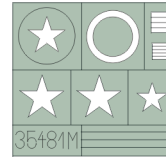
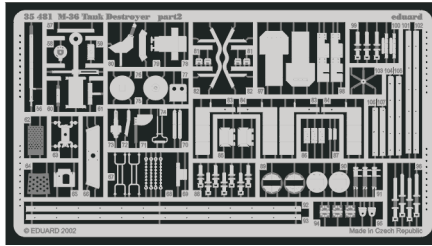
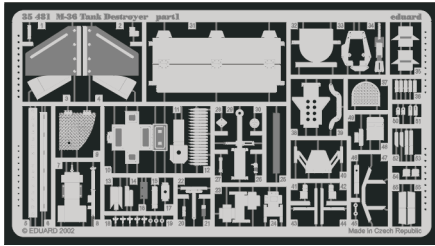


M-36 Tank Destroyer





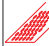

eduard

1/35 scale detail set for Italeri No.250 kit • sada detailů pro model 1/35 Italeri No.250

35 481



Mask

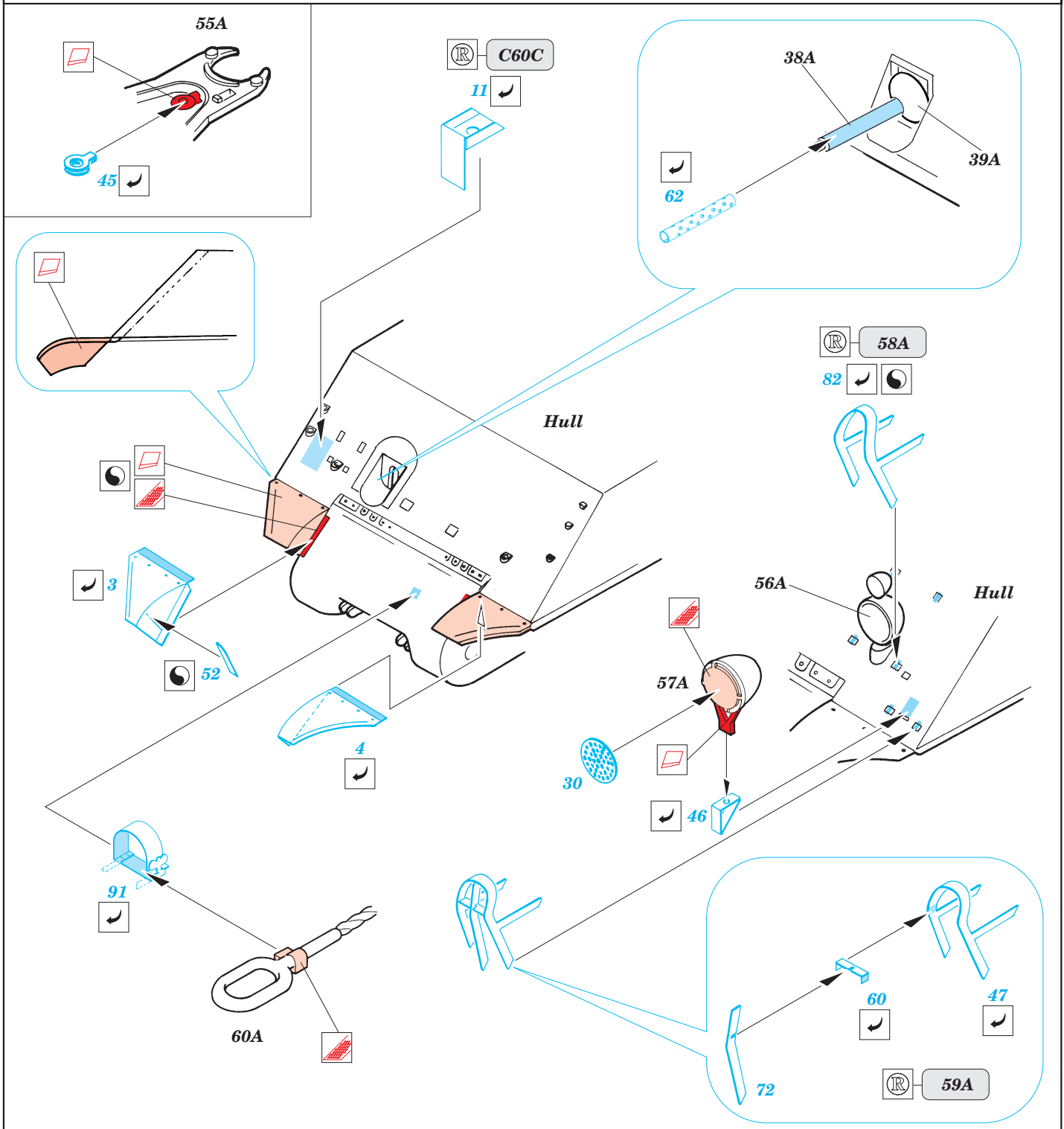
-  SYMMETRICAL ASSEMBLY
SYMETRICKÁ MONTÁŽ
-  REMOVE
ODSTRANIT
-  BEND
OHNOUT
-  REPLACE
NAHRADIT
-  GRIND
OBROUSIT
-  OPTION
VOLBA

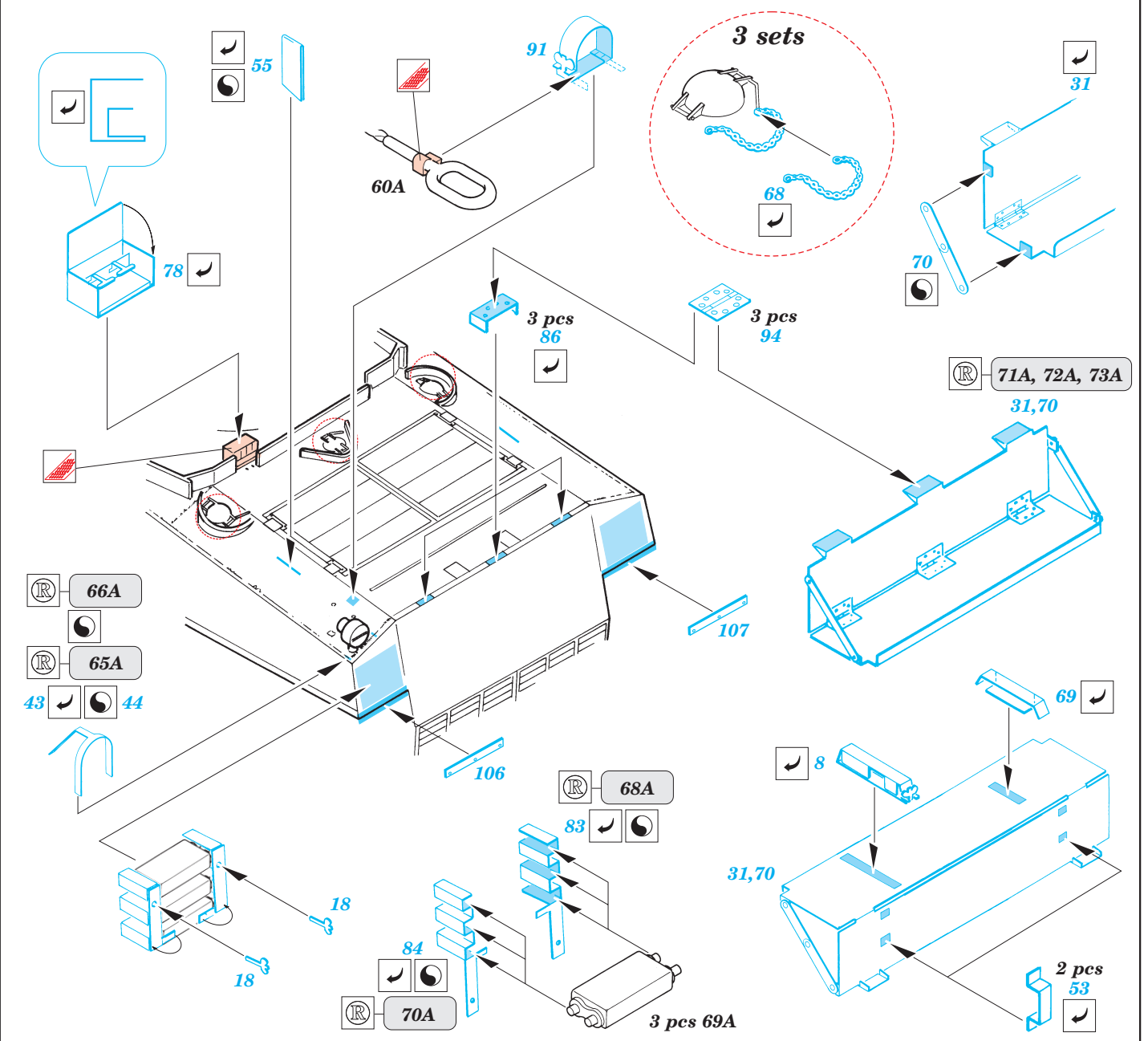
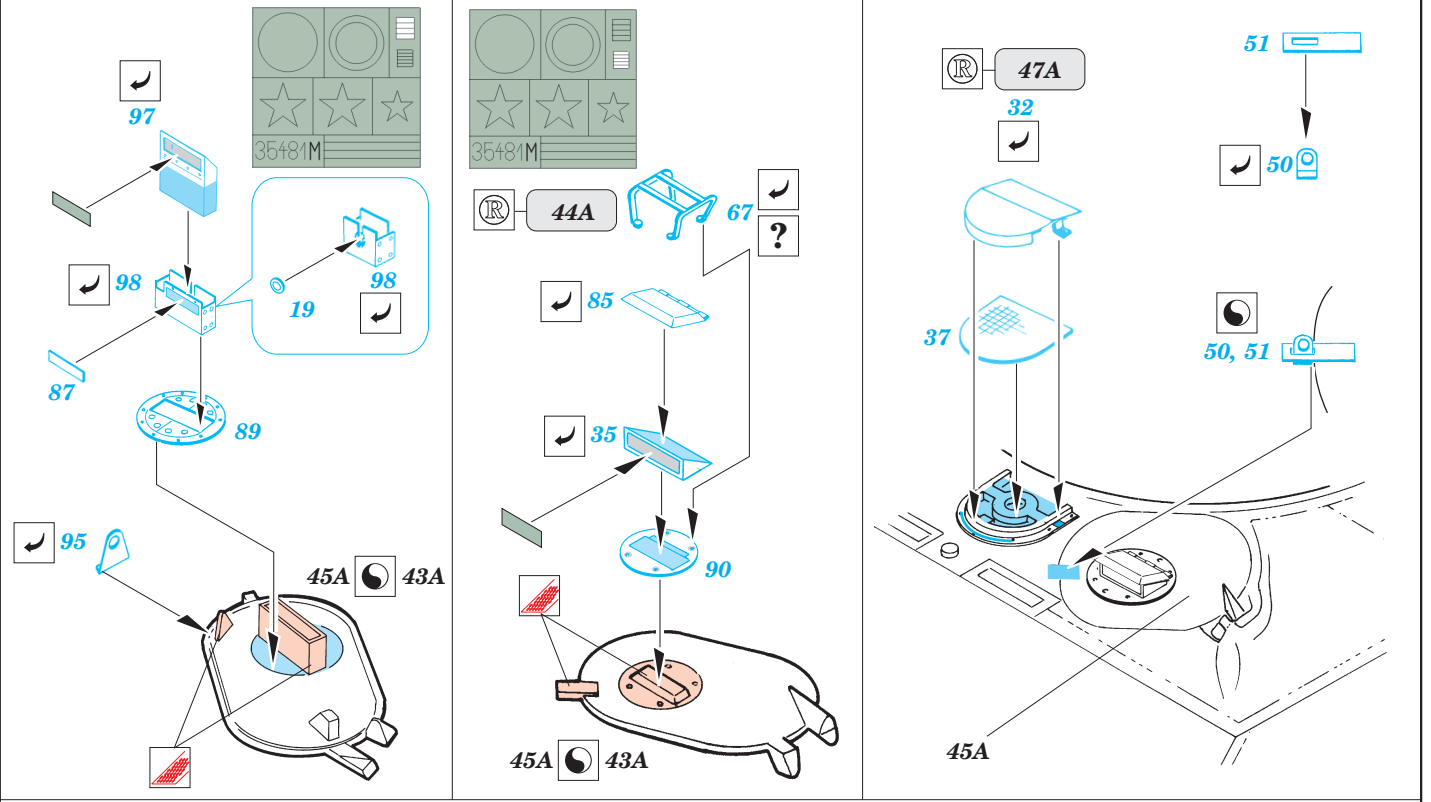
 ORIGINAL KIT PARTS
PŮVODNÍ DÍLY STAVEBNICE

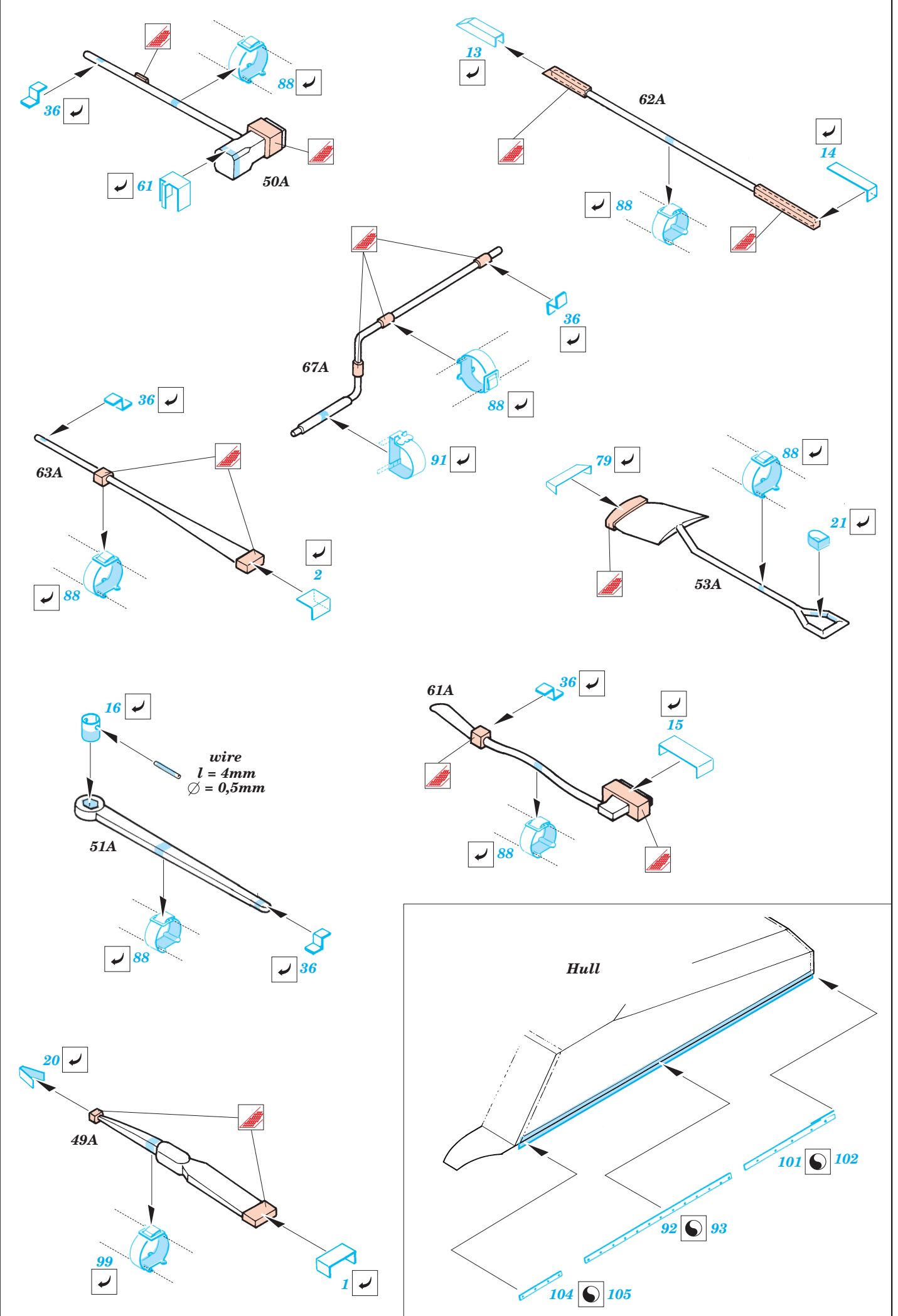
 PHOTO-ETCHED PARTS
LEPTANÉ DÍLY

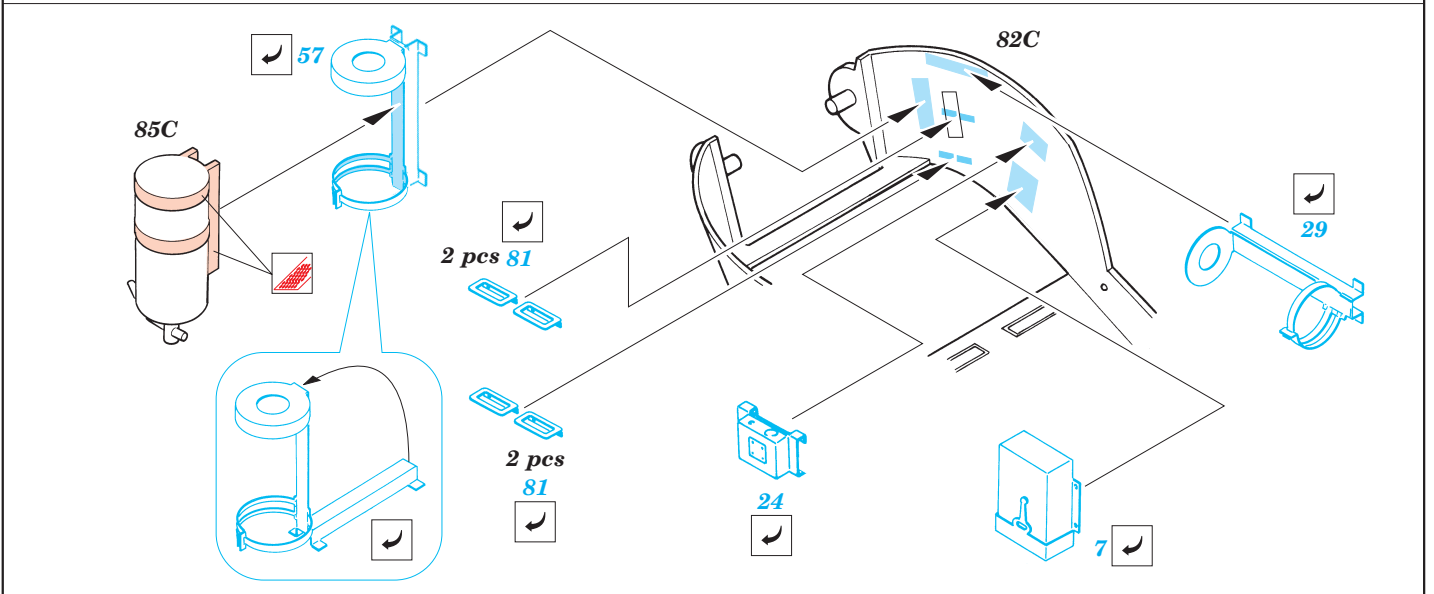
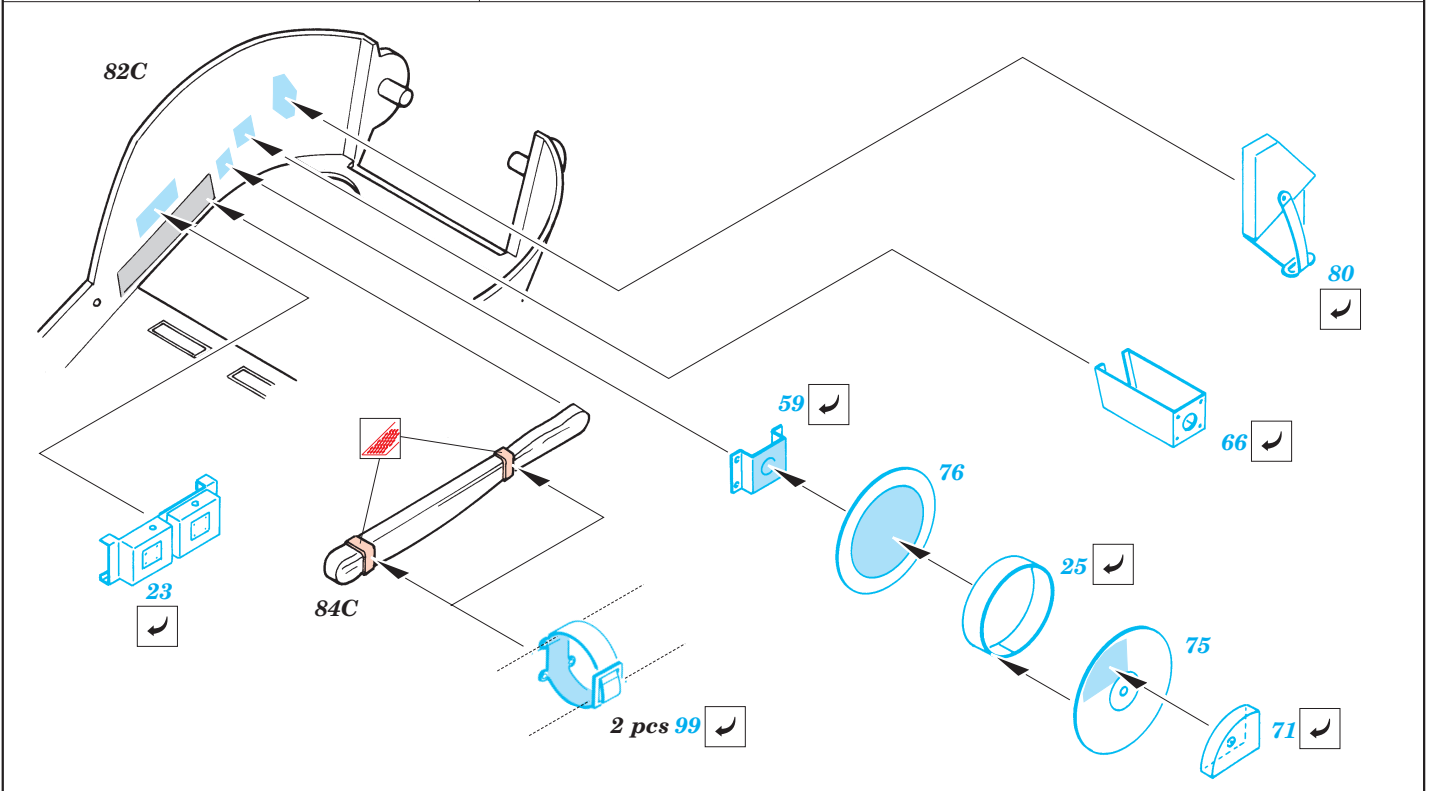
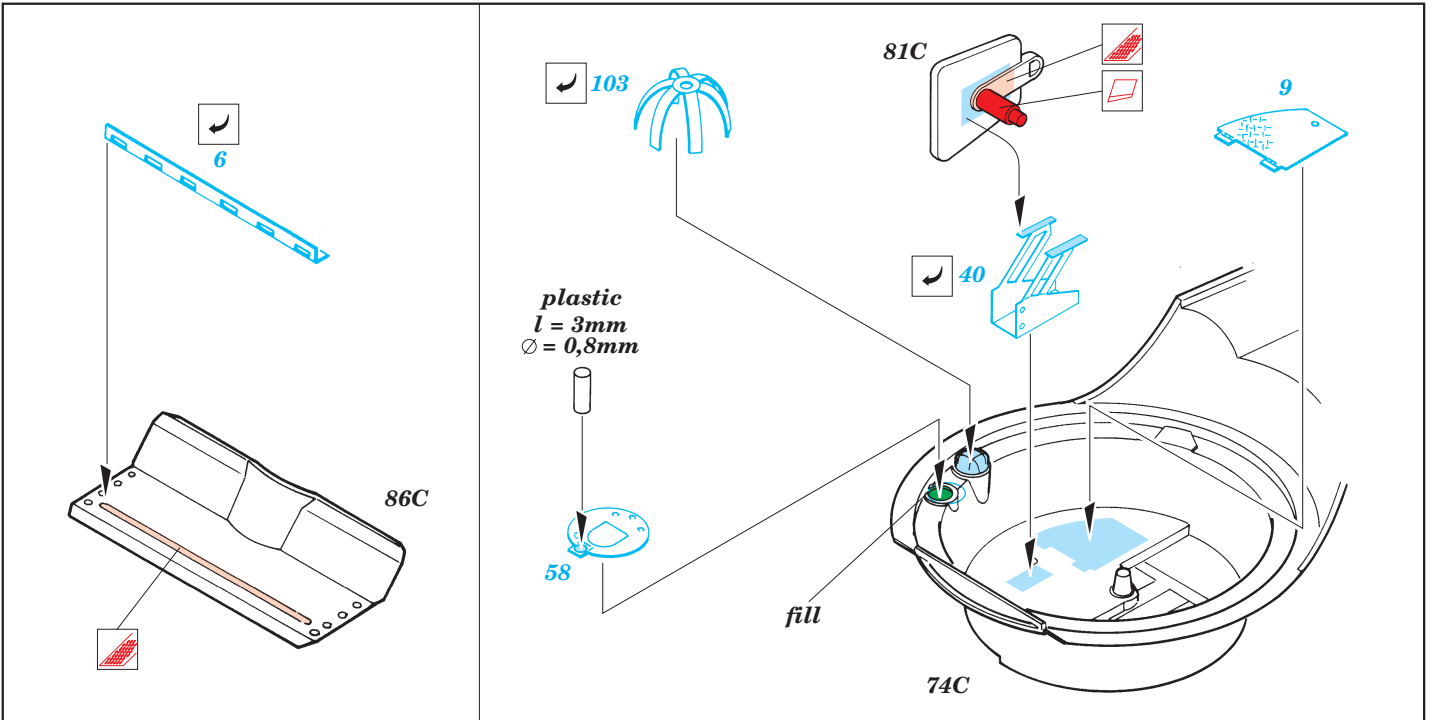
 PARTS TO BE REMOVED
DÍLY K ODSTRANĚNÍ

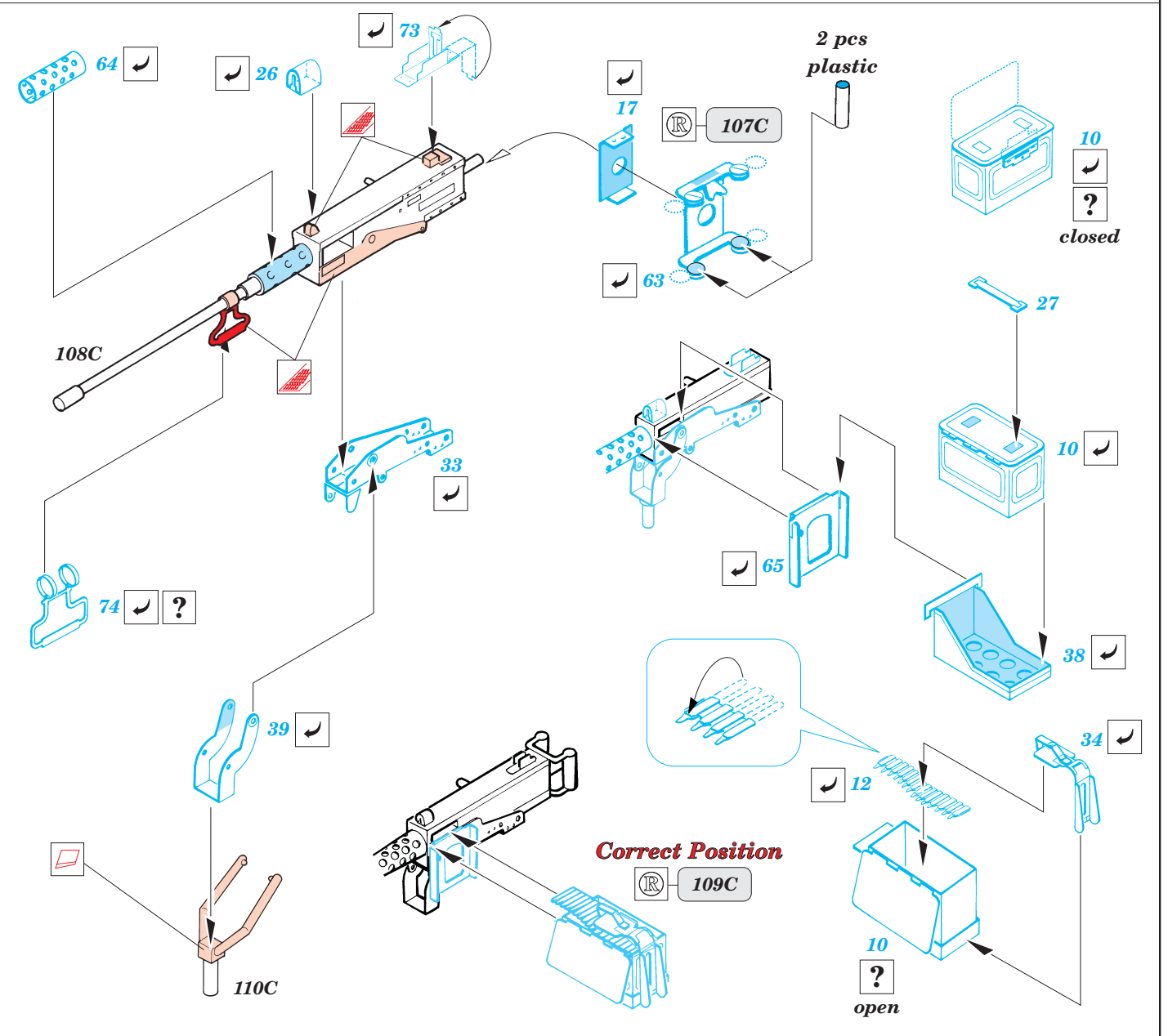
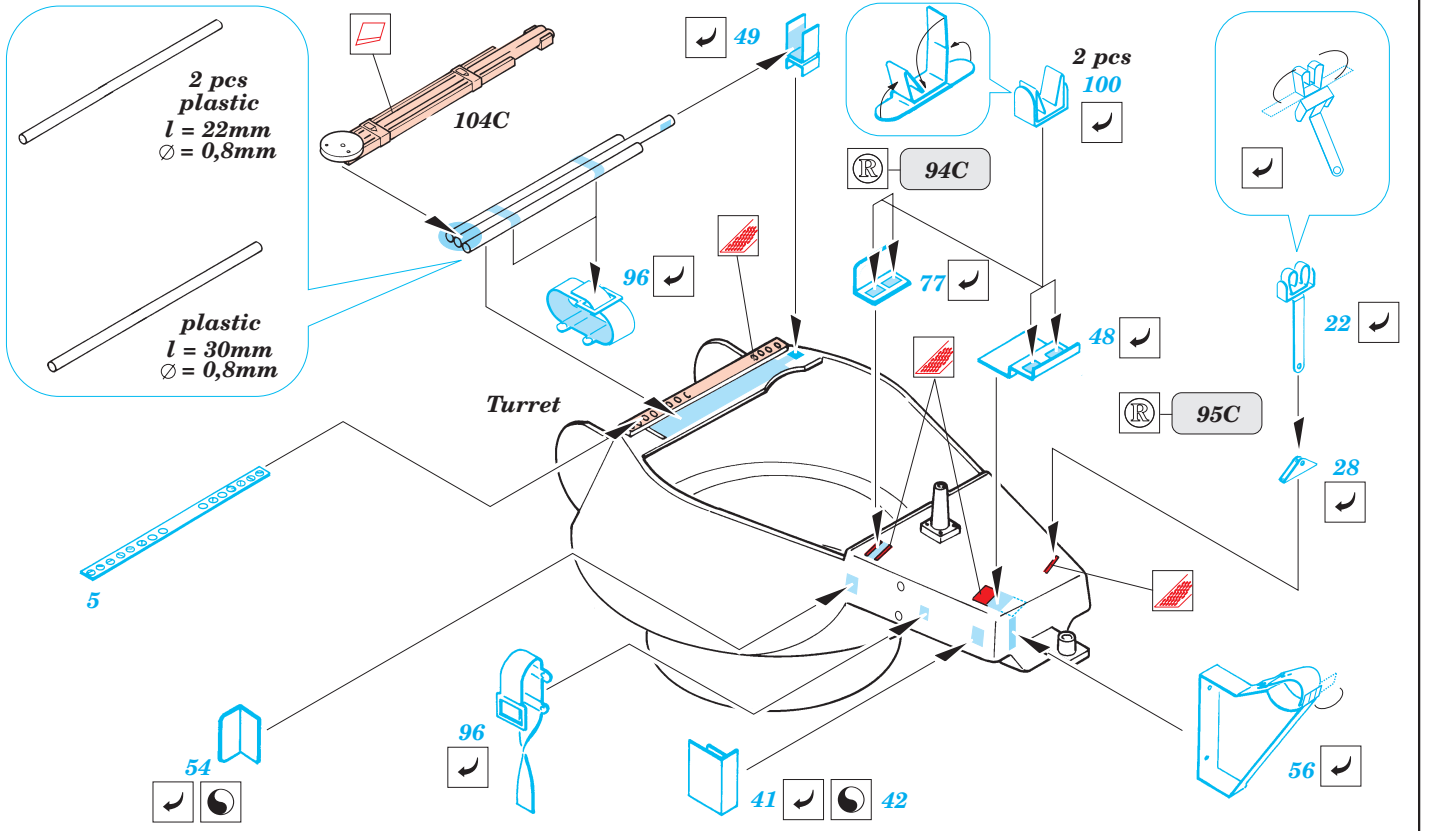
 FILL
TMELIT

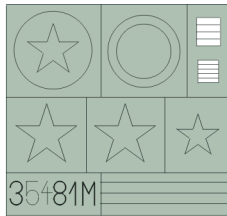




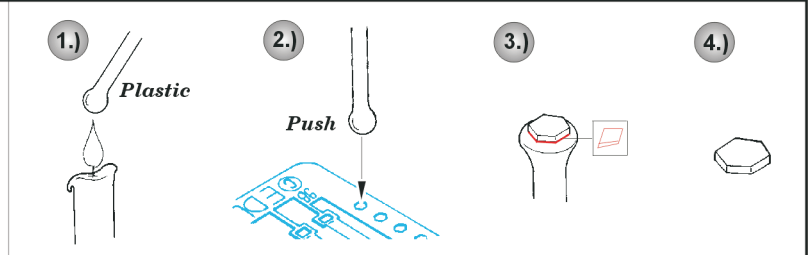




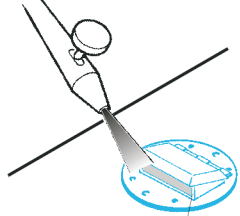




Mask

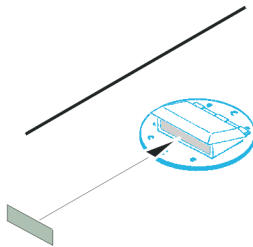


1.) GLOSS BLACK

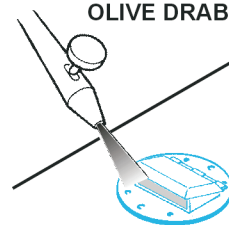


35 (97)

2.)

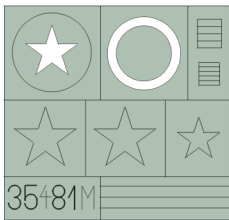
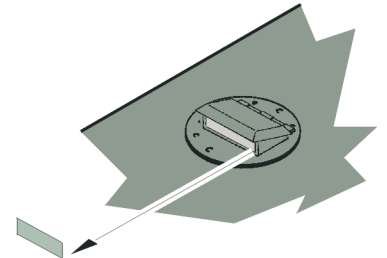


3.)

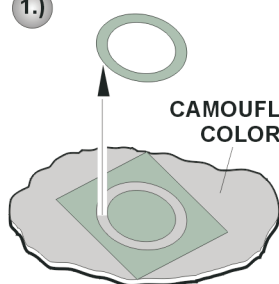


OLIVE DRAB

4.)

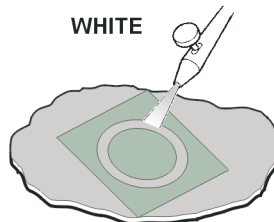


1.)



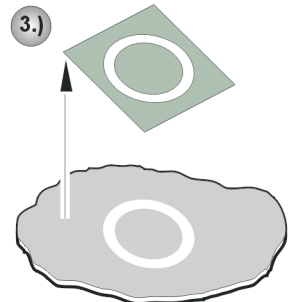
CAMOUFLAGE COLOR

2.)

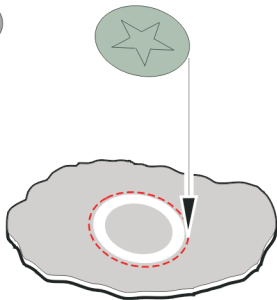


WHITE

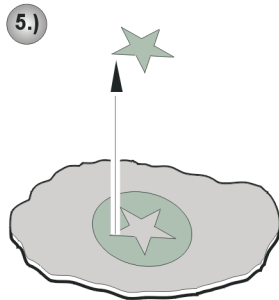
3.)



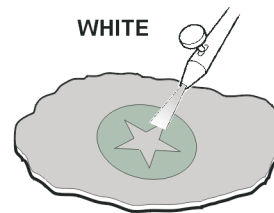
4.)



5.)

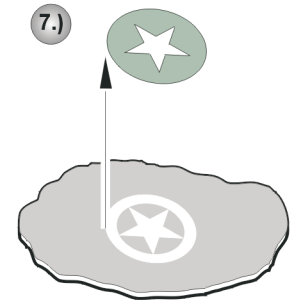


6.)



WHITE

7.)



- References :
- Walk Around No.1 : M4 Sherman
 - Squadron/Signal 2036 : U.S. Tank Destroyers in Action
 - Military Modeling Vol.31 1/2001
 - Concord No.7005 : U.S. Tank Destroyers in Combat 1941-1945

Look for other ~~E~~xpress Mask set for useful for building the U.S. ARMY AFVs (not included in this set)

