

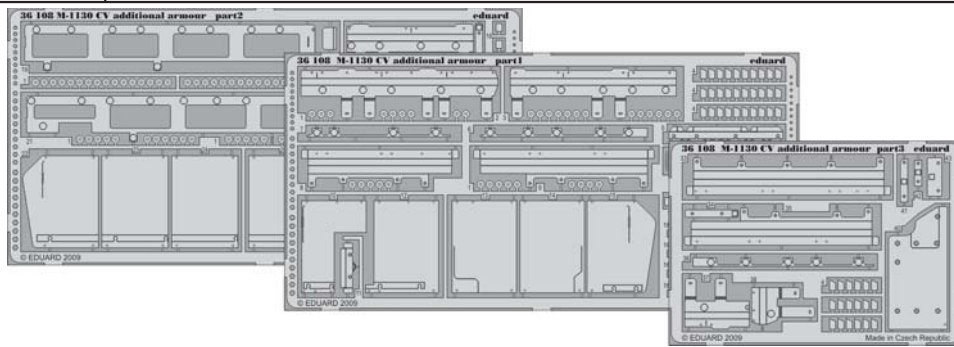










M-1130 CV additional armour




eduard

36 108

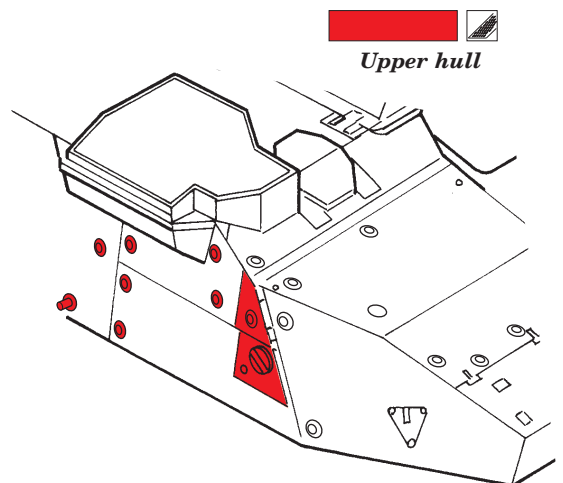
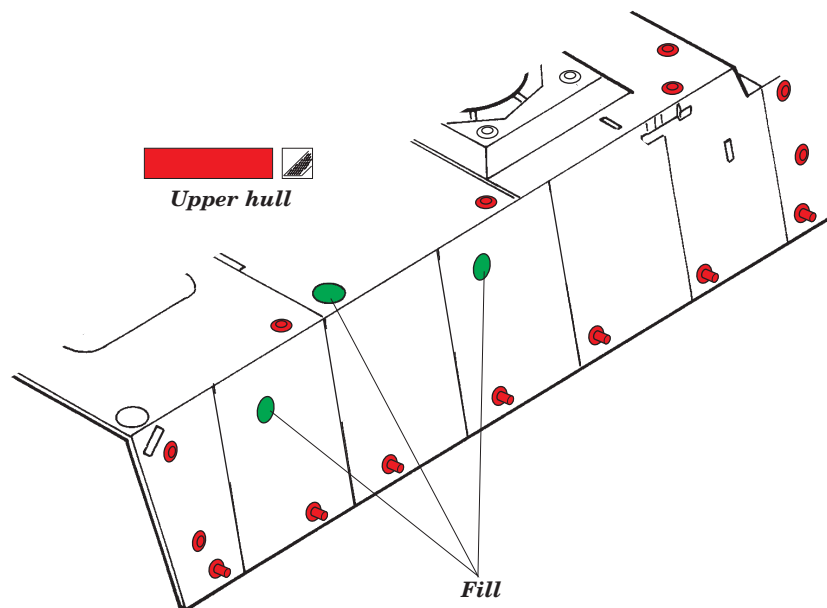
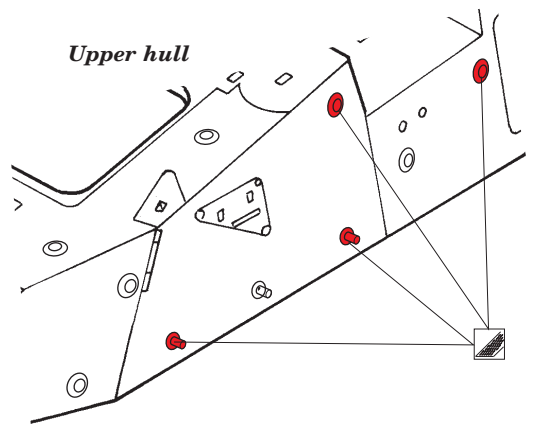
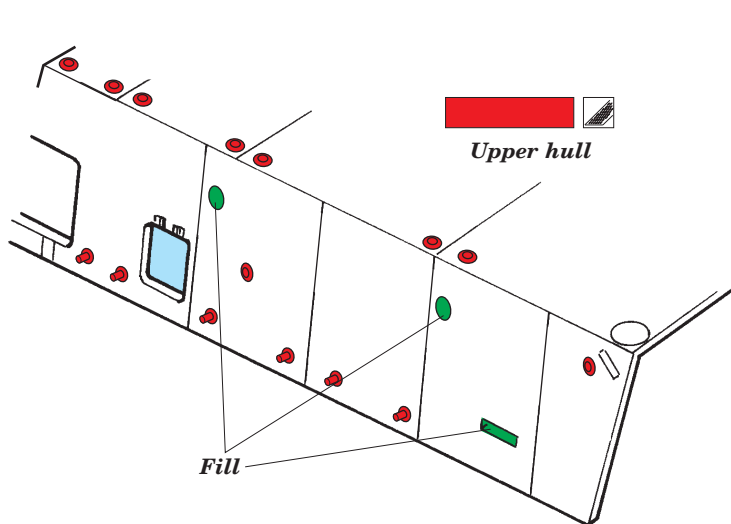
1/35 scale detail set for Trumpeter No.00397 • sada detailů pro model 1/35 Trumpeter 00397

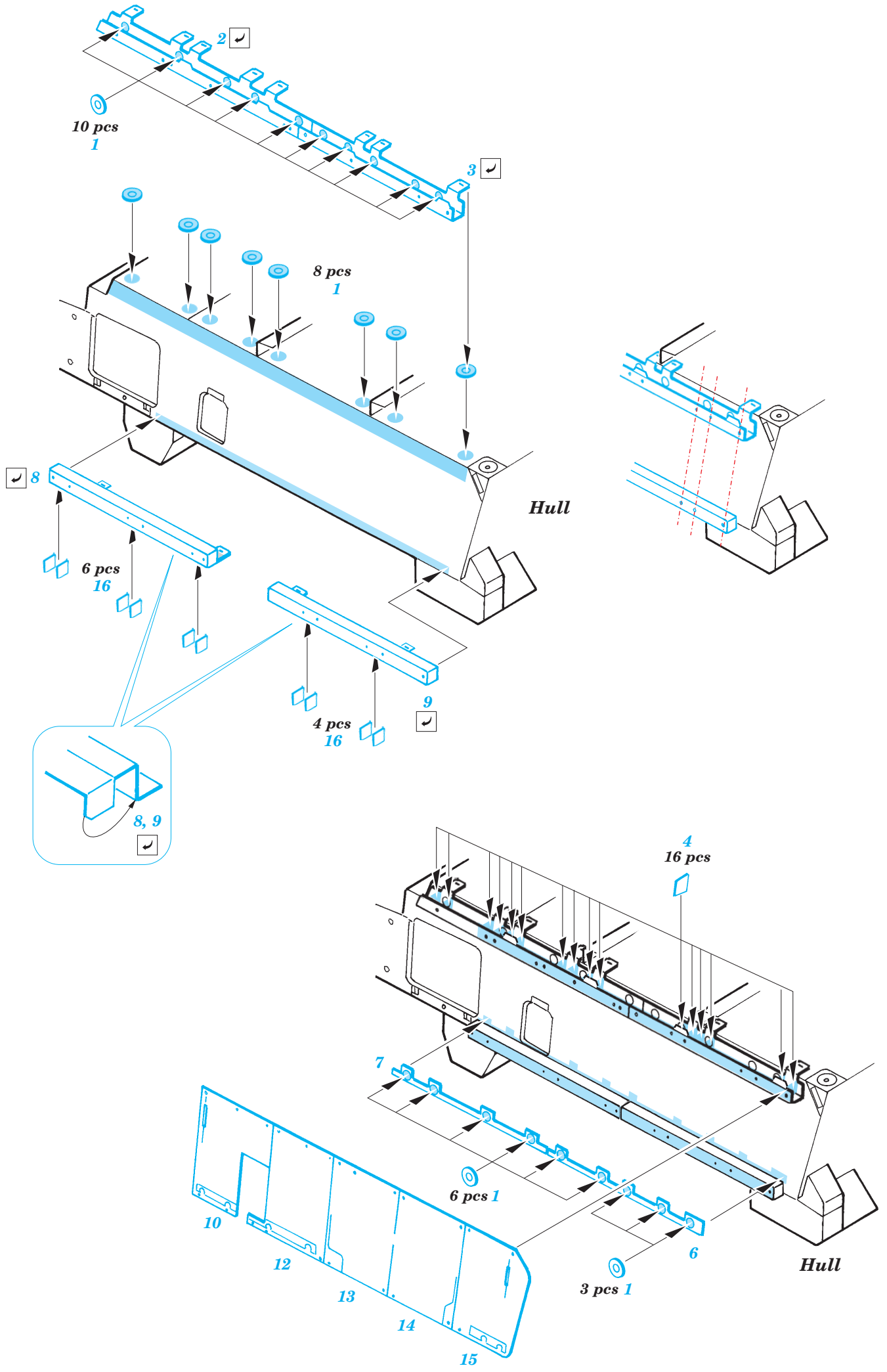


-  APPLY EXPRESS MASK AND PAINT BEFORE GLUING
POUŽIT EXPRESS MASK NABARVIT PŘED SLEPENÍM
-  SYMETRICAL ASSEMBLY
SYMETRICKÁ MONTÁŽ
-  REMOVE
ODSTRANIT
-  GRIND
OBROUSIT
-  DRILL HOLE
VRTAT OTVOR
-  BEND
OHNOUT
-  OPTION
VOLBA
-  REPLACE
NAHRADIT

-  ORIGINAL KIT PARTS
PŮVODNÍ DÍLY STAVEBNICE
-  PHOTO-ETCHED PARTS
LEPTANÉ DÍLY
-  PARTS TO BE REMOVED
DÍLY K ODSTRANĚNÍ
-  FILL
TMELIT

*For further detail sets look for [eduard 36 107 M-1130 CV](#),
[36 105 M-1130 CV Mounted rack and belts](#), [36 103 M-1130 SLAT Armor](#)
 and [36 001 Stryker storage belts](#)
 (not included in this set)*





A

Photo etched part Eduard 36 107
Correct position for SLAT Armor

