

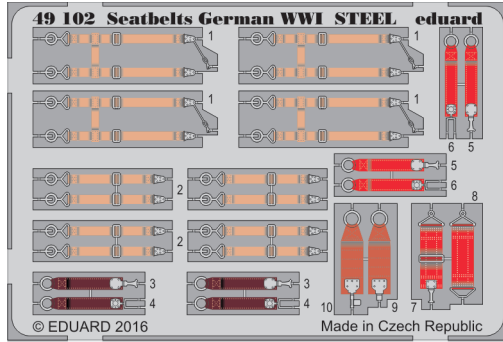


# Seatbelts German WWI STEEL

eduard

49 102

1/48 scale detail set • sada detailů pro model 1/48



- APPLY EXPRESS MASK AND PAINT BEFORE GLUING  
POUŽIT EXPRESS MASK NABARVIT PŘED SLEPENÍM
- SYMMETRICAL ASSEMBLY  
SYMETRICKÁ MONTÁŽ
- REMOVE  
ODSTRANIT
- GRIND  
OBROUSIT
- DRILL HOLE  
VRTAT OTVOR
- BEND  
OHNOUT
- OPTION  
VOLBA
- REPLACE  
NAHRADIT
- 1** COLORED ETCHED PARTS  
LEPTANÉ BAREVNÉ DÍLY
- 1** ETCHED PARTS  
LEPTANÉ NEBAREVNÉ DÍLY
- 1** ORIGINAL KIT PARTS  
PŮVODNÍ DÍLY STAVEBNICE

ORIGINAL KIT PARTS  
PŮVODNÍ DÍLY STAVEBNICE      PHOTO-ETCHED PARTS  
LEPTANÉ DÍLY      PARTS TO BE REMOVED  
DÍLY K ODSTRANĚNÍ      FILL  
TMELIT

**I.** **A**

**4 sets**

**B**

**2 pcs.**

**4 sets**

**II.**

**C**

**2 sets**

**seat**

**D**

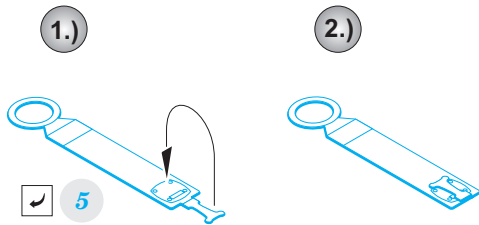
**2 sets**

**seat**

*Fokker Aviatik and other early planes in 1914-1916*

### III.

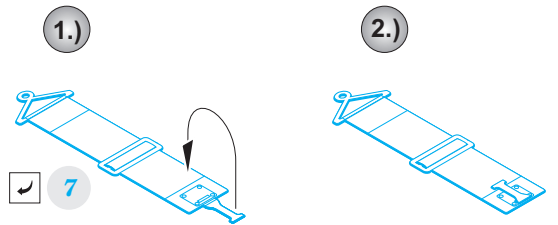
**E**



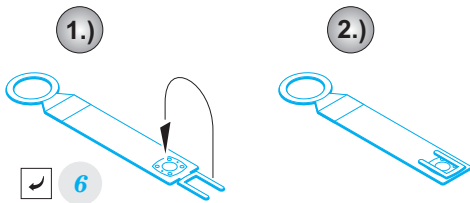
2 sets

### IV.

**G**

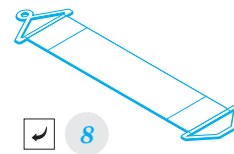


**F**

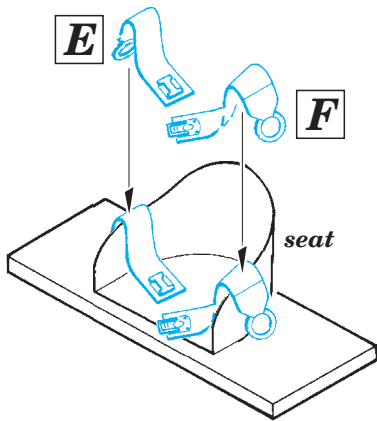


2 sets

**H**



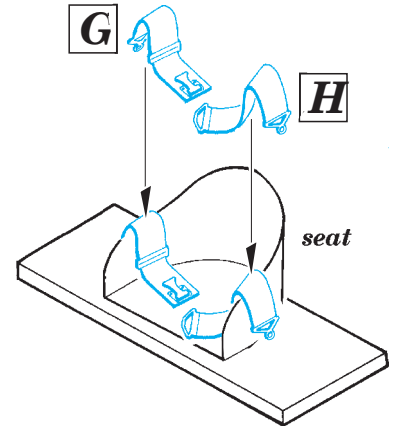
**E**



seat

*Fokker Aviatik and other early planes in 1914-1916*

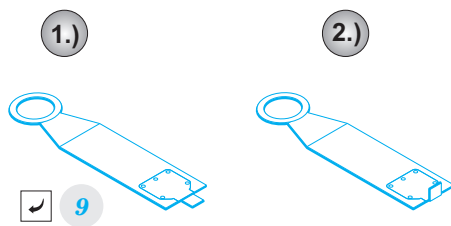
**G**



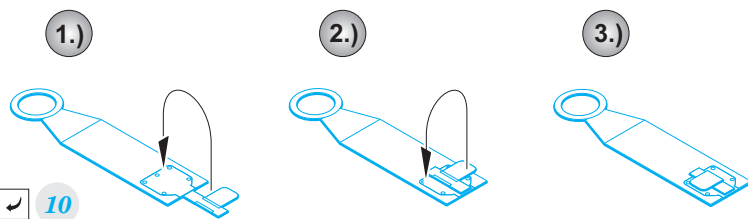
seat

### V.

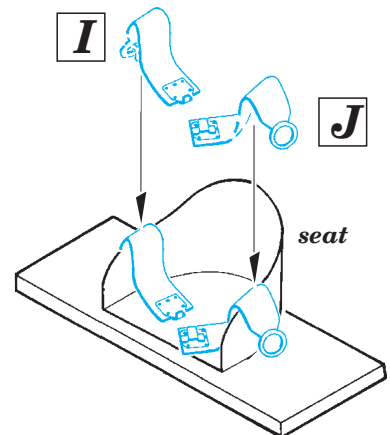
**I**



**J**



**I**



seat

*Albatros C.III  
Hannover CL.III  
and other multi seat  
planes 1914-1918*