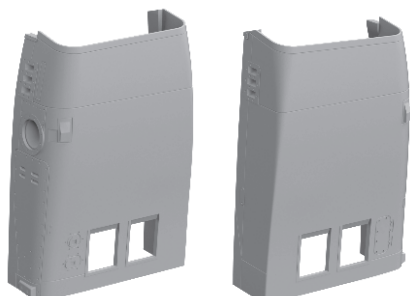


648 434 MiG-23MF engine air intakes

for Trumpeter/Eduard kit - pro stavebnici Trumpeter/Eduard



1/48 scale

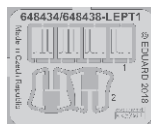


R41

R42

R43

R44



COLOURS

GSI Creos (GUNZE)		Mr.COLOR SUPER METALLIC	
AQUEOUS	Mr.COLOR		
[H 8]	[C 8]	[SM01]	SUPER CHROME
Mr.METAL COLOR		STAINLESS	
		[MC213]	

This product contains metal and resin detail parts for upgrading scale plastic models. When selecting this set make sure that it is for the kit mentioned in product name as these sets are made specifically for that kit. When upgrading the model some cutting or corrections may be necessary for parts to fit accurately. **WARNING!** This set contains small and sharp parts. Work carefully in a ventilated and well-lit room. Safety glasses are recommended. This product is not suitable for children below 14 years of age.

Tento výrobek obsahuje lepané a odlévané detaily pro úpravu a vylepšení plastického modelu. Při výběru sady kovových detailů zkontrolujte, zda je určena pro model, který chcete upravit. Model, pro který je sada určena, je uveden v názvu výrobku. Pro přesnou aplikaci kovových a odlévaných dílů může být zapotřebí upravit díly upravovaného modelu. **POZOR!** Sada obsahuje malé ostré díly. Pracujte ve větrané a dobře osvětlené místnosti. Doporučujeme použití ochranných brýlí. Tento výrobek není vhodný pro děti mladší 14 let.



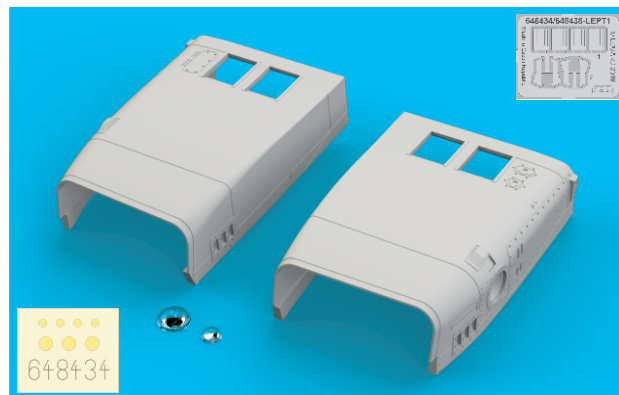
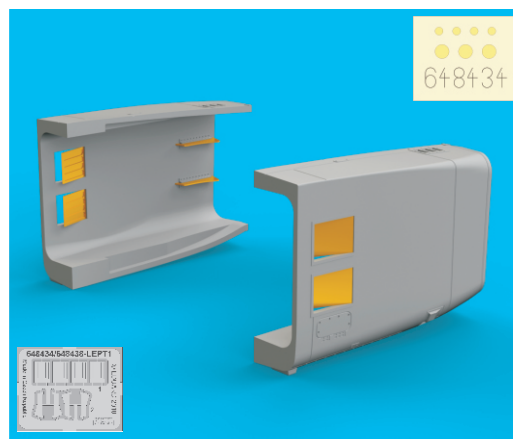
435 21 Obrnice 170
Czech Republic

www.eduard.com
14,95



648 434 MiG-23MF engine air intakes 1/48

for Trumpeter/Eduard kit - pro stavebnici Trumpeter/Eduard



BEST BRASS RESIN AROUND!

-  REMOVE
ODSTRANIT
-  BEND
OHNOUIT
-  GRIND
OBROUSIT
-  OPTION
VOLBA
-  DRILL HOLE
VRTÁT OTVOR
-  REPLACE
NAHRADIT
-  SYMMETRICAL ASSEMBLY
SYMETRICKÁ MONTÁŽ
-  SCRIBE THE PANEL AND HOLES
RYTI
-  REVERSE SIDE
OTOČIT



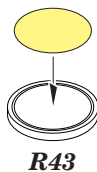
plastic C32 



648434

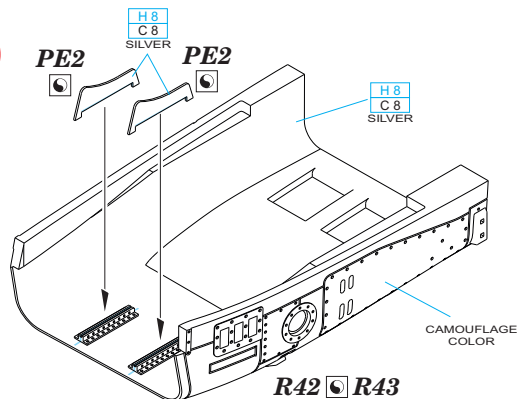


R44



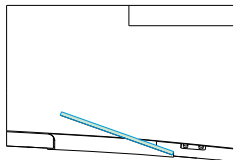
R43

1

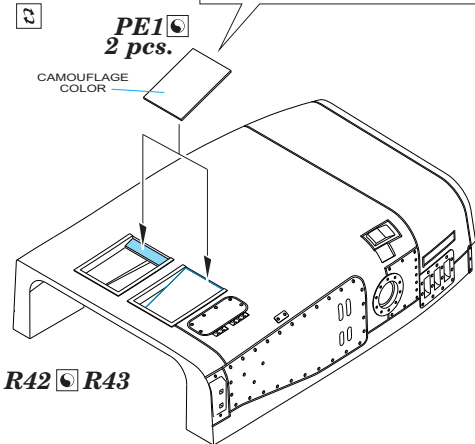


R42 

**CORRECT POSITION
OF PE1**



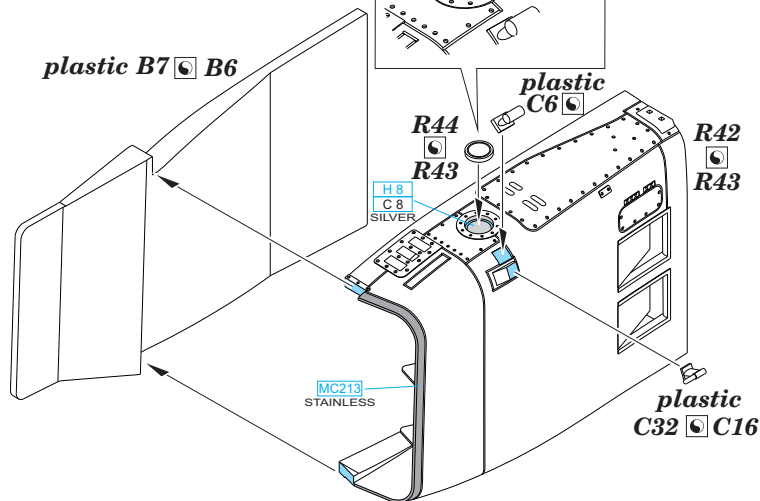
2



R42 

3

plastic B7 



plastic
C32 