

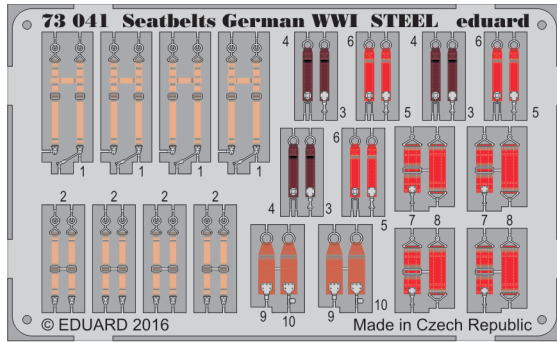


Seatbelts German WWI STEEL

eduard

73 041

1/72 scale detail set • sada detailů pro model 1/72



- APPLY EXPRESS MASK AND PAINT BEFORE GLUING
POUŽIT EXPRESS MASK NABARVIT PŘED SLEPENÍM
- SYMETRICAL ASSEMBLY
SYMETRICKÁ MONTÁŽ
- REMOVE
ODSTRANIT
- GRIND
OBROUSIT
- DRILL HOLE
VRTAT OTVOR
- BEND
OHNOUT
- OPTION
VOLBA
- REPLACE
NAHRADIT
- 1** COLORED ETCHED PARTS
LEPTANÉ BAREVNÉ DÍLY
- 1** ETCHED PARTS
LEPTANÉ NEBAREVNÉ DÍLY
- 1** ORIGINAL KIT PARTS
PŮVODNÍ DÍLY STAVEBNICE

ORIGINAL KIT PARTS
PŮVODNÍ DÍLY STAVEBNICE

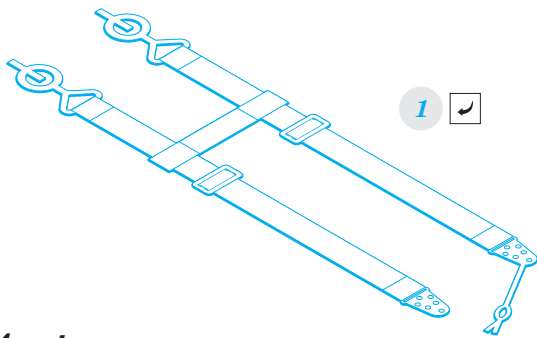
PHOTO-ETCHED PARTS
LEPTANÉ DÍLY

PARTS TO BE REMOVED
DÍLY K ODSTRANĚNÍ

FILL
TMELIT

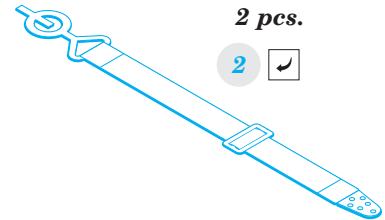
I.

A



4 sets

B

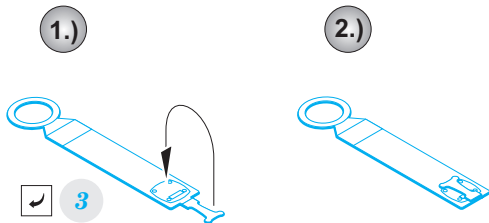


2 pcs.

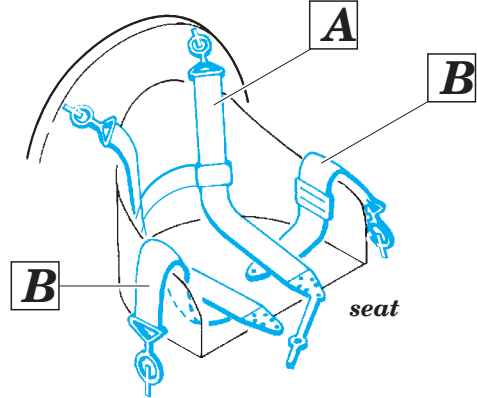
4 sets

II.

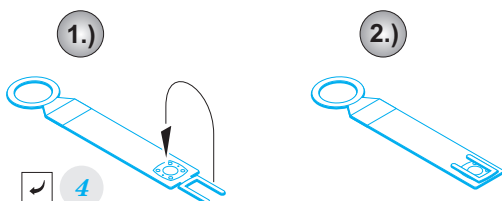
C



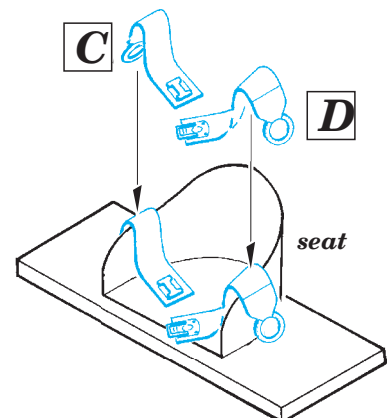
3 sets



D



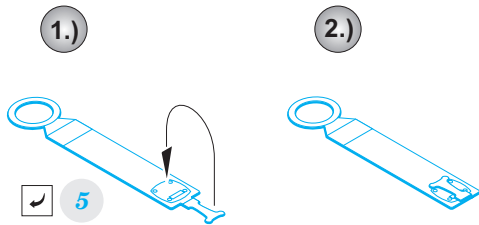
3 sets



*Fokker
Aviatik
and other early planes
in 1914-1916*

III.

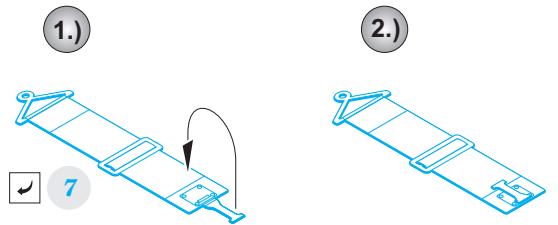
E



3 sets

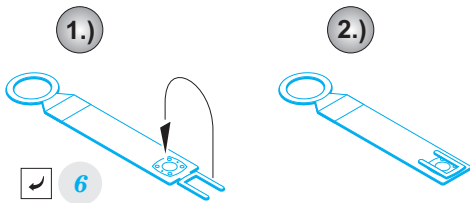
IV.

G



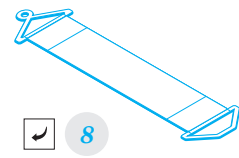
4 sets

F



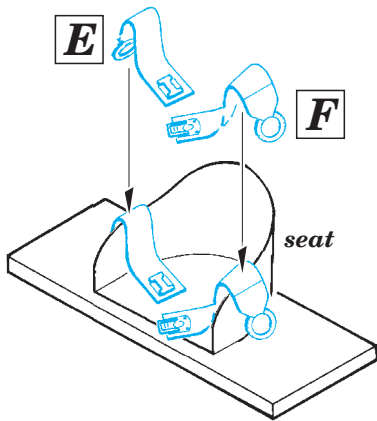
3 sets

H



4 sets

E

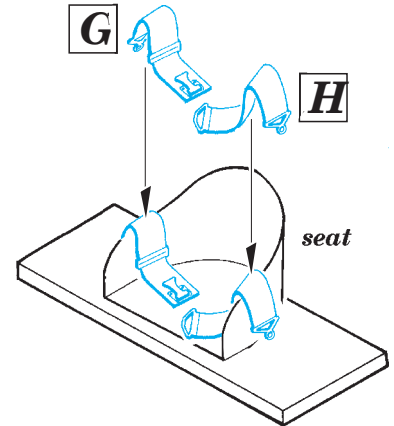


seat

F

Fokker Aviatik and other early planes in 1914-1916

G

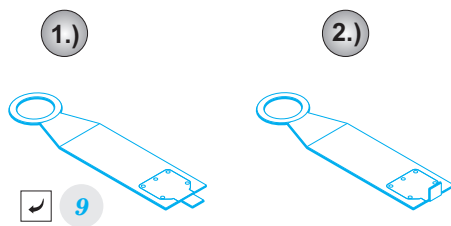


seat

H

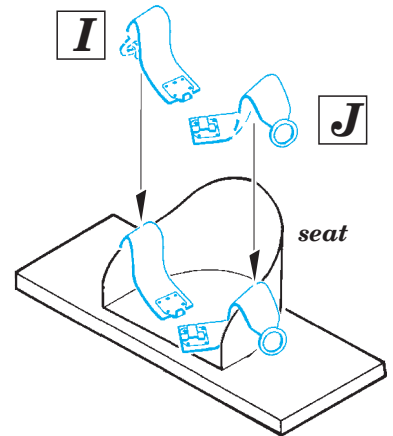
V.

I



2 sets

I

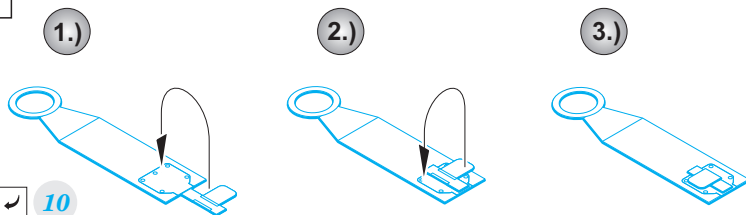


seat

J

*Albatros C.III
Hannover CL.III
and other multi seat
planes 1914-1918*

J



2 sets