

GERMAN WWII FIGHTER

1/48 SCALE PLASTIC KIT

ProfiPACK
edition

#8189



INTRO

With this kit, we offer the Fw 190 D-9 of late production, notably with the tail surfaces of the Ta 152. These tail surfaces are documented photographically on two machines - Black '6', W.Nr.500 645 and Brown '4', W.Nr.500 647. From written descriptions only, it is further assumed that W.Nr.500 648 could also have been equipped with these tail surfaces, which, as Yellow '6', served with III./KG(J) 27.

These tail surfaces found their way to some Doras apparently through a lack of standard units. These were assembled by sub-contractors, and delivered near final assembly. It is very likely that due to problems in logistics, there developed a shortage of these components at the Mimetall factory (Mitteldeutsche Metallwerke GmbH) in Erfurt. So that production did not need to be interrupted, tail units intended for the Ta 152 were mounted instead, the production of which was being prepared for at Erfurt. From the numbers of aircraft that had this anomaly, it can be safely assumed that the substitution was a very short duration one, probably only a one day affair.

In the reconstruction of color schemes, we consulted mainly the book 'Fw 190D Camouflage and Markings' by JaPo Publishing, which is an exhaustive study of the subject as it pertains to the Dora. We also arrived at an interesting theory regarding the painting of the bottom surfaces of the wing with the interior color RLM 66, or another base paint, inspired by the magazine REVI No.80.

Technical Specifications

Lenght	10.20 m	Max. takeoff weight	4,840 kg
Wingspan	10.50 m	Maximum speed	685 km/h at 6.600 m
Height	3.35 m	Range	835 km
Wing area	18.30 m ²	Service ceiling	12.000 m
Empty weight	3,490 kg	Rate of climb	17 m/s
Loaded weight	4,350 kg	Wing loading	238 kg/m ²
Powerplant	1x Junkers Jumo 213 A-1 12-cylinder inverted piston engine		

Armament

Guns	2x 13 mm MG 131 machine guns with 475 rounds per gun in fuselage
	2x 15 mm MG 151 cannon with 250 rounds per gun in the wing root
Bombs	1x 500 kg SC 500 bomb

ÚVODEM

V této stavebnici vám přinášíme Focke-Wulfy Fw 190 D-9 z pozdější fáze výroby, s důrazem na Dory s ocasionními plochami z Ta 152.

Tyto ocasionní plochy jsou fotograficky zdokumentovány u dvou strojů – „černá 6“ W.Nr. 500 645 a „hnědá 4“ W.Nr. 500 647. Usuzuje se, že je mohl mít také pouze z písemných záznamů známý stroj W.Nr. 500 648, který jako „žlutá 6“ sloužil u III./KG(J) 27.

Na Dorách D-9 se tyto ocasionní plochy ocitly zřejmě kvůli nedostatku standardních ocasionních ploch. Tato část byla vyráběna subdodavateli a dodávána ke konečné montáži. Je velmi pravděpodobné, že díky logistickým problémům vznikl nedostatek této sestavy v továrně Mimetall (Mitteldeutsche Metallwerke GmbH) v Erfurtu. Aby se nemusela výroba přerušovat, namontovány byly sestavy určené pro Ta 152, jejichž výroba se ve stejné továrně v Erfurtu připravovala. Z počtu známých letounů, které tuto „anomálii“ měly, lze usuzovat, že šlo o velmi krátký, zřejmě jednodenní výpadek zásobování.

V rekonstrukcích zbarvení vycházíme zejména z publikací Fw 190 D camouflage & markings vydavatelství JaPo Publishing, které se zbarvování Dor rozsáhle a systematicky věnují. Přihlédli jsme také k zajímavé teorii o zbarvení spodní plochy křídla interiérovou barvou RLM 66 či jinou základovou barvou, již přinesl časopis REVI č. 80.

Technické parametry

Délka	10,20 m	Maximální hmotnost	4840 kg
Rozpětí	10,50 m	Maximální rychlost	685 km/h v 6600 m
Výška	3,35 m	Dolet	835 km
Nosná plocha	18,30 m ²	Dostup	12000 m
Hmotnost prázdného letounu	3490 kg	Stoupavost	17 m/s
Vzletová hmotnost	4350 kg	Plošné zatížení	238 kg/m ²
Pohonná jednotka	1x Junkers Jumo 213 A-1, řadový invertní dvanáctiválec		

Výzbroj

Hlavní výzbroj	2x 13 mm MG 131 kulomet s 475 náboji v trupu letadla
	2x 15 mm MG 151 kanony s 250 náboji v kořeni křídla
Pumy	1x 500 kg puma SC 500

ATTENTION



UPOZORNĚNÍ



ACHTUNG



ATTENTION



注意



Carefully read instruction sheet before assembling. When you use glue or paint, do not use near open flame and use in well ventilated room. Keep out of reach of small children. Children must not be allowed to suck any part, or pull vinyl bag over the head.



Před započítím stavby si pečlivě prostudujte stavební návod. Při používání barev a lepidla pracujte v dobře větrané místnosti. Lepidla ani barvy nepoužívejte v blízkosti otevřeného ohně. Model není určen malým dětem, mohlo by dojít k požití drobných dílů.

INSTRUCTION SIGNS * INSTR. SYMBOLS * INSTRUKTION SINNBILDEN * SYMBOLES * 記号の説明

OPTIONAL
VOLBABEND
OHNOUTOPEN HOLE
VYVRTAT OTVORSYMMETRICAL ASSEMBLY
SYMETRICKÁ MONTÁŽREMOVE
ODŘÍZNOUTREVERSE SIDE
OTOČITAPPLY EDUARD MASK
AND PAINT
POUŽÍT EDUARD MASK
NABARVIT

PARTS



DÍLY



TEILE

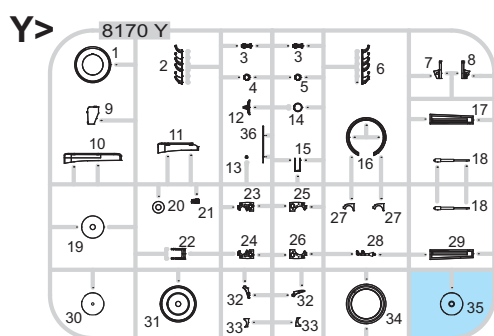
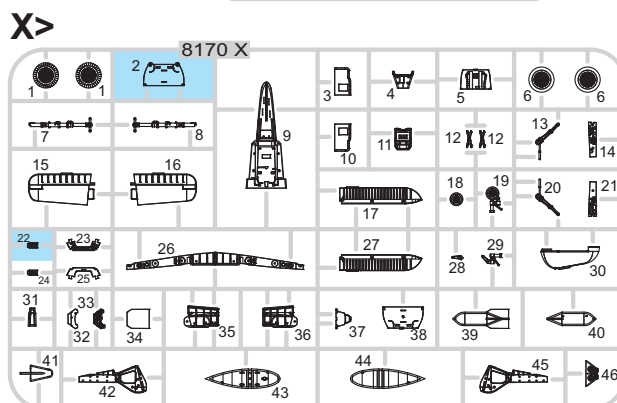
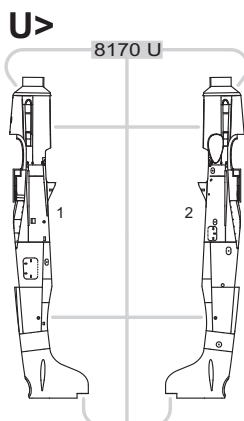
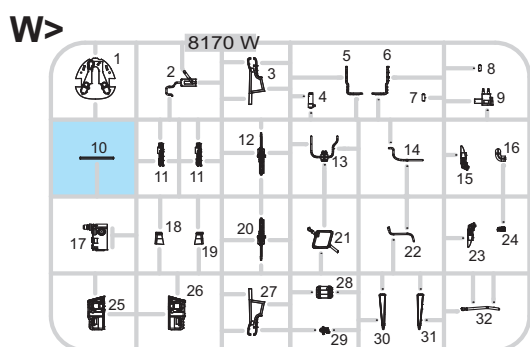
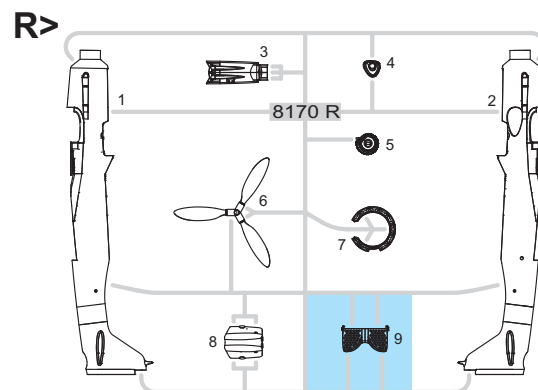
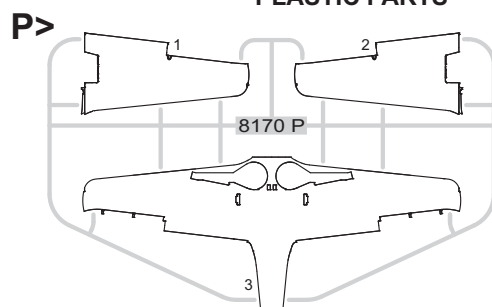
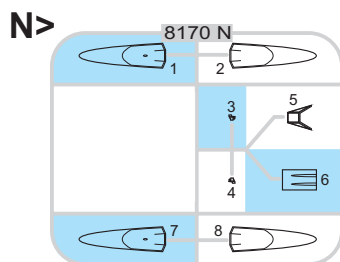
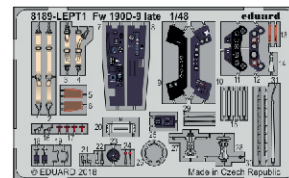


PIÈCES



部品

PLASTIC PARTS

PE -
PHOTO ETCHED
DETAIL PARTS

-Parts not for use. -Teile werden nicht verwendet. -Pièces à ne pas utiliser. -Tyto díly nepoužívejte při stavbě. - 使用しない部品

COLOURS



BARVY



FARBEN



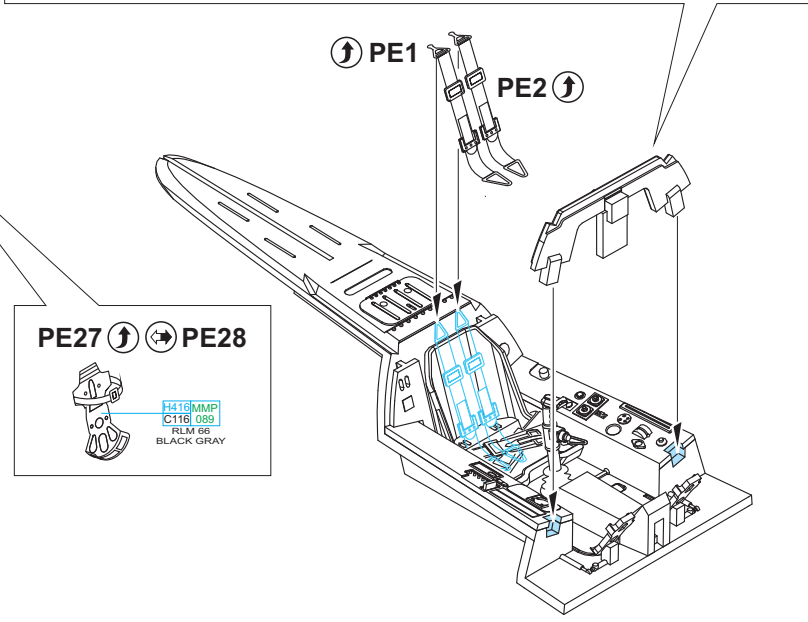
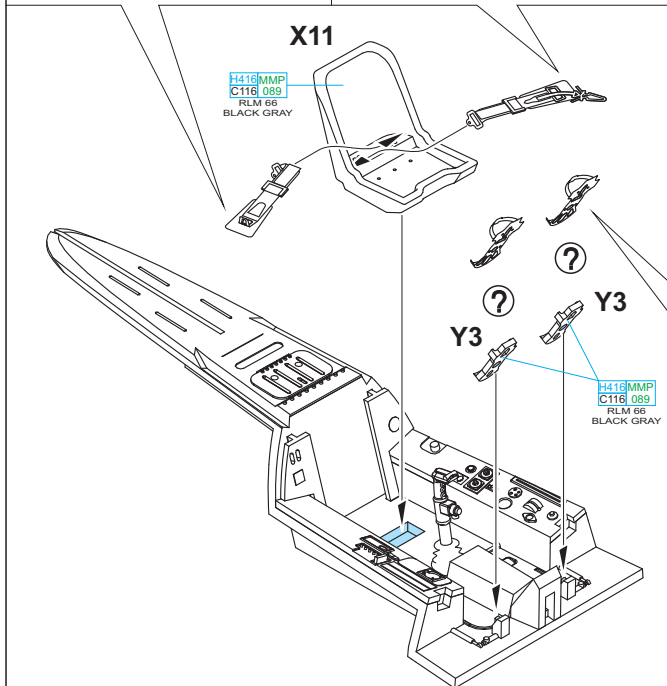
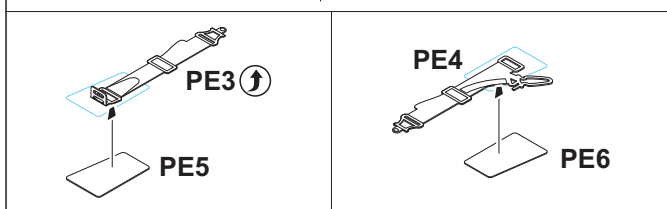
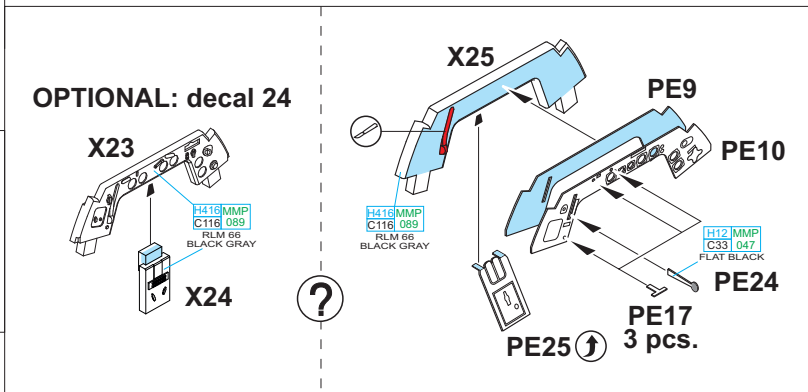
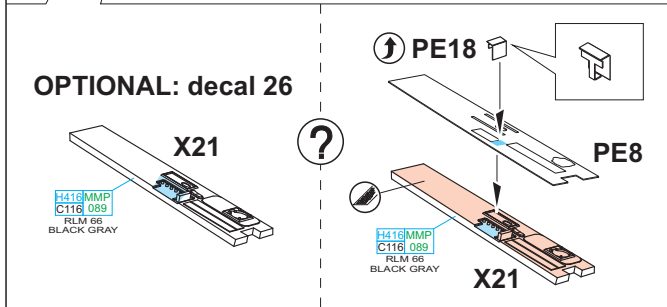
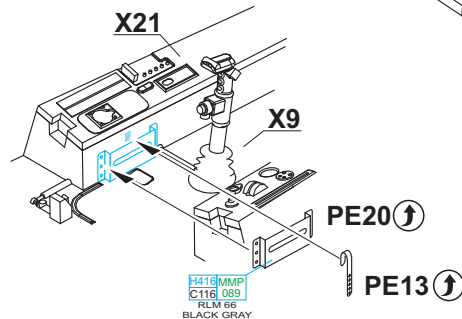
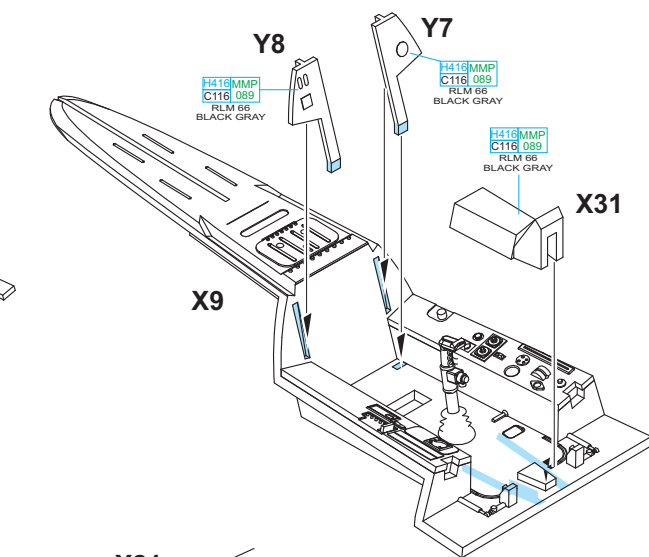
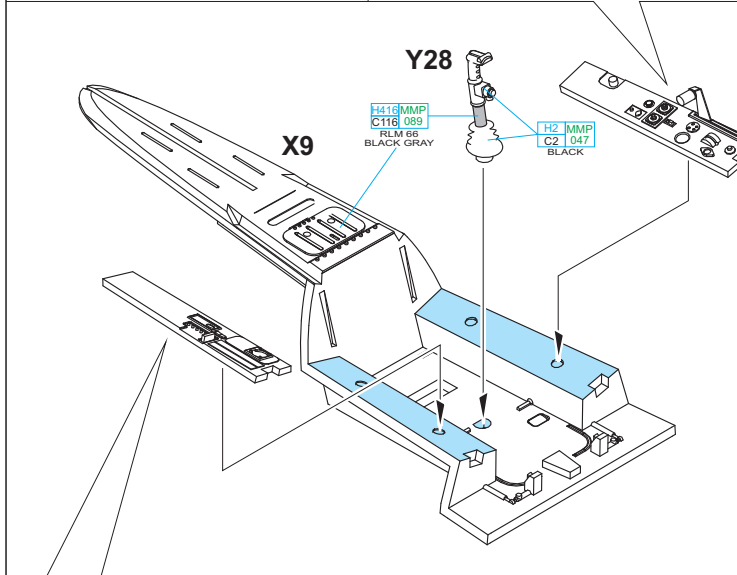
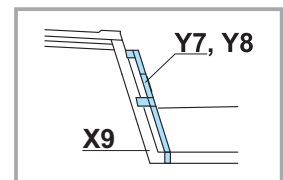
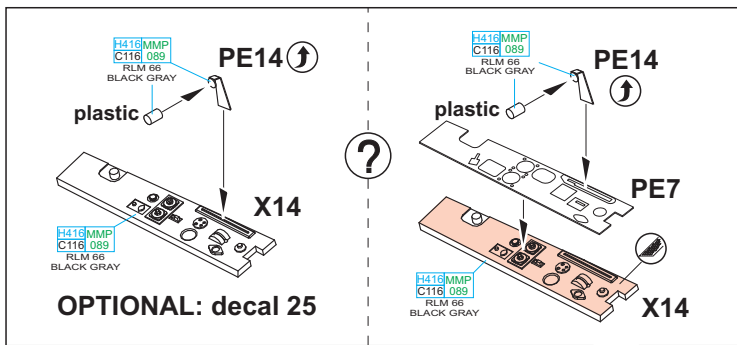
PEINTURE



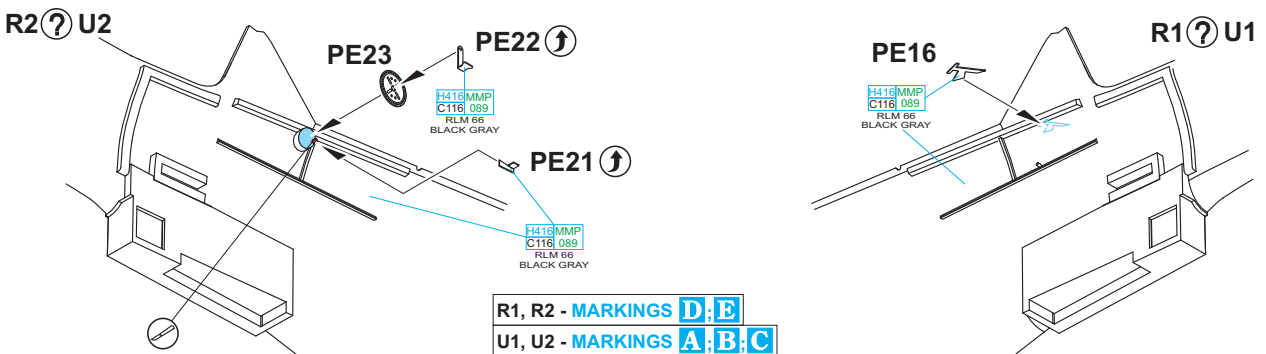
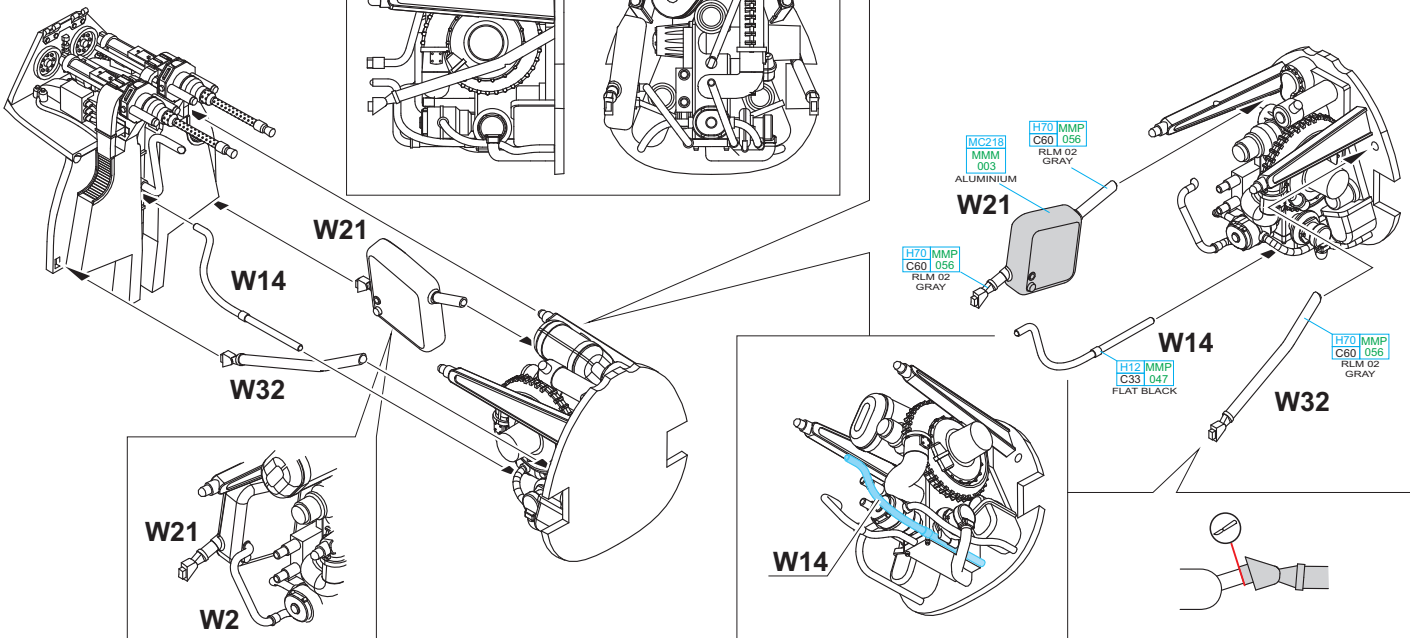
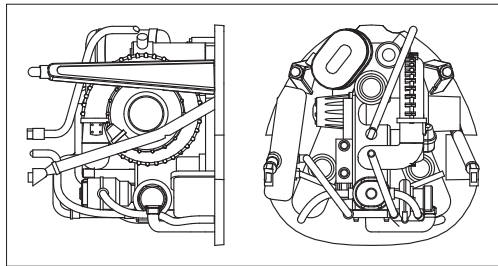
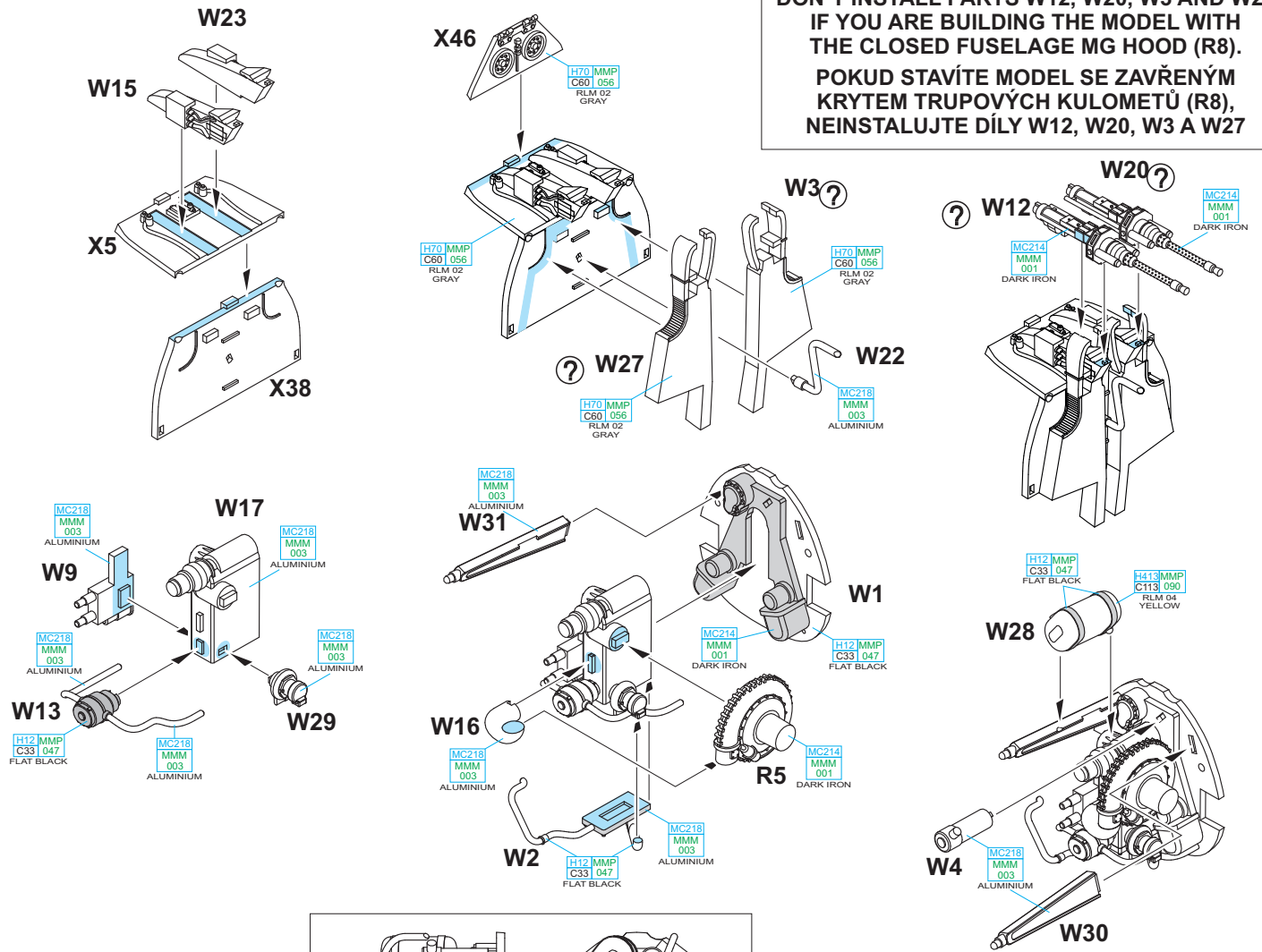
色

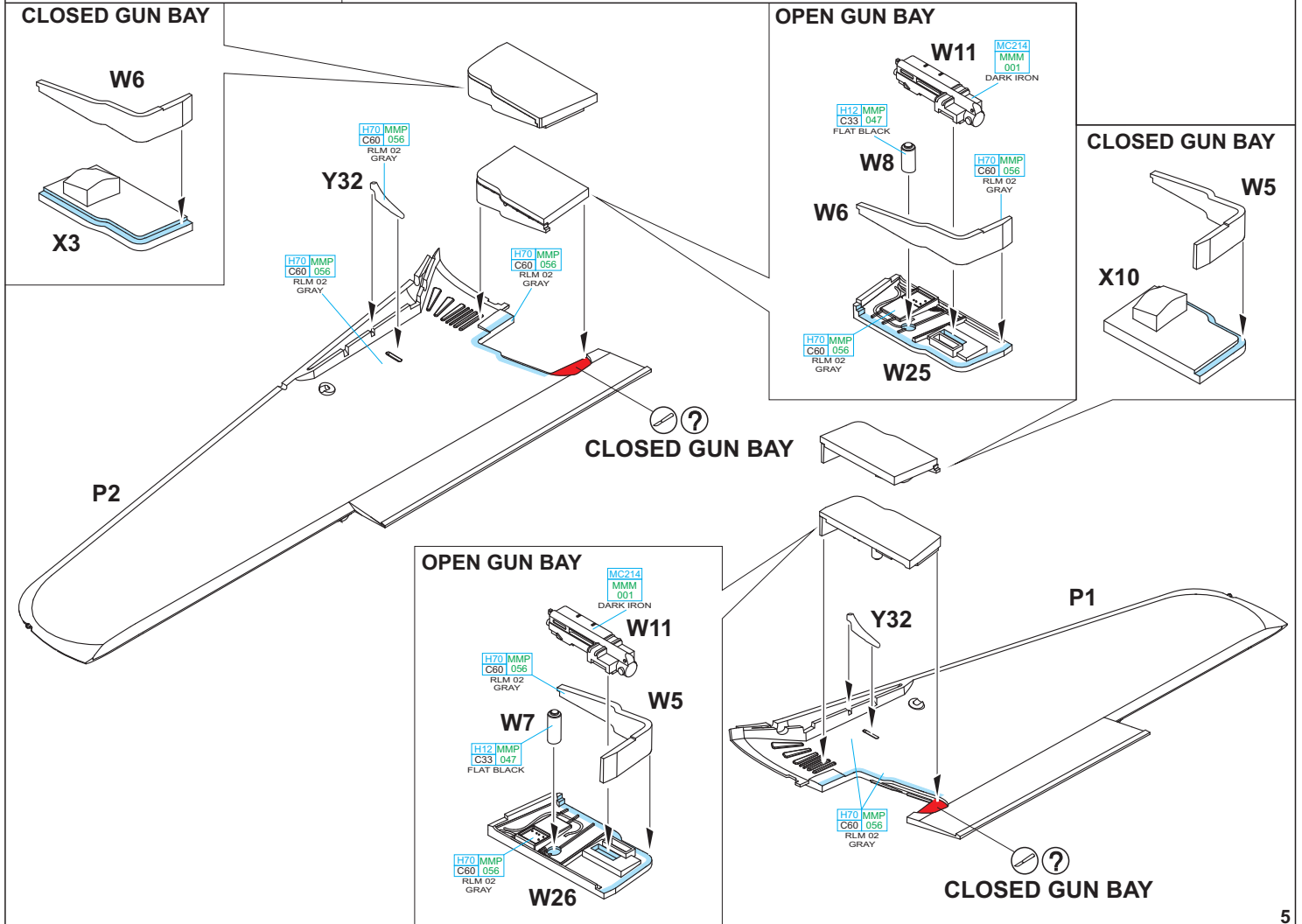
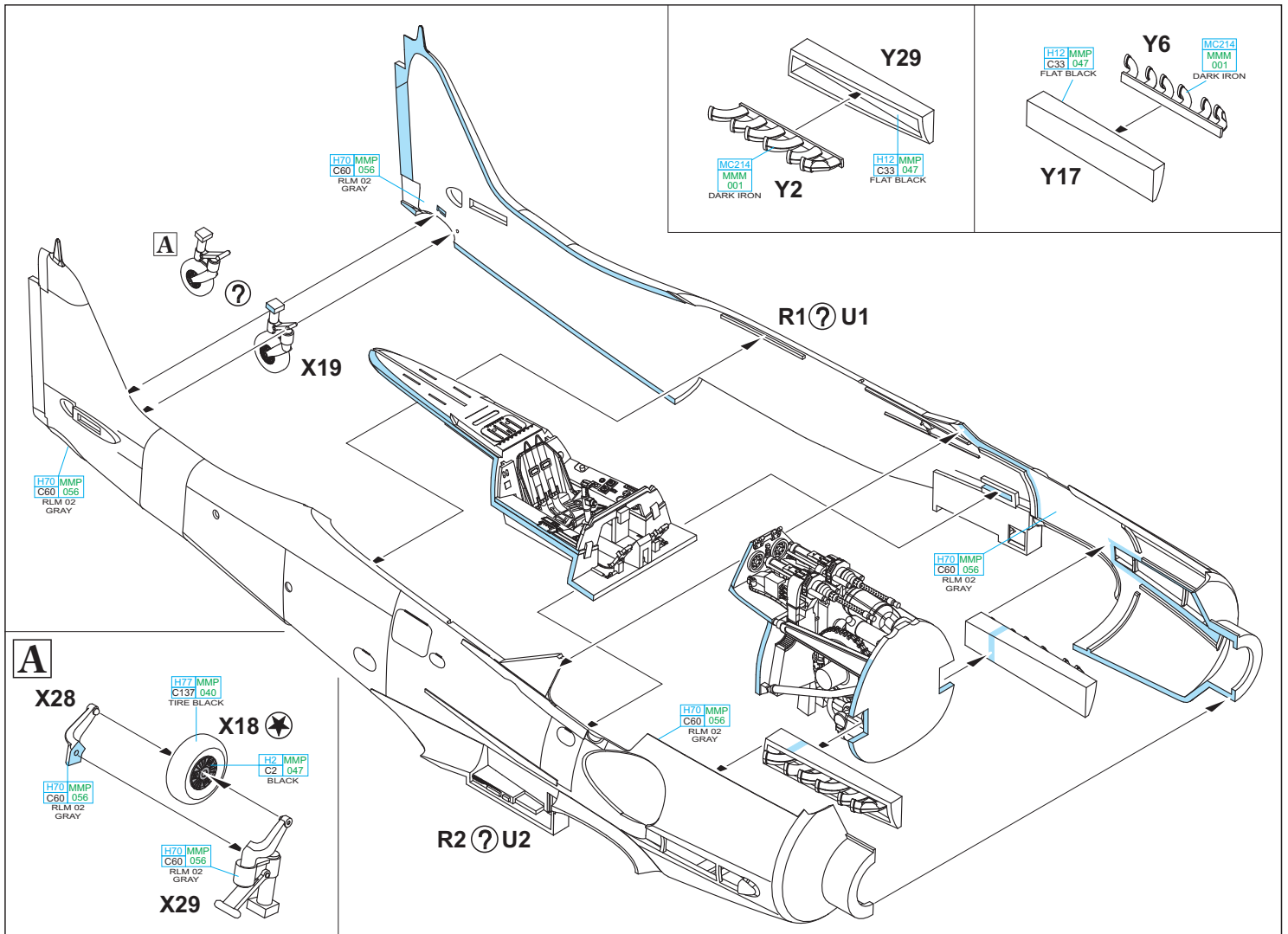
GSI Creos (GUNZE)		MISSION MODELS	
AQUEOUS	Mr.COLOR	PAINTS	
H2	C2	MMP-077	BLACK
H11	C62	MMP-001	FLAT WHITE
H12	C33	MMP-047	FLAT BLACK
H47	C41	MMP-012	RED BROWN
H65	C18	MMP-088	RLM70 BLACK GREEN
H70	C60	MMP-056	RLM02 GRAY
H77	C137	MMP-040	TIRE BLACK
H80	C54		KHAKI GREEN
H90	C47		CLEAR RED
H94	C138		CLEAR GREEN
H319	C319		LIGHT GREEN
H413	C113	MMP-090	RLM04 YELLOW

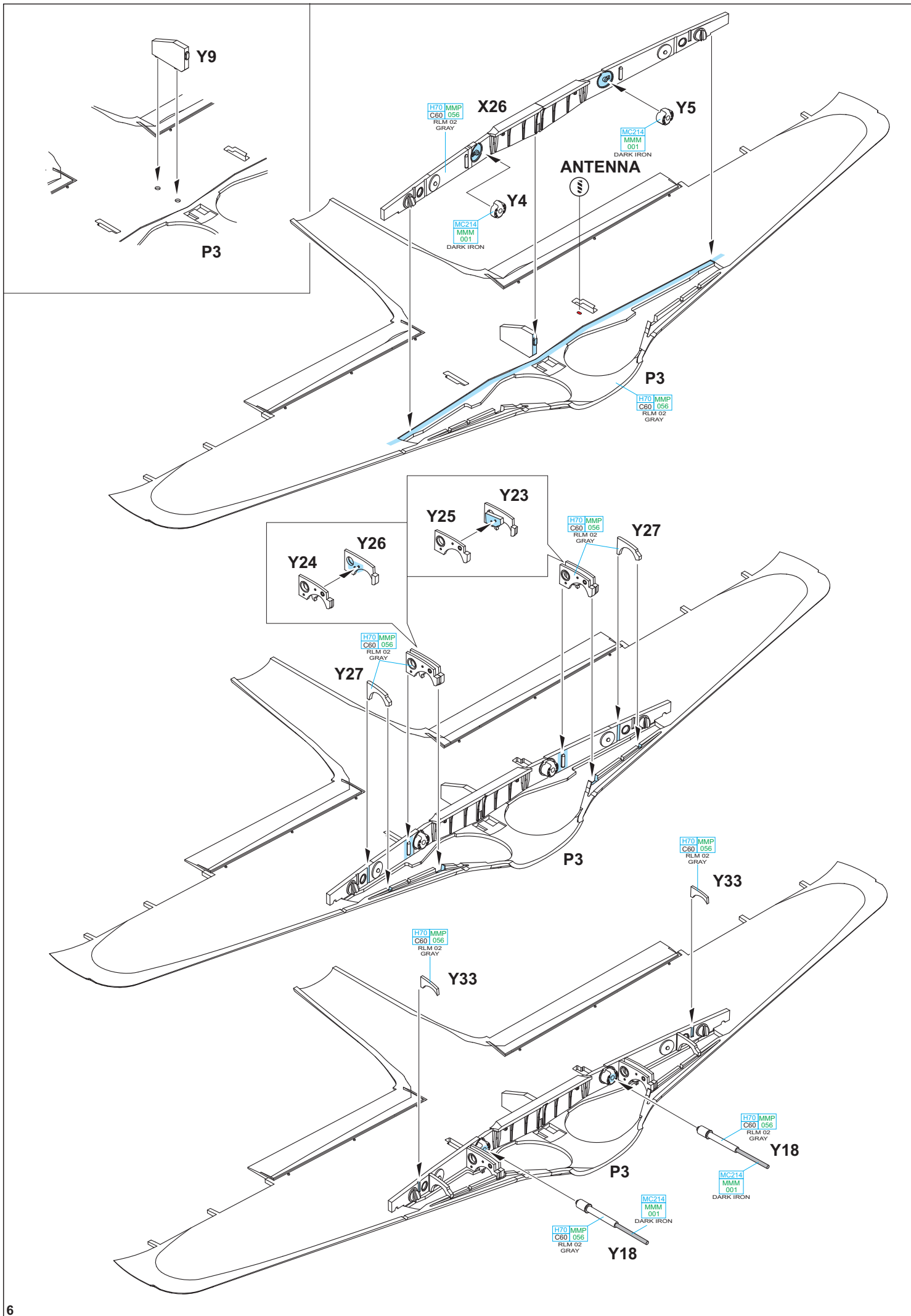
GSI Creos (GUNZE)			MISSION MODELS
AQUEOUS	Mr.COLOR	PAINTS	
H414	C114		RLM23 RED
H416	C116	MMP-089	RLM66 BLACK GRAY
H417	C117	MMP-051	RLM76 LIGHT BLUE
H421	C121		RLM81 BROWN VIOLET
H422	C122	MMP-053	RLM82 LIGHT GREEN
H423	C123		RLM83 DARK GREEN
Mr.METAL COLOR		METALLICS	
MC214		MMM-001	DARK IRON
MC218		MMM-003	ALUMINIUM
Mr.COLOR SUPER METALLIC		METALLICS	
SM01		MMC-001	SUPER CHROME

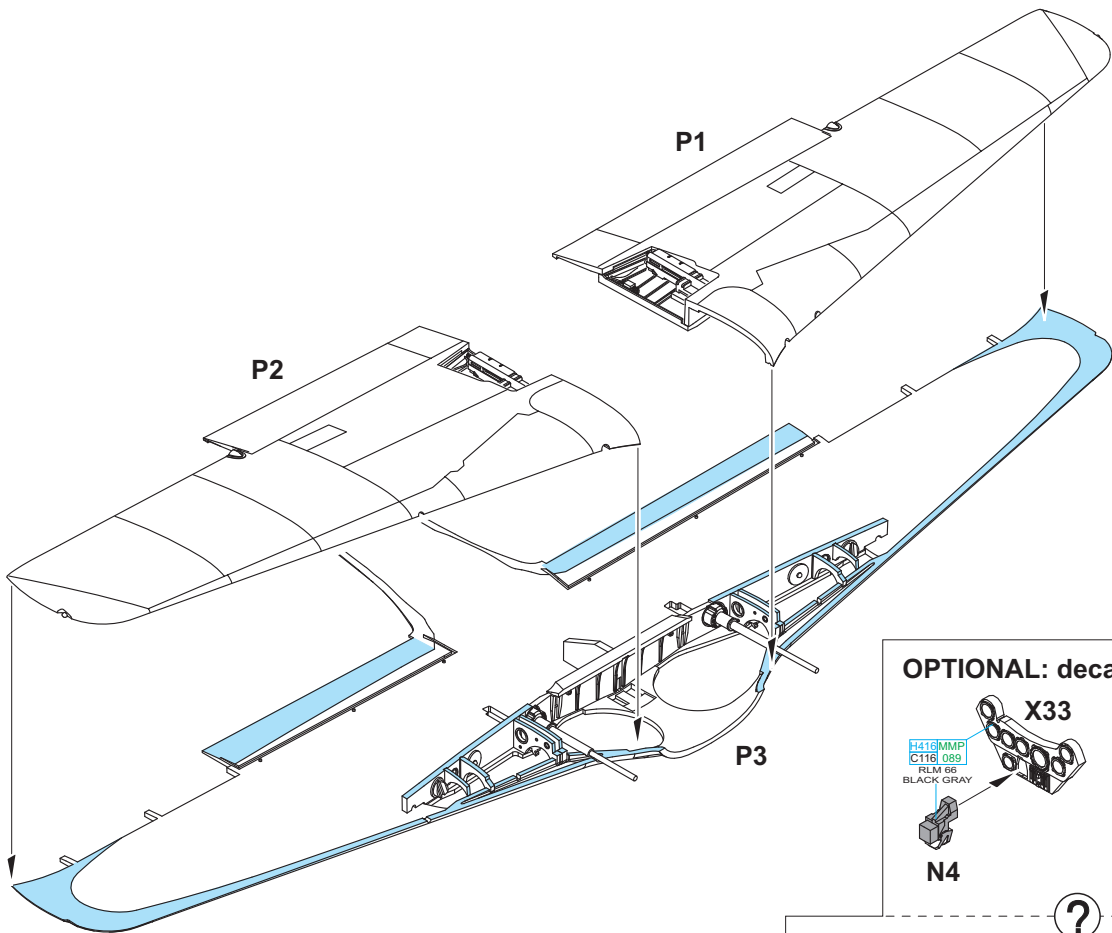


**DON'T INSTALL PARTS W12, W20, W3 AND W27 IF YOU ARE BUILDING THE MODEL WITH THE CLOSED FUSELAGE MG HOOD (R8).
POKUD STAVÍTE MODEL SE ZAVŘENÝM KRYTEM TRUPOVÝCH KULOMETŮ (R8), NEINSTALUJTE DÍLY W12, W20, W3 A W27**

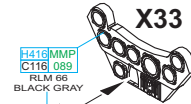




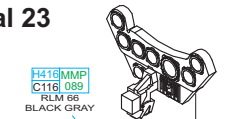




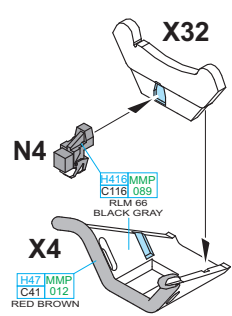
OPTIONAL: decal 23



N4

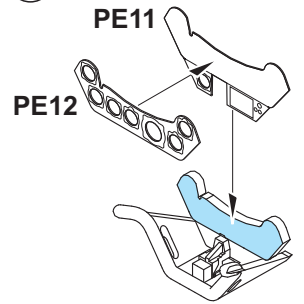


X4
H417 MMP C41 012 RED BROWN



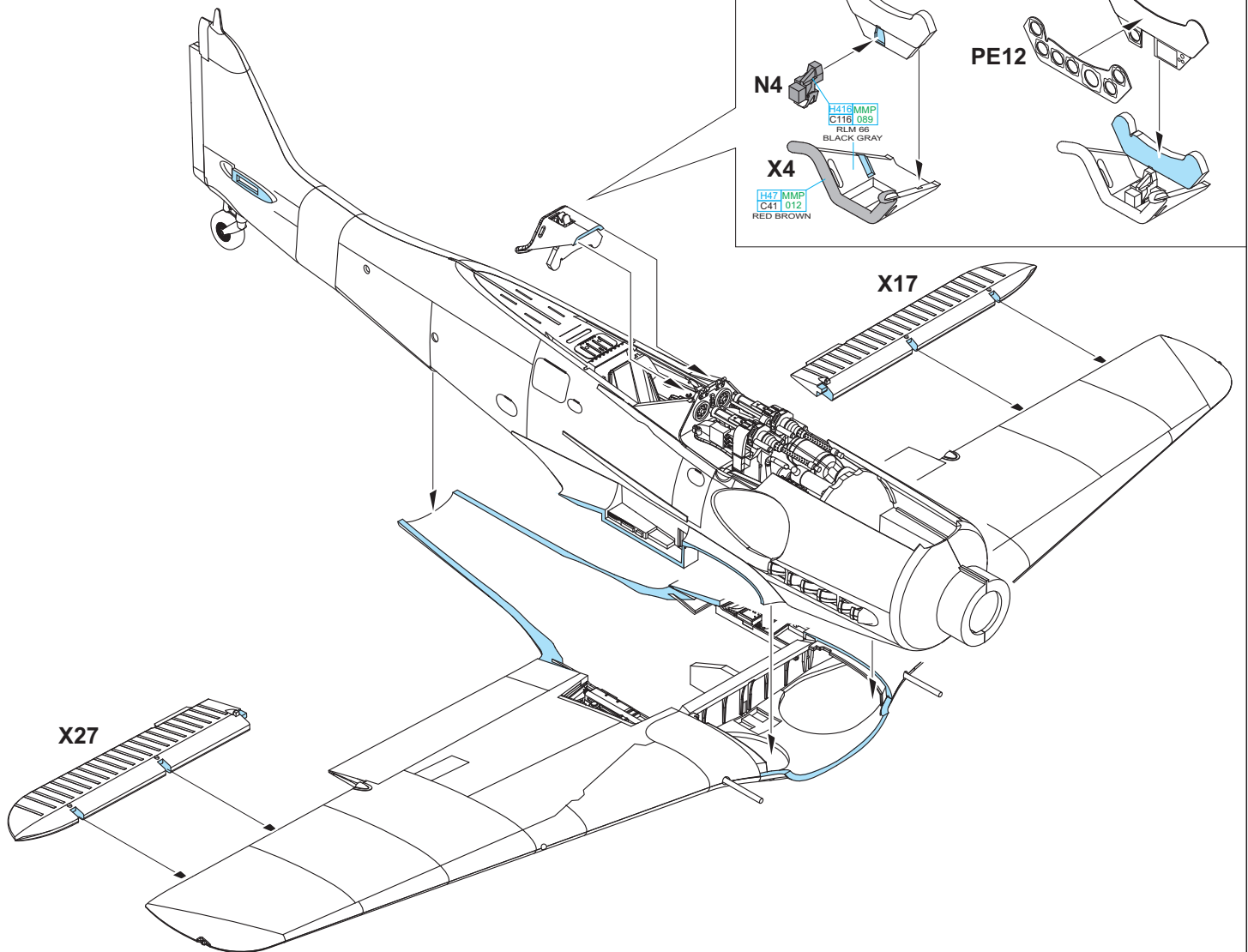
N4

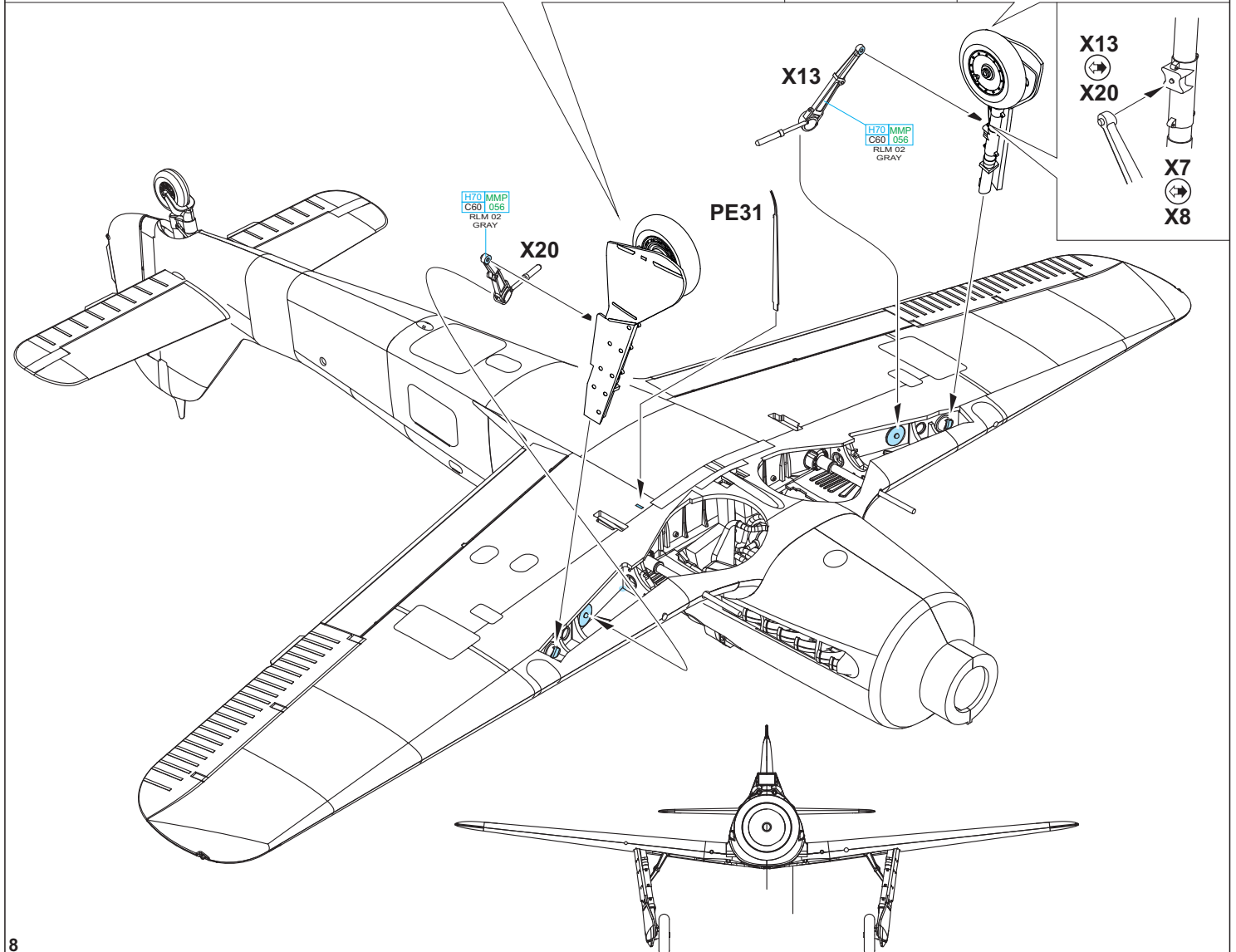
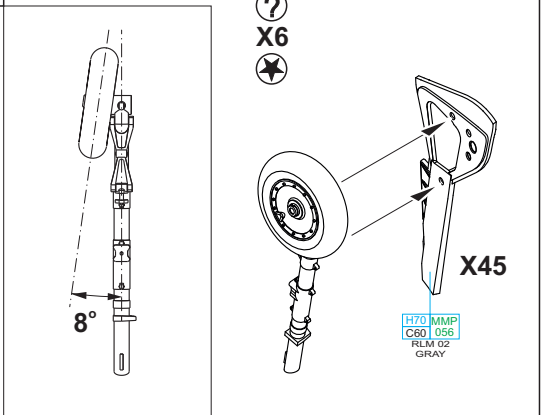
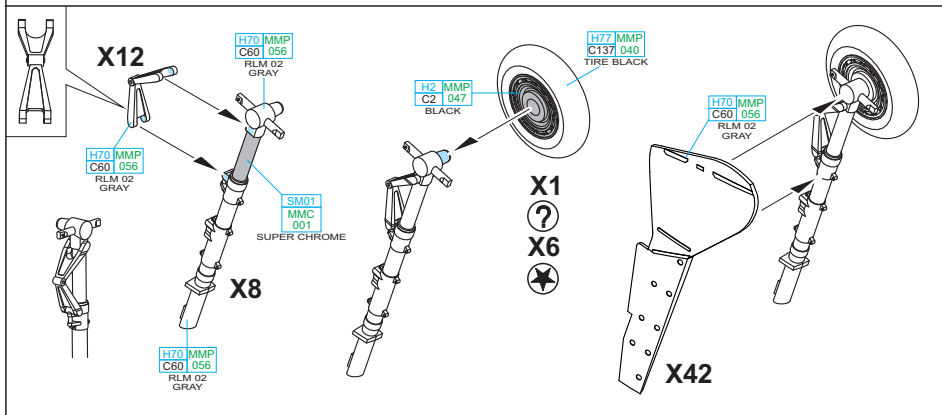
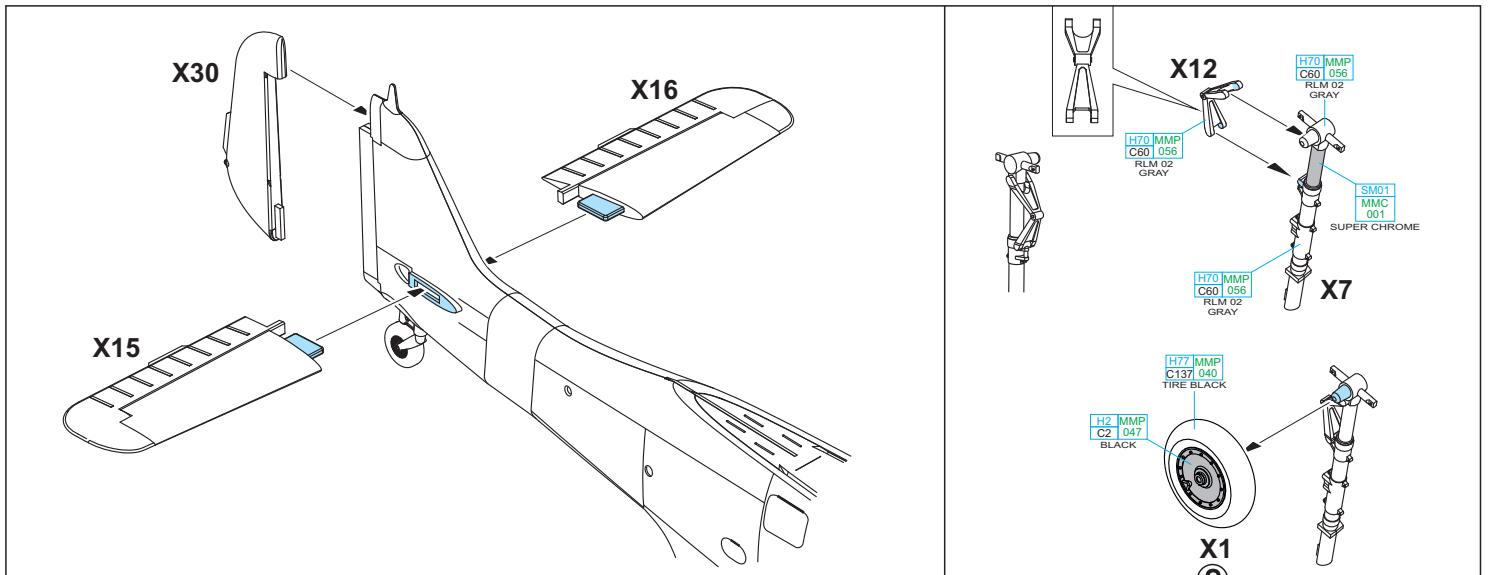
X4
H417 MMP C41 012 RED BROWN

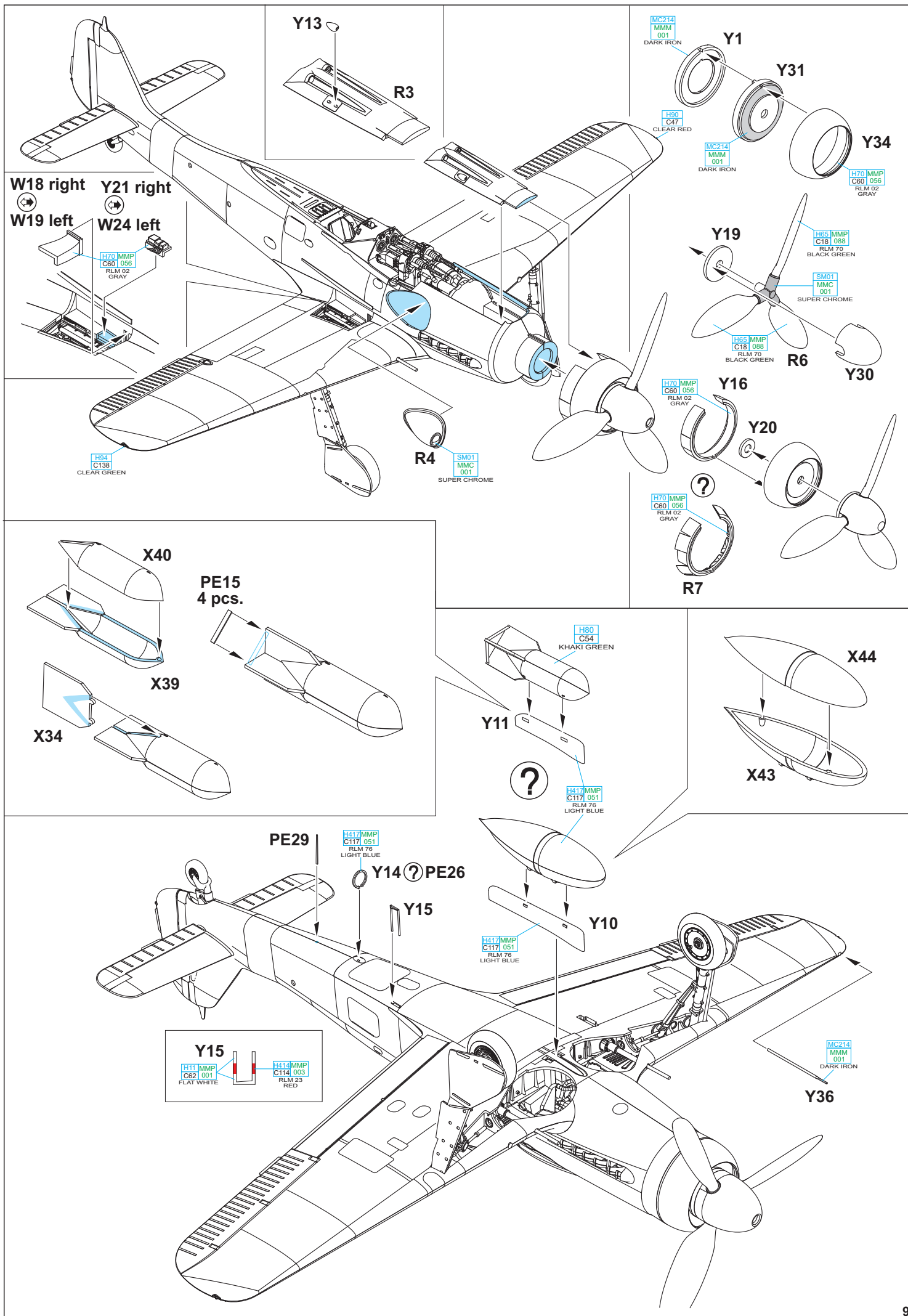


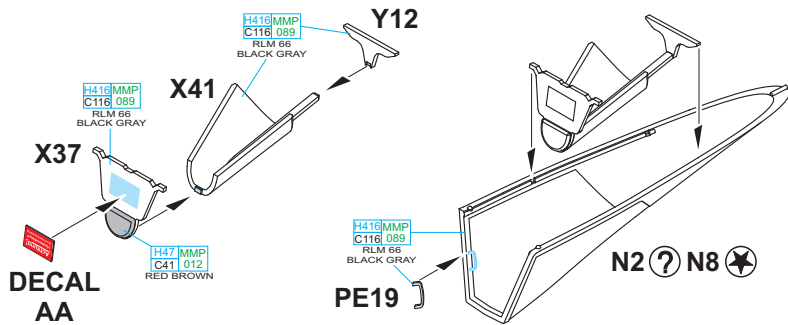
PE11

PE12



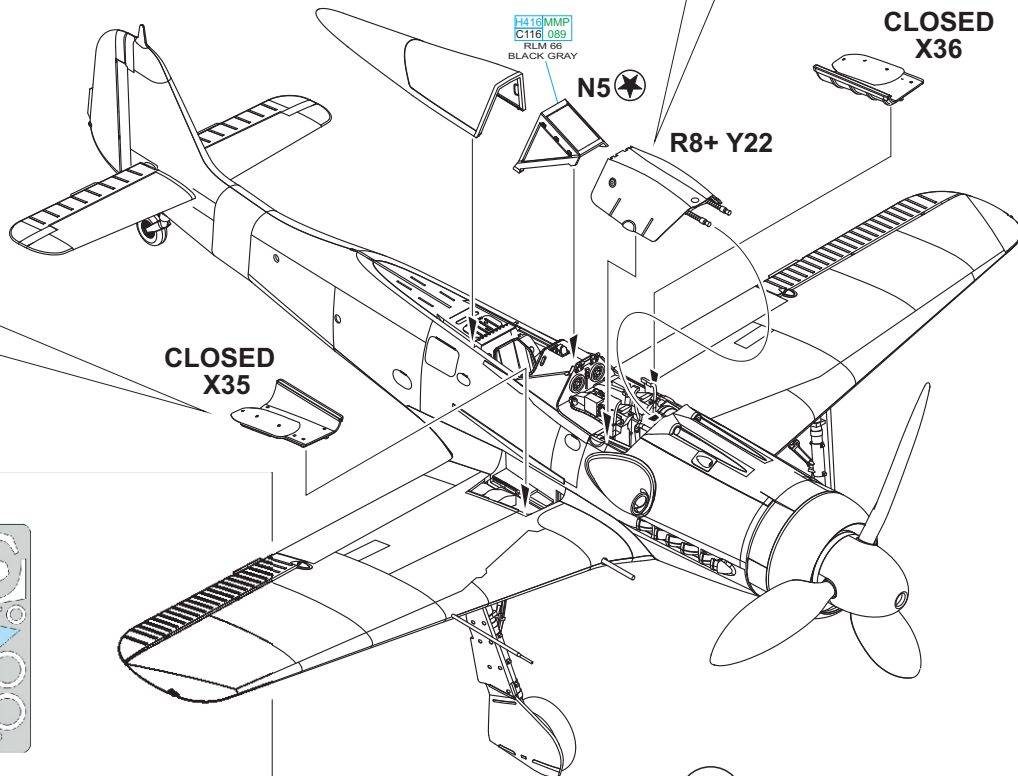
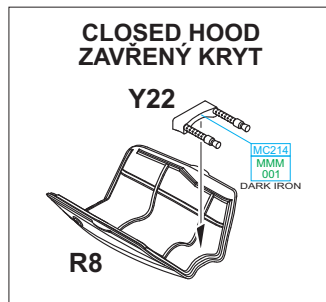




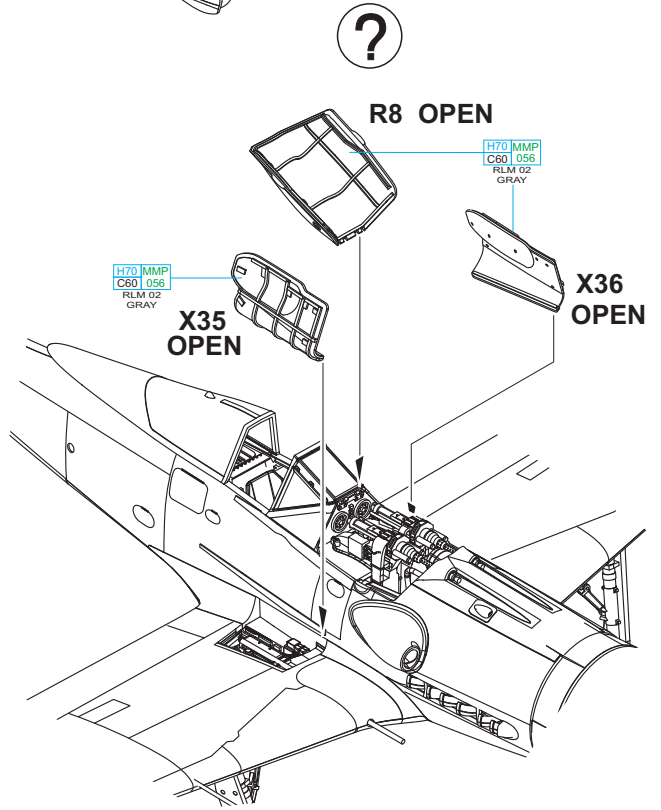
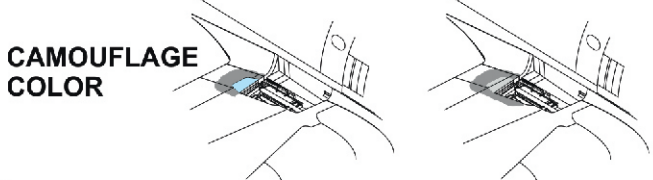
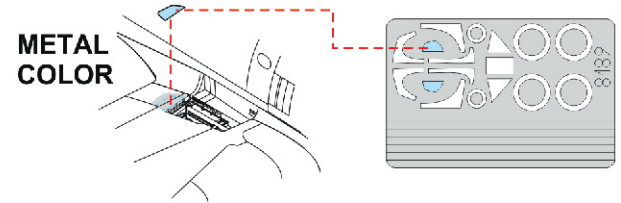
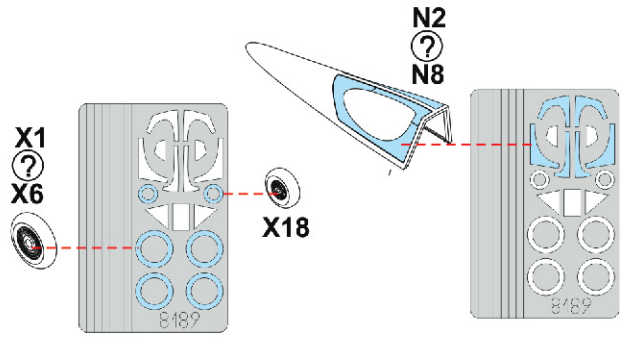
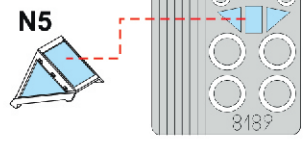


N2 - OPEN CANOPY
N8 - CLOSED CANOPY

N2 - OTEVŘENÝ KRYT KABINY
N8 - ZAVŘENÝ KRYT KABINY

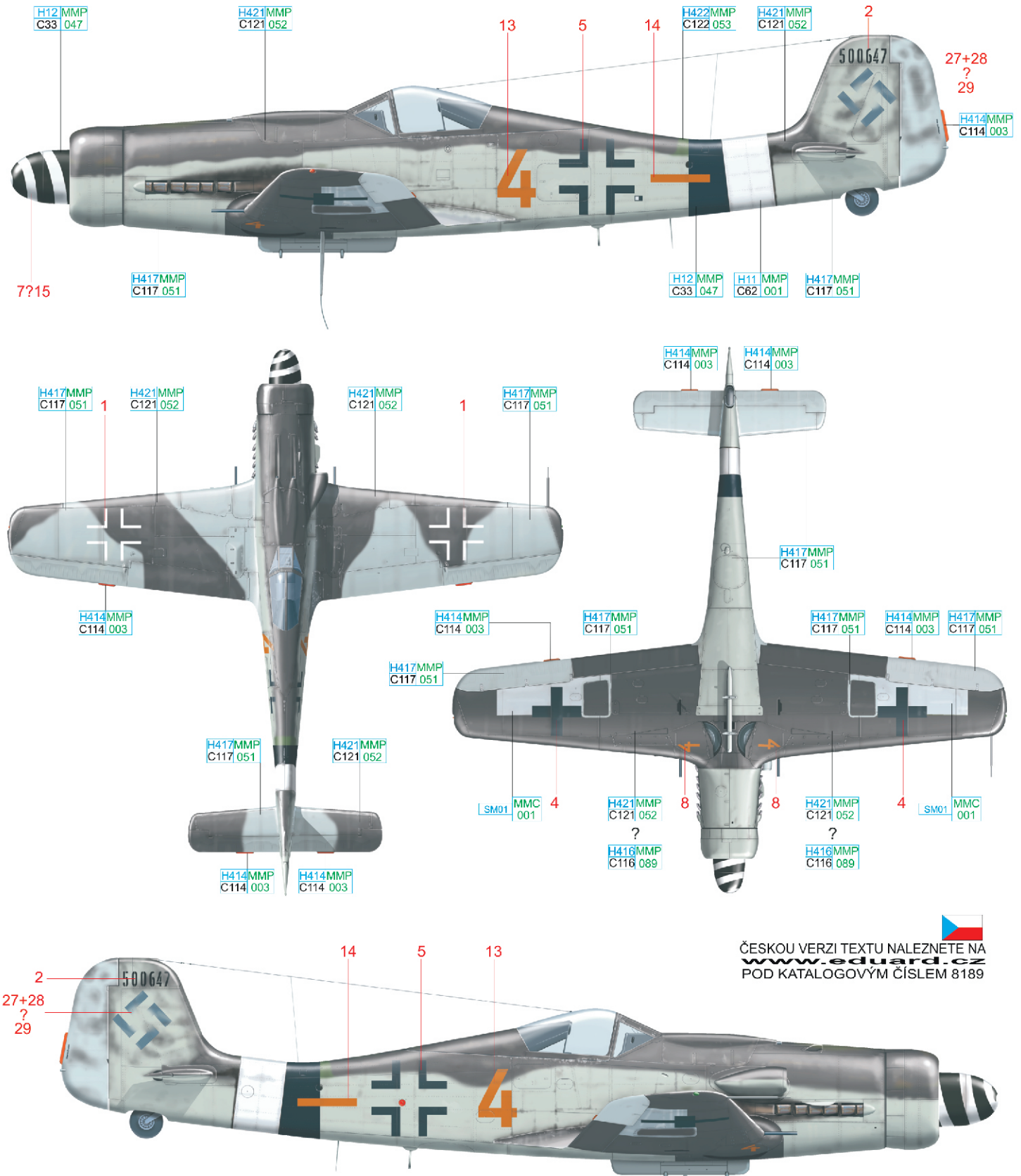


eduard MASK



A W.Nr. 500647, 7./ JG 26, Hustedt Airfield, Germany, February - April 1945

This aircraft was discovered by the allies at Hustedt near Celle, where it was abandoned by JG 26 on February 10/11th, 1945. The aircraft carries typical camouflage, in which it came out of the third and final D-9 production run at Mimetal. The upper fuselage was sprayed brown, RLM 81 (with the exception of RLM 82 applied ahead of the tail unit), while the side and bottom surfaces were painted RLM 76. The wing was sprayed by the sub-contractor in fields of RLM 81 and RLM 76. Sections of the wing bottom could have carried a spray of either RLM 81 or RLM 66.

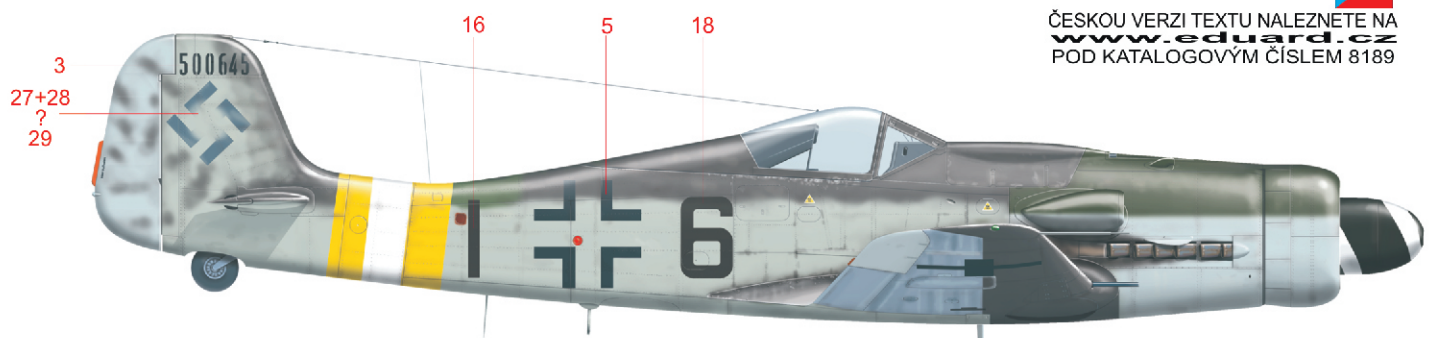
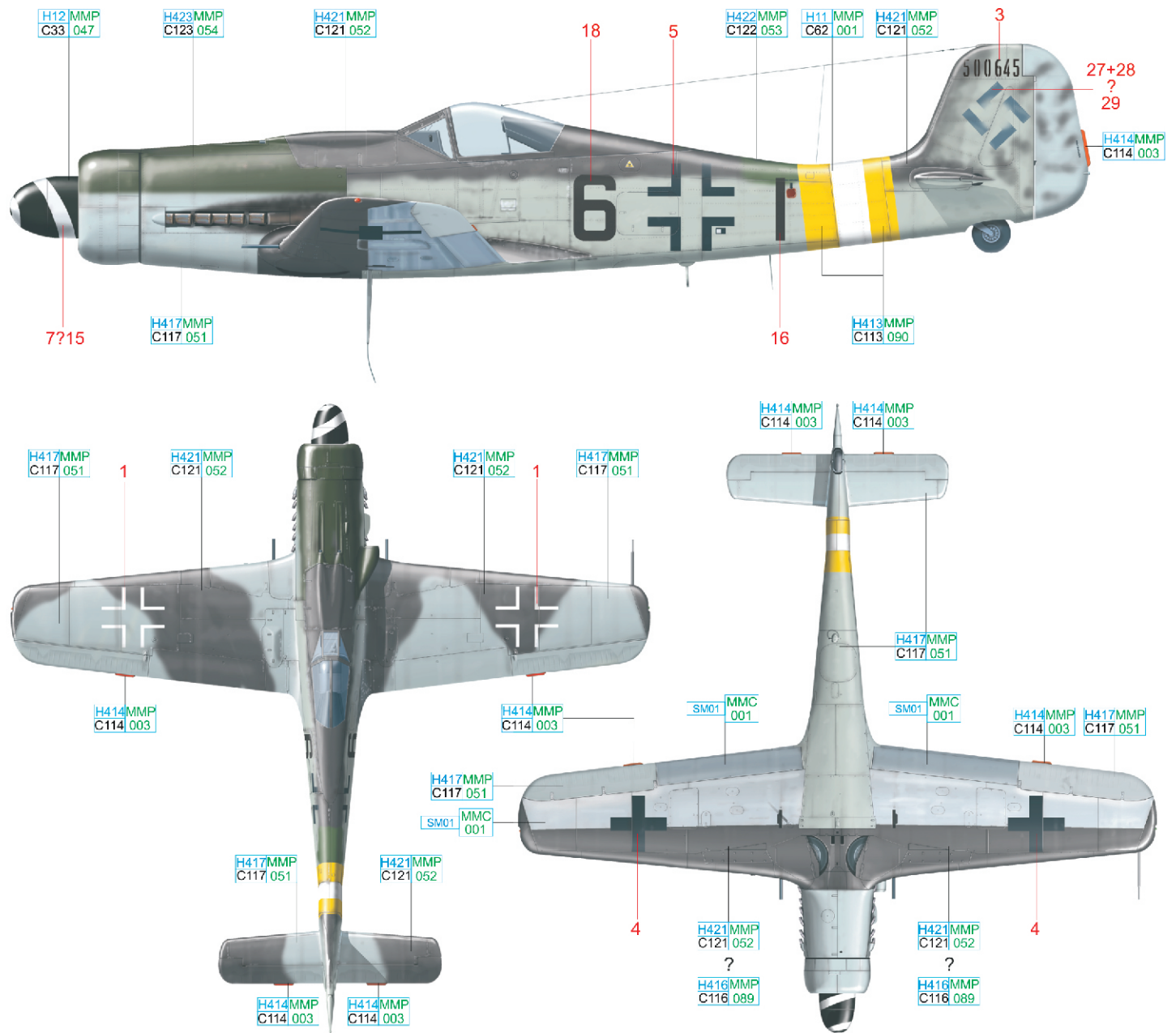


ČESKOU VERZI TEXTU NALEZNETE NA
www.eduard.cz
 POD KATALOGOVÝM ČÍSLEM 8189

WHITE	H11 MMP C62 001	BLACK	H12 MMP C33 047	RLM 23	H414 MMP C114 003	SUPER FINE SILVER	SM01 MMC 001
RLM 76	H417 MMP C117 051	RLM 81	H421 MMP C121 052	RLM 82	H422 MMP C122 053	RLM 66	H416 MMP C116 089

B W.Nr. 500645, III./ JG 2, Altenstadt, Germany, May 1945

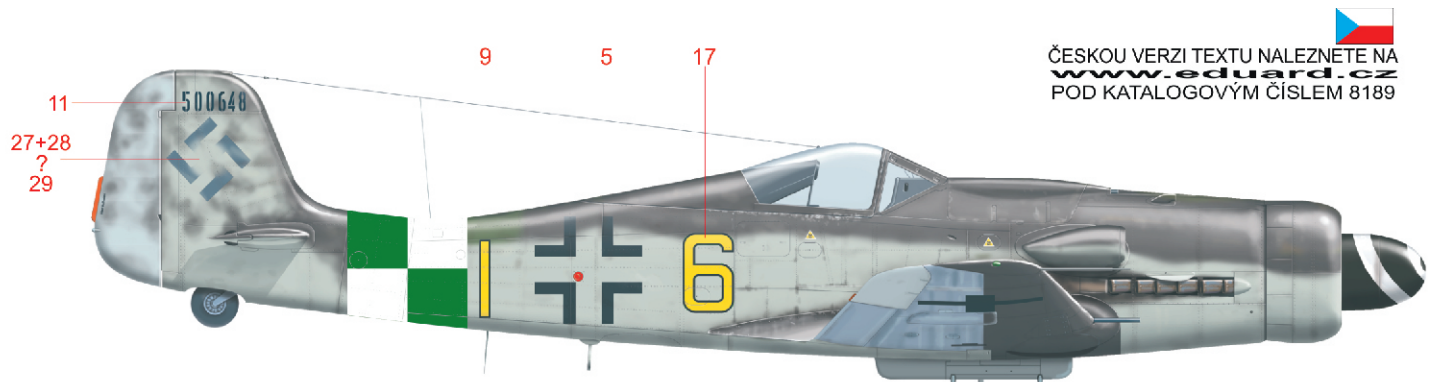
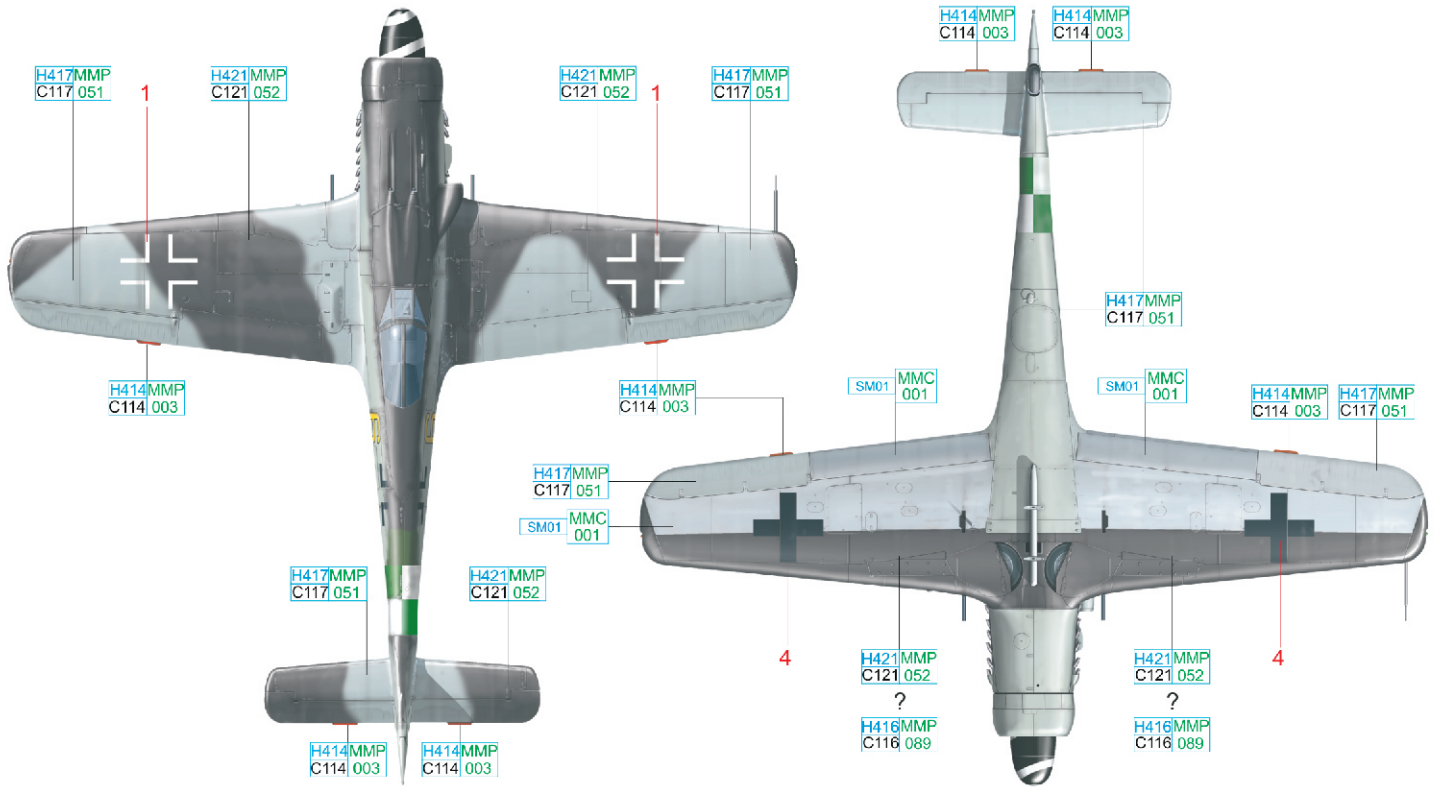
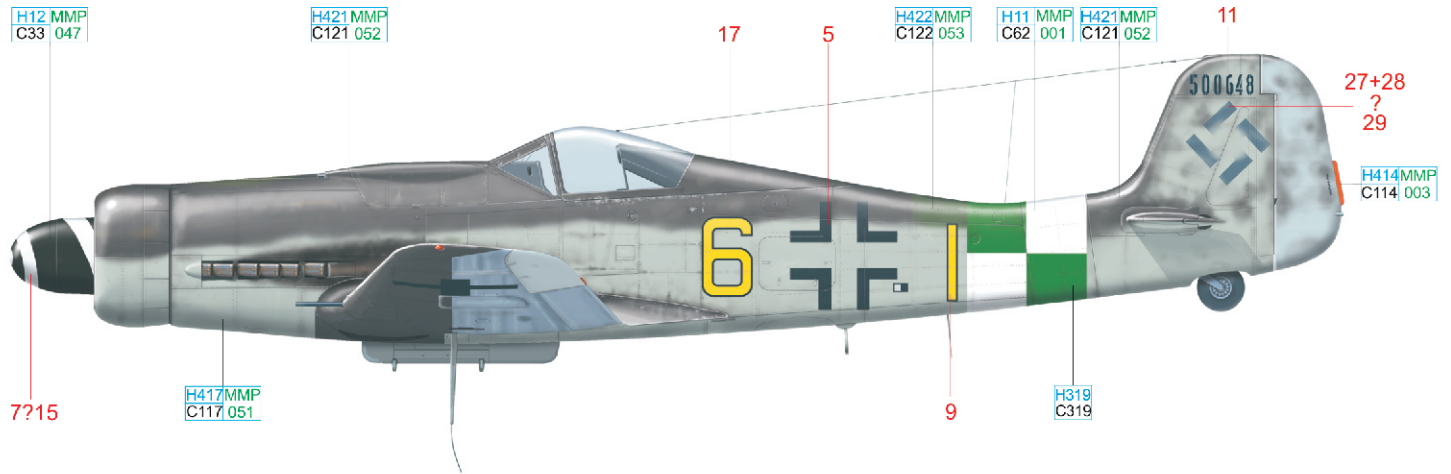
This aircraft was destroyed by fire at Altenstadt. The reconstruction of its appearance is based on a color photograph. From this source, it is evident that this machine went through an engine change. During this change, the original factory paint of 83/76, as supplied by Junkers, was not resprayed with 81, as was generally the case during assembly at Mimetal. The yellow-white-yellow bands on the fuselage were JG 2 identifiers, and the vertical stripe that of its III. Gruppe.



ČESKOU VERZI TEXTU NALEZNETE NA
www.eduard.cz
 POD KATALOGOVÝM ČÍSLEM 8189

WHITE	H11 MMP C62 001	BLACK	H12 MMP C33 047	RLM 23	H414 MMP C114 003	RLM 04	H413 MMP C113 090	SUPER FINE SILVER	SM01 MMC 001
RLM 76	H417 MMP C117 051	RLM 81	H421 MMP C121 052	RLM 82	H422 MMP C122 053	RLM 83	H423 MMP C123 054	RLM 66	H416 MMP C116 089

Yellow '6' of 9. Staffel KG(J) 27 is currently based on written records, and photographs, if any exist at all, are hidden away in private photo albums or deep in institutional archives. Based on the serial number, it is assumed that the aircraft could also have been built with the Ta 152 tail. According to documentation, the plane was lost in combat on April 1st, 1945. The reconstruction of the camouflage scheme is based on the characteristic scheme out of Mimetal and in the markings of III. Gruppe KG(J) 27. The green-white checkerboard was not carried by all aircraft of KG(J) 27, but has been documented on Fw 190A-9s of this Geschwader. KG(J) 27 was formed on November 24th, 1944 out of KG 27 Boelcke, a bomber unit. At the time, the Luftwaffe leadership, under the influence of the deteriorating war situation, decided on the conversion of bomber units to fighter ones. KG(J) 27 was stationed at airfields in southern Germany and in Austria, with III. Gruppe in Wels, Austria. After heavy losses in combat at the beginning of April 1945, the unit was officially disbanded on April 9th.

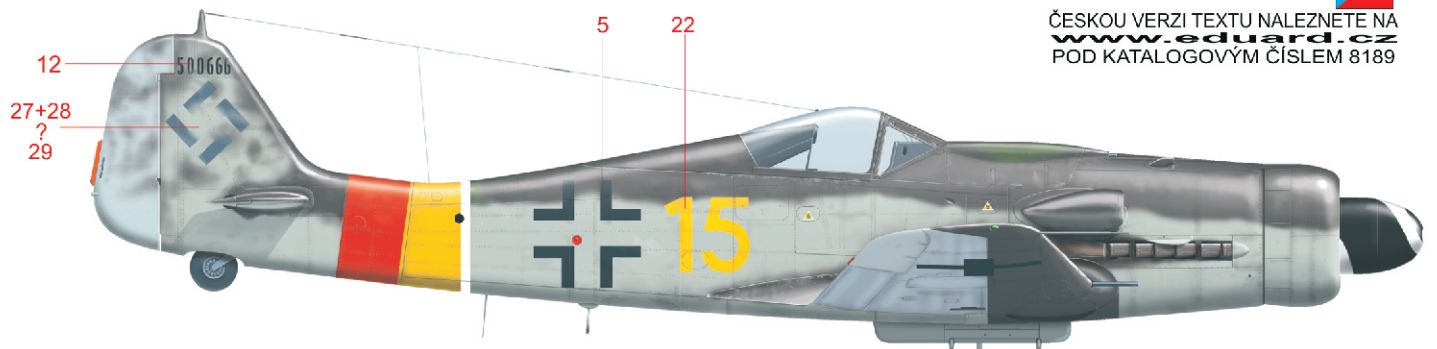
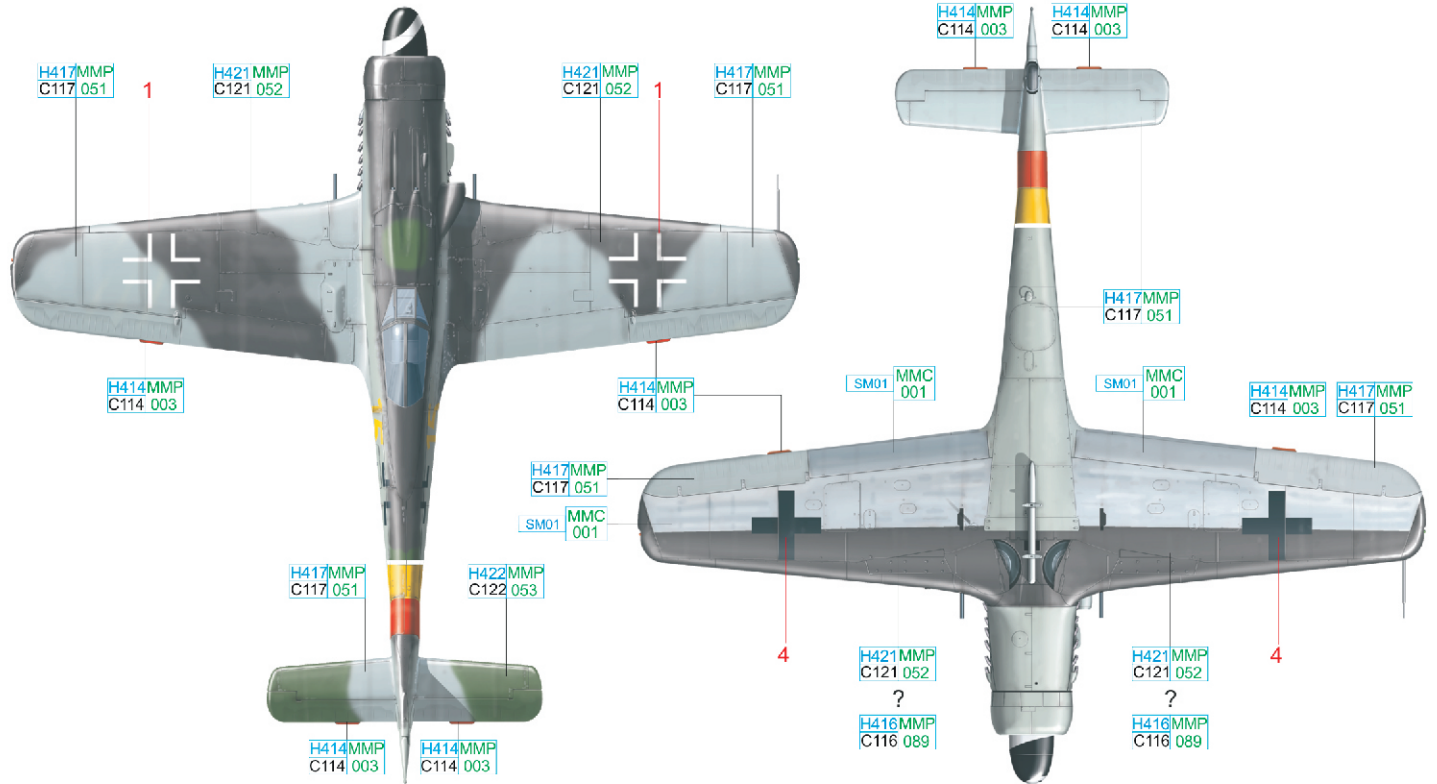
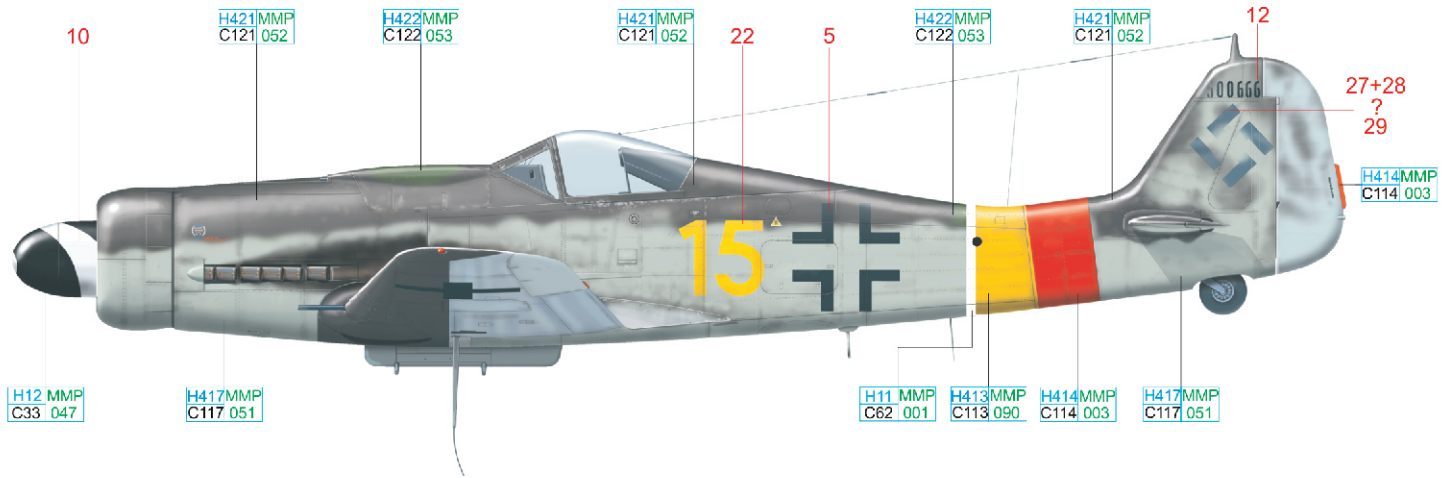


ČESKOU VERZI TEXTU NALEZNETE NA www.eduard.cz POD KATALOGOVÝM ČÍSLEM 8189

WHITE	H11 MMP C62 001	BLACK	H12 MMP C33 047	RLM 23	H414 MMP C114 003	SUPER FINE SILVER	SM01 MMC 001
RLM 76	H417 MMP C117 051	RLM 81	H421 MMP C121 052	RLM 82	H422 MMP C122 053	RLM 66	H416 MMP C116 089
		GREEN	H319 C319				

D W.Nr. 500666, II./ JG 301, Erfurt – Nord Airfield, Germany, May 1945

This aircraft was found at the end of the war at Erfurt. Apparently, it got to this airfield by way of an emergency landing. II. Gruppe JG 301 was based over the last few months of the war at Stendal (from February 19th, 1945) and Neustadt - Gleve (from April 10th, 1945). The yellow number puts it with 9. Staffel. The yellow and red fuselage band signifies JG 301. This aircraft also comes from the third production block from Mimetal, and carries typical colors.

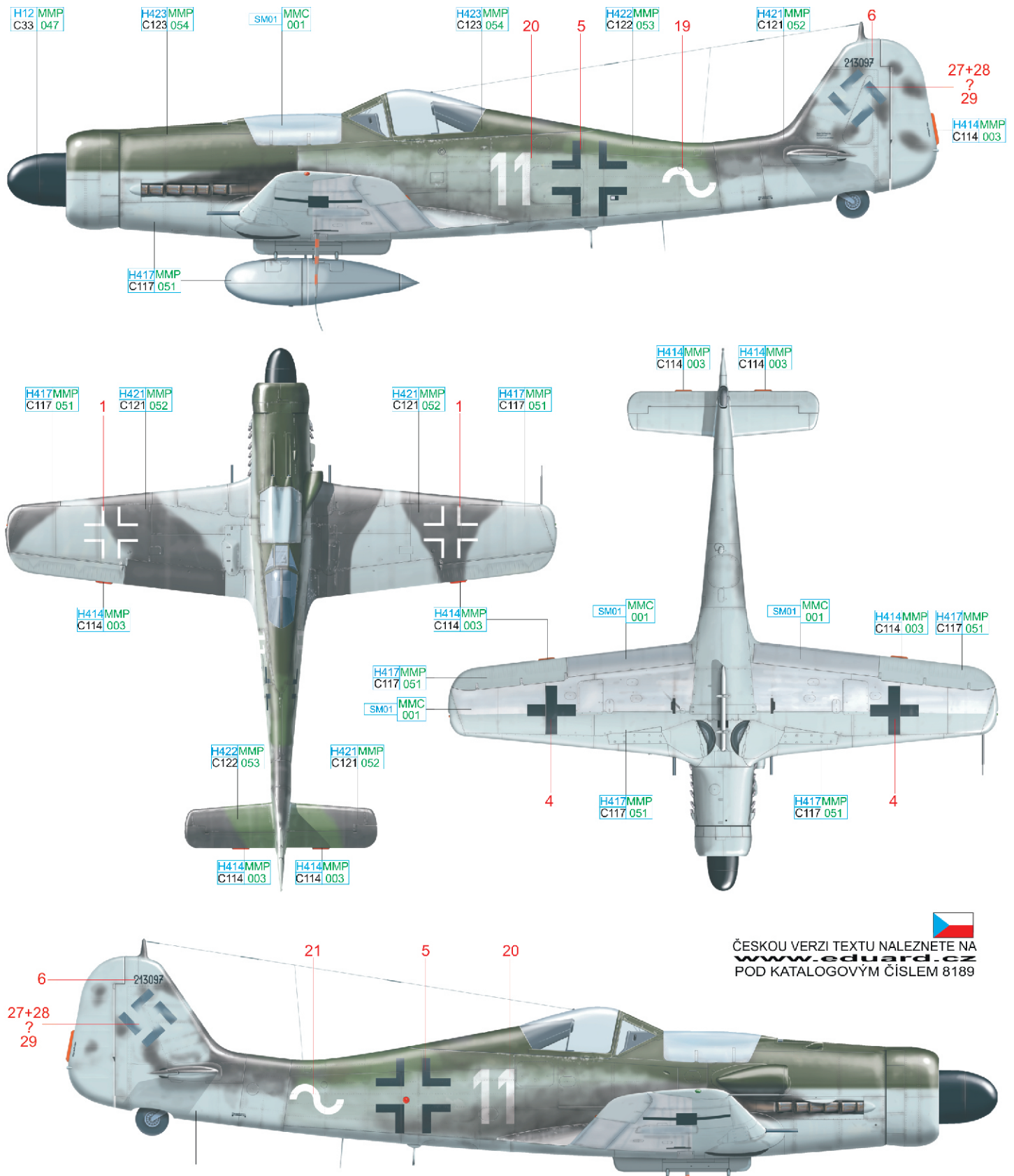


ČESKOU VERZI TEXTU NALEZNETE NA
www.eduard.cz
 POD KATALOGOVÝM ČÍSLEM 8189

BLACK	H12 MMP C33 047	RLM 23	H414MMP C114 003	RLM 04	H413MMP C113 090	WHITE	H11 MMP C62 001
RLM 76	H417MMP C117 051	RLM 81	H421MMP C121 052	RLM 82	H422MMP C122 053	RLM 66	H416MMP C116 089
				SUPER FINE SILVER	SM01 MMC 001		

E W.Nr. 213097, 10. or 13./ JG 51, Flensburg Airfield, Germany, May 1945

At the end of the war, German military elements attempted to surrender to the British or American forces, which was naturally preferred to capture by the Red Army. With this in mind, there was a lot of movement of air units, including the relocation of IV. Gruppe JG 51 from Redlin to Flensburg over the 3rd or 4th of May 1945. Part of the move included White '11'. Dora White '11' was built in March 1945, as part of the final production block of the D-9, that was built by Focke-Wulf, apparently in Cottbus. The aircraft carries typical camouflage consisting of greens RLM 83 and 82 on the fuselage. The white wave at the rear places this aircraft with IV. Gruppe. Note the replacement hood over the fuselage guns, which was unpainted and left in natural metal.



ČESKOU VERZI TEXTU NALEZNETE NA
www.eduard.cz
 POD KATALOGOVÝM ČÍSLEM 8189

BLACK	H12 MMP C33 047	RLM 23	H414 MMP C114 003	SUPER FINE SILVER	SM01 MMC 001
RLM 76	H417 MMP C117 051	RLM 81	H421 MMP C121 052	RLM 82	H422 MMP C122 053
				RLM 83	H423 MMP C123 054

