

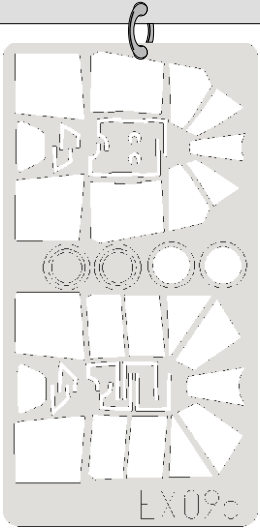
eduard
MASK

J2M Raiden 1/48

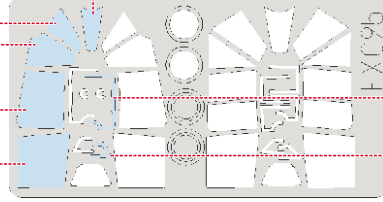
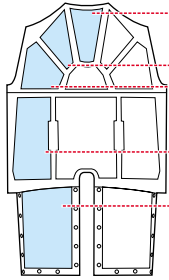
The die-cut mask for accurate canopy frame painting of the
Hasegawa scale 1/48 KIT

EX 095

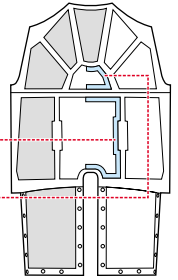
Q 1 (J2M3)



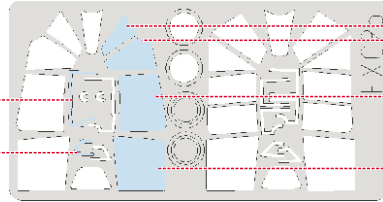
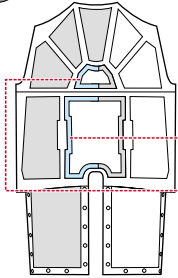
1.)



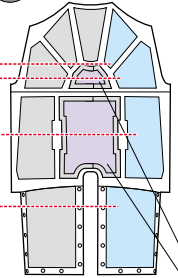
2.)



3.)



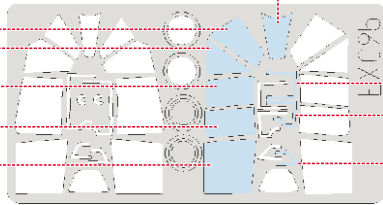
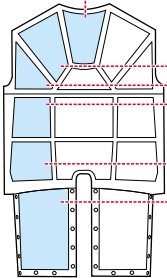
4.)



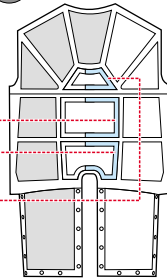
LIQUID MASK

R 1 (J2M6)

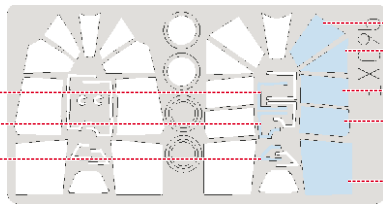
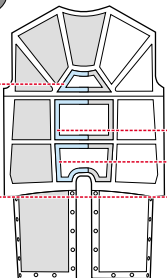
1.)



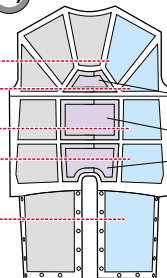
2.)



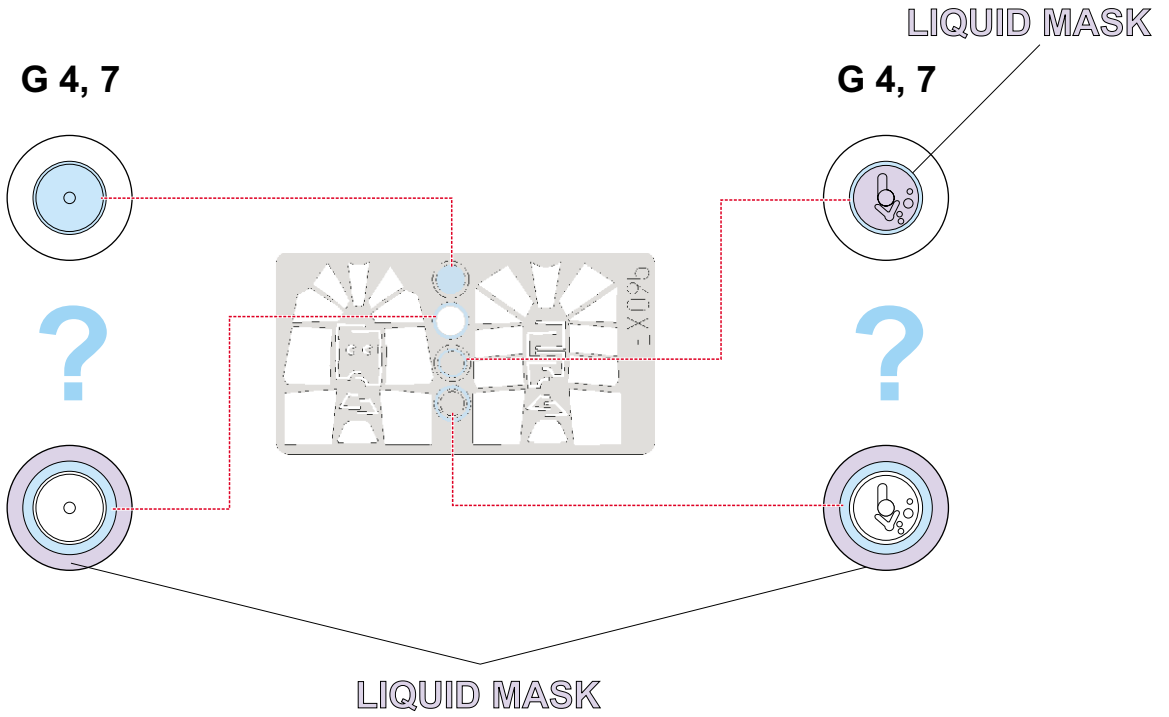
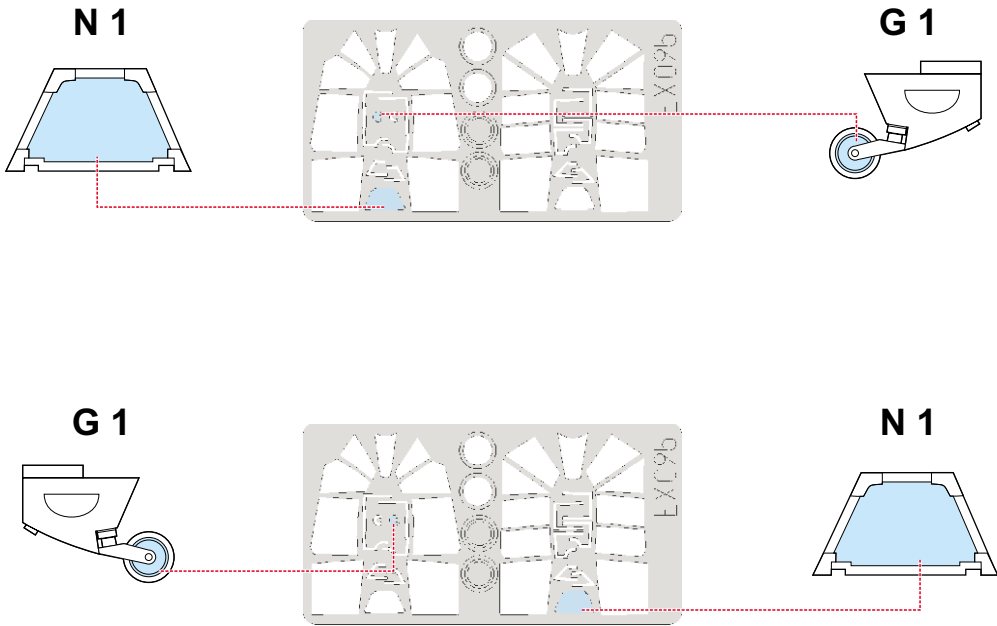
3.)



4.)



LIQUID MASK



REFERENCES: Maru Mechanic # 43 - J2M Raiden
 Bunrin-do, FAOW # 61 - J2M Raiden
 Model Art # 470 - J2M Raiden